

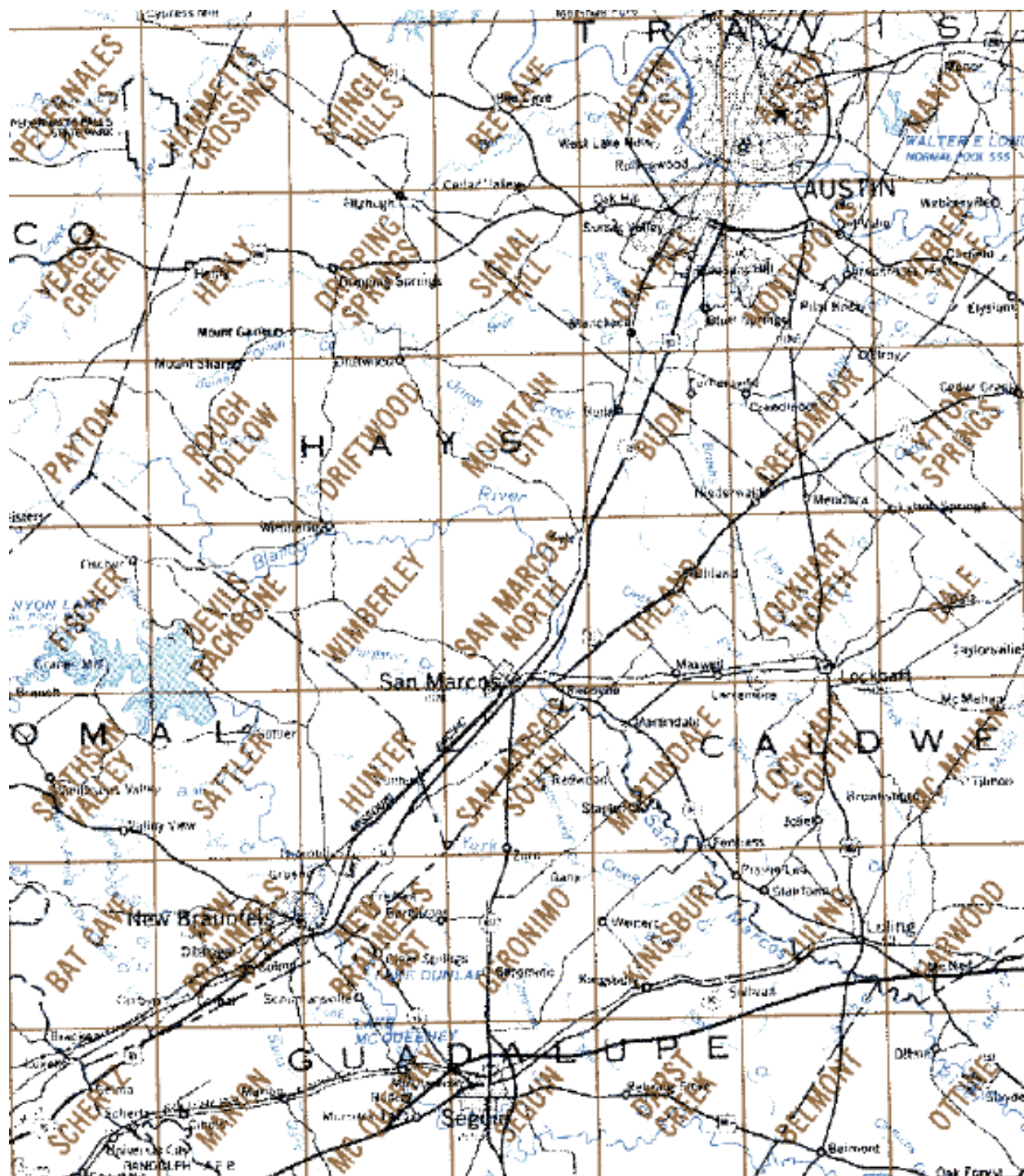
March 28, 2017

# **M E M O R A N D U M**

To: Brian Hunt  
From: Tom Grimshaw  
Subject: Google Earth Images for Areas of USGS Quadrangles between Austin and San Antonio

1958 Photos

Attachment A.  
TBD



Attachment B.  
TBD

Henly

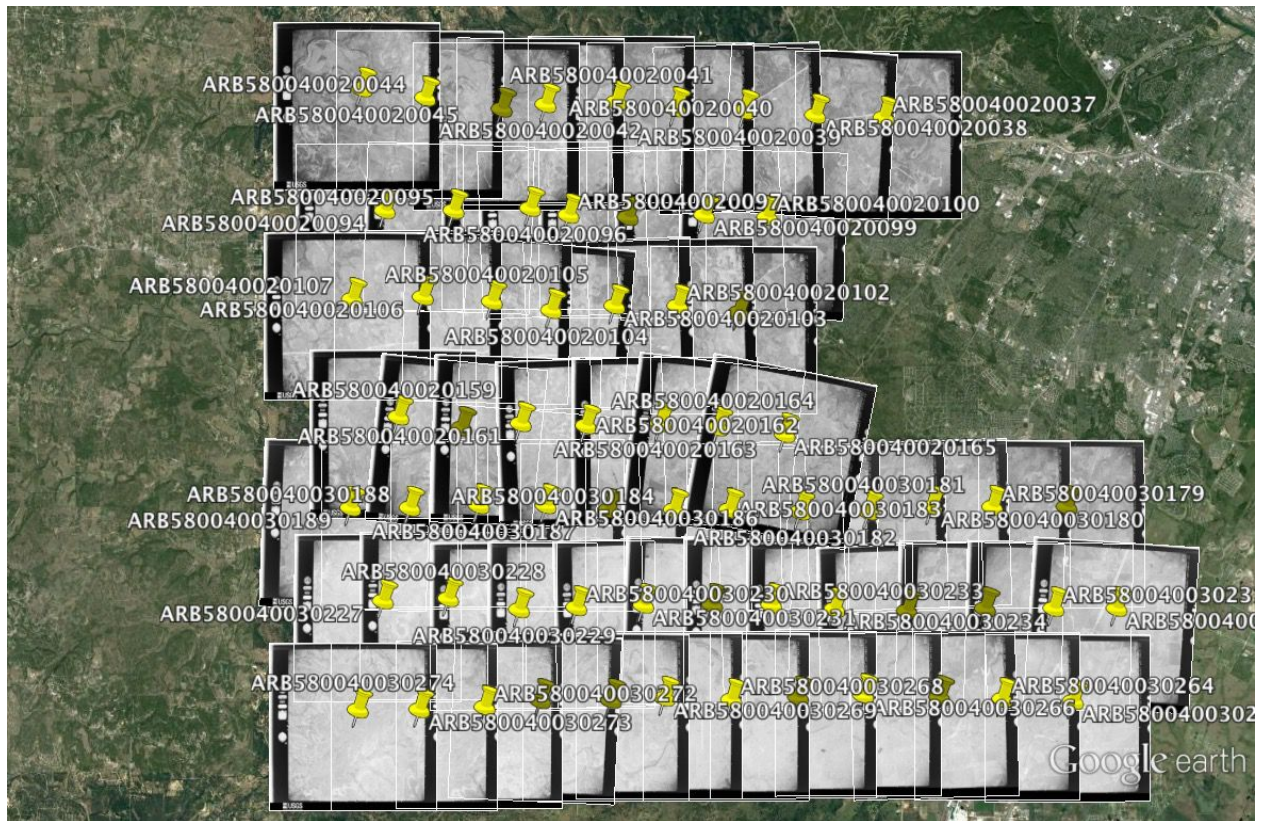




## Dripping Springs

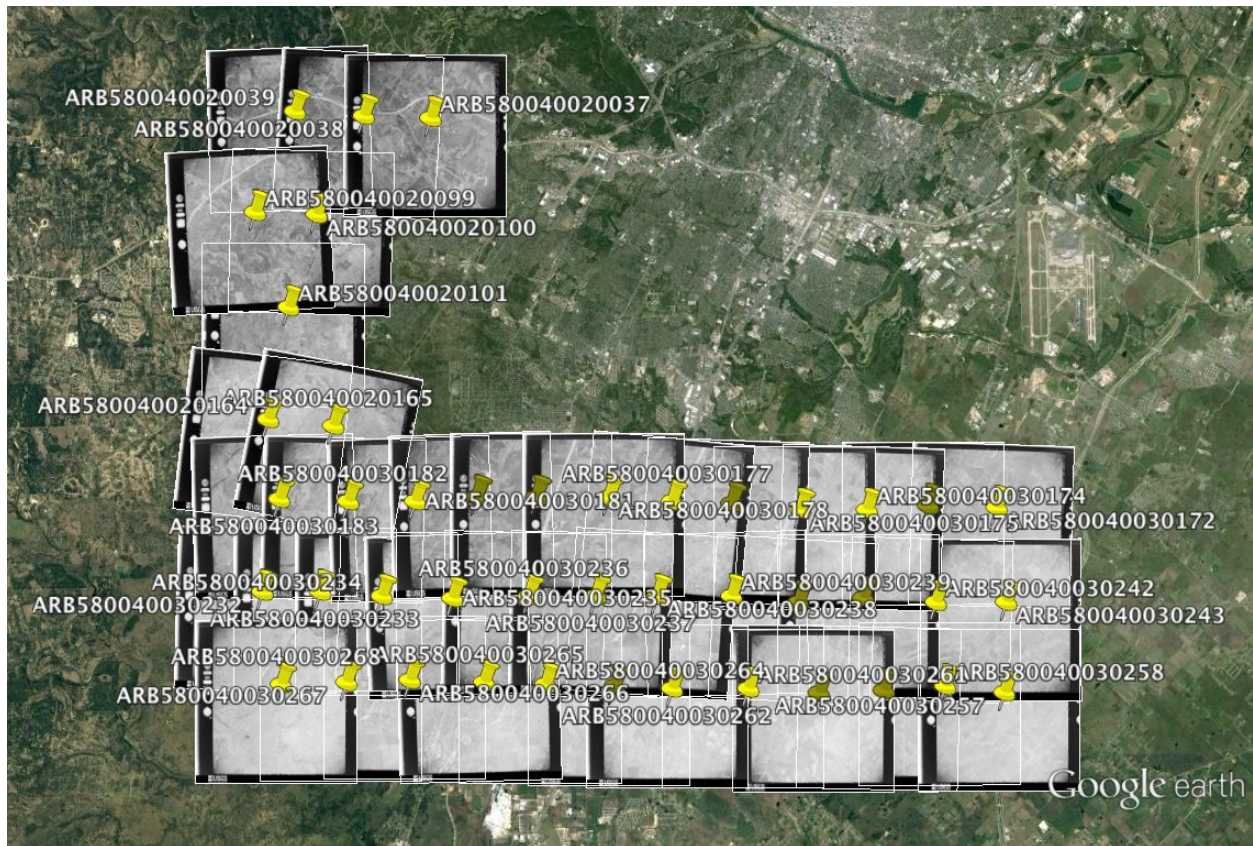


## Signal Hill

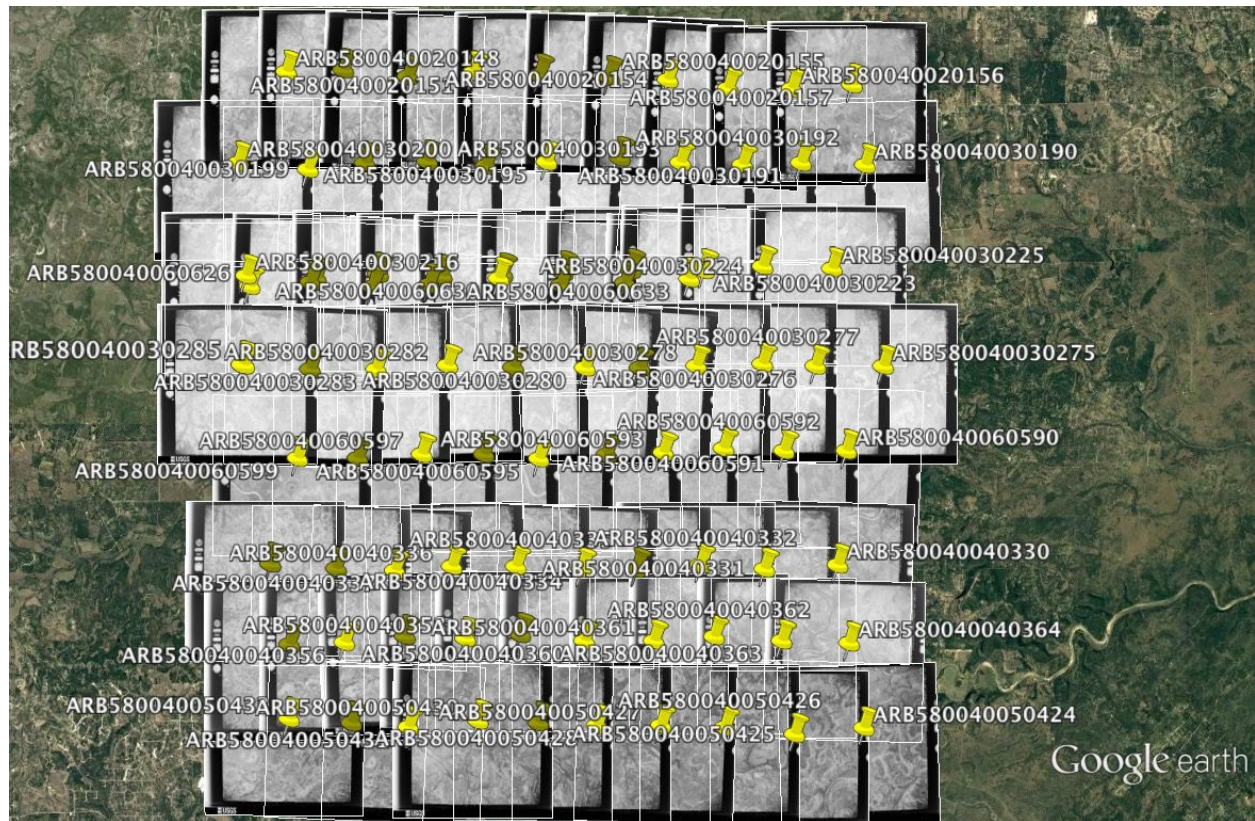




## Oak Hill

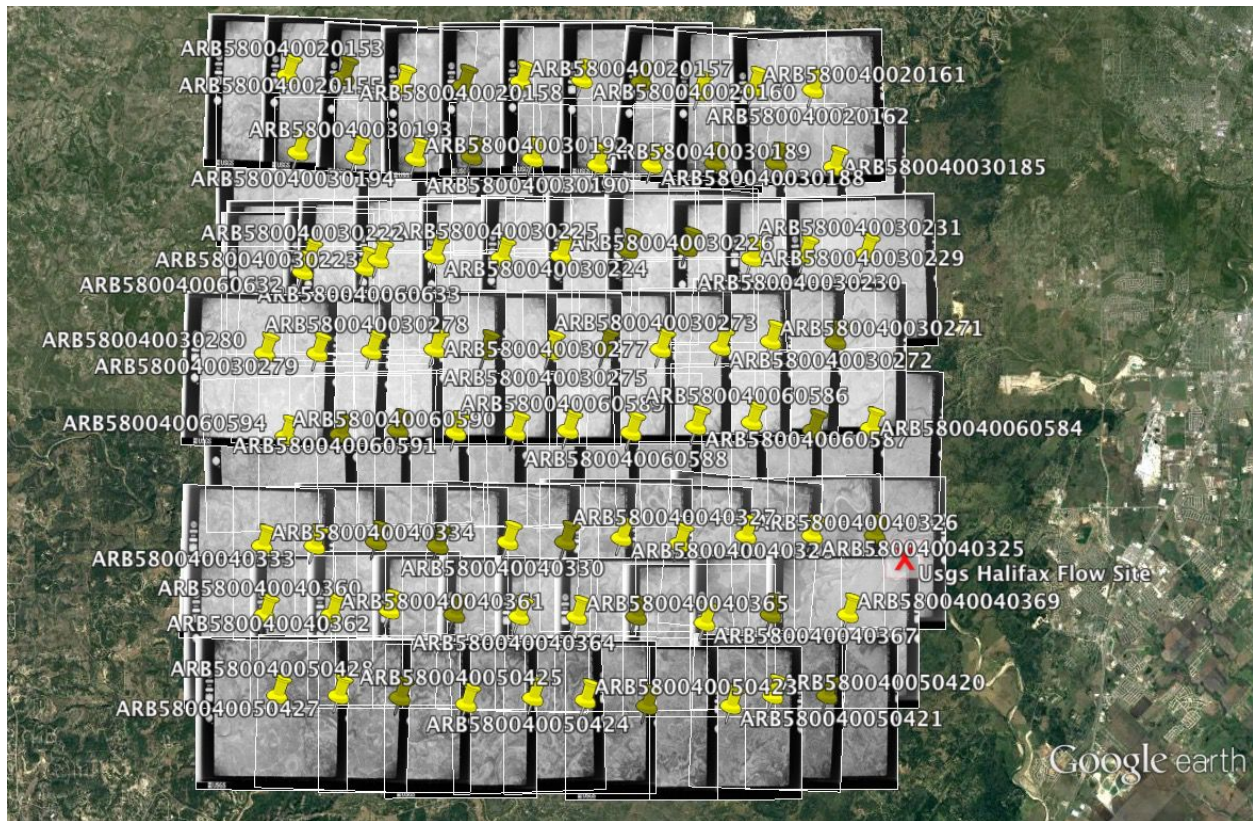


## Rough Hollow





## Driftwood





## Mountain City

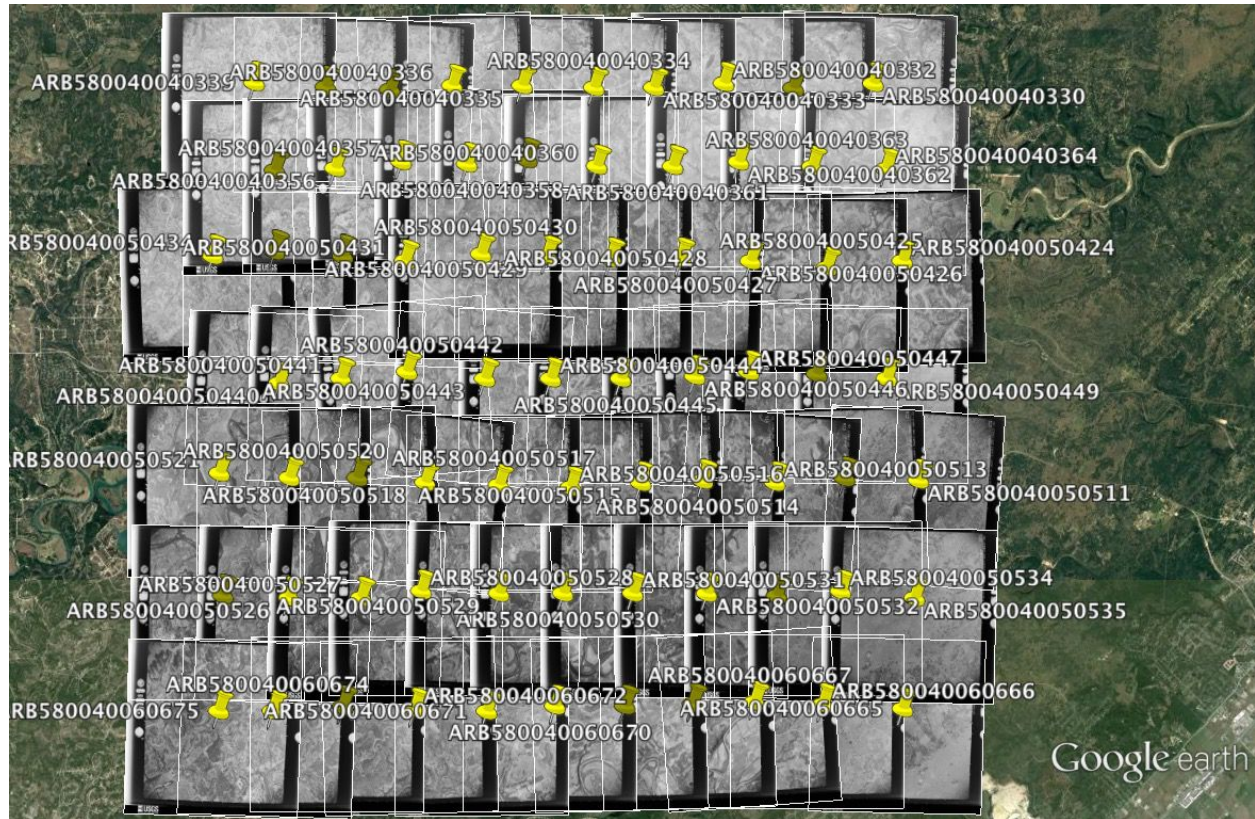


Buda

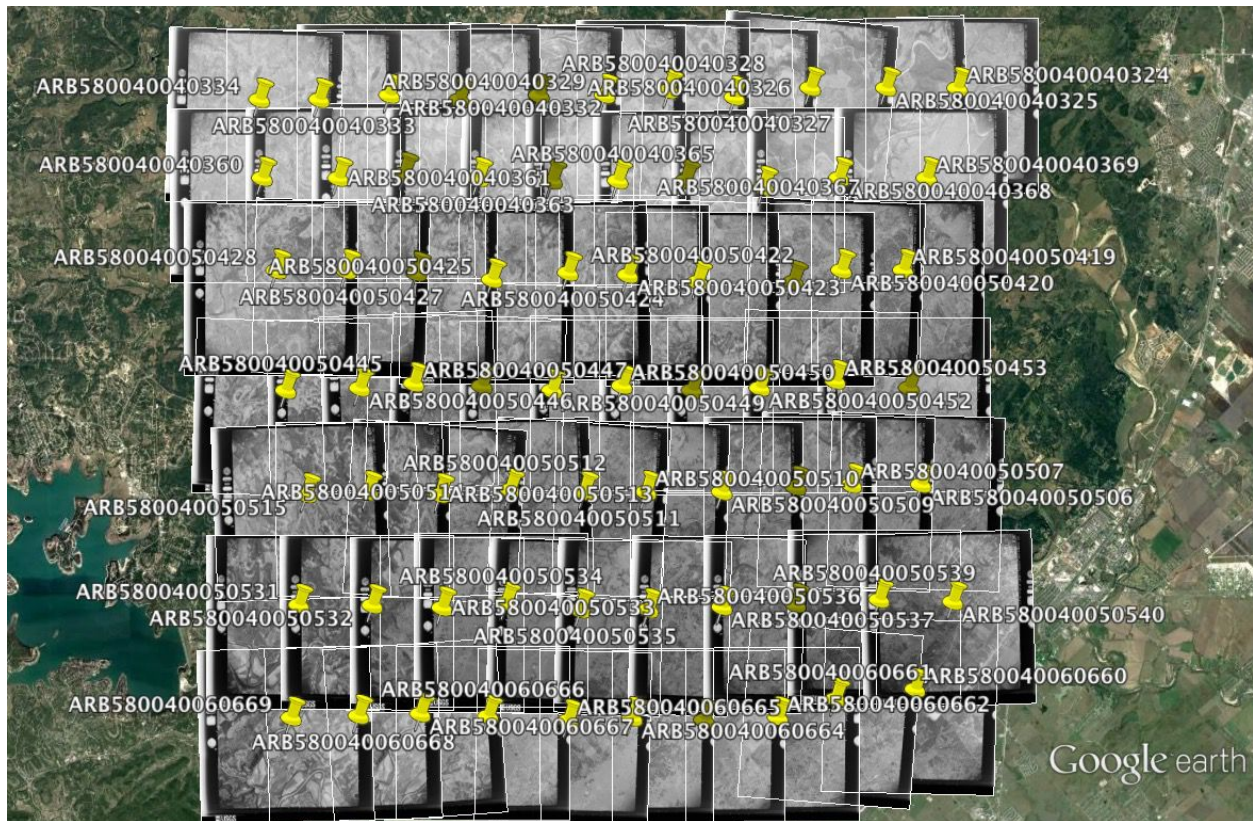




## Devils Backbone

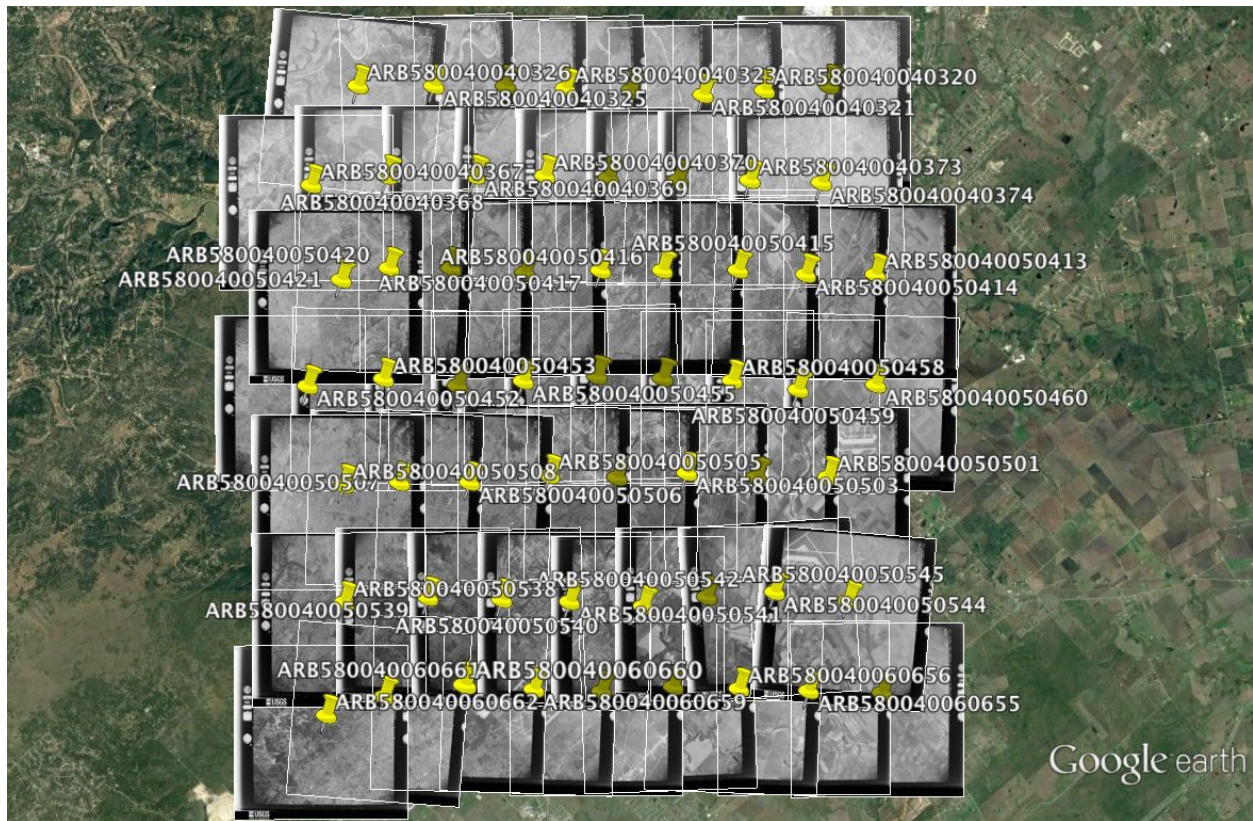


## Wimberley





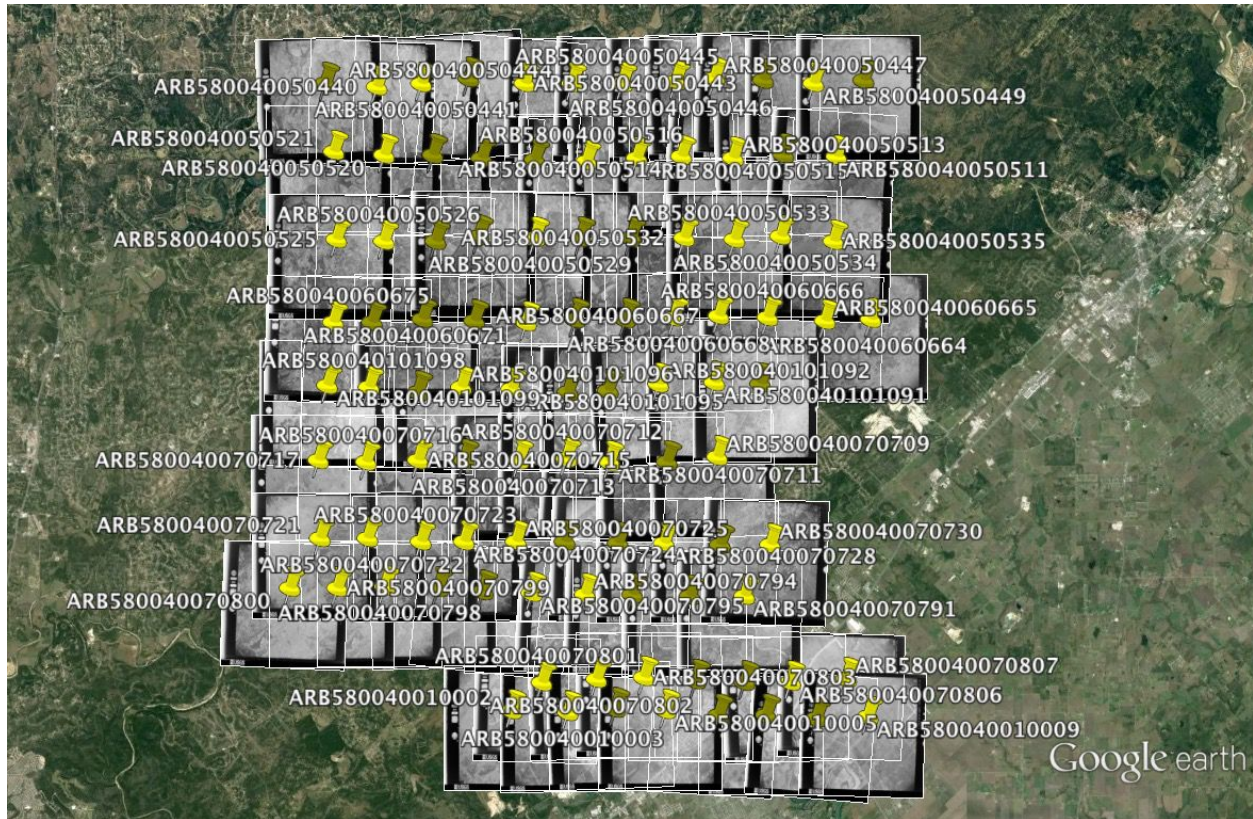
## San Marcos North



Uhland (Not Available)



Sattler



ARB580040070712 ARB580040070711 ARB580040070706 ARB580040070702  
ARB580040070709 ARB580040070707 ARB580040070701  
ARB580040070708  
ARB580040070730 ARB580040070732 ARB580040070737  
ARB580040070726 ARB580040070728 ARB580040070731 ARB580040070736  
ARB580040070727 ARB580040070792 ARB580040070785  
ARB580040070794 ARB580040070793 ARB580040070788 ARB580040070784  
ARB580040070789  
ARB580040070802 ARB580040070803 ARB580040070807 ARB580040070812  
ARB580040010004 ARB580040070809  
ARB580040010003 ARB58004007080 ARB580040010007  
ARB58004008083 ARB580040010005 ARB580040010006 ARB580040010010 ARB580040010014  
ARB580040080839 ARB580040080843 ARB580040080847  
ARB580040080842  
ARB580040091025 ARB580040091027 ARB580040091032 ARB580040091035  
ARB580040091026 ARB580040091029  
ARB580040091028  
ARB580040080872 ARB580040080874 ARB580040080876  
ARB580040080873 ARB580040080875 ARB580040080879  
ARB580040080934 ARB580040080932 ARB580040080928  
ARB580040080933 ARB580040080931 ARB580040080929 ARB580040080924  
ARB580040090937 ARB580040090938 ARB580040090942 ARB580040090946  
ARB580040090939 ARB580040090940 ARB580040090941 ARB580040090945

Google earth



This aerial map shows a residential development with numerous yellow pushpins marking specific locations. Each pushpin is accompanied by an ARB (Assessment Review Board) identification number. The numbers are arranged in a grid-like pattern, corresponding to the layout of the houses. The map is sourced from Google Earth, as indicated by the logo in the bottom right corner.

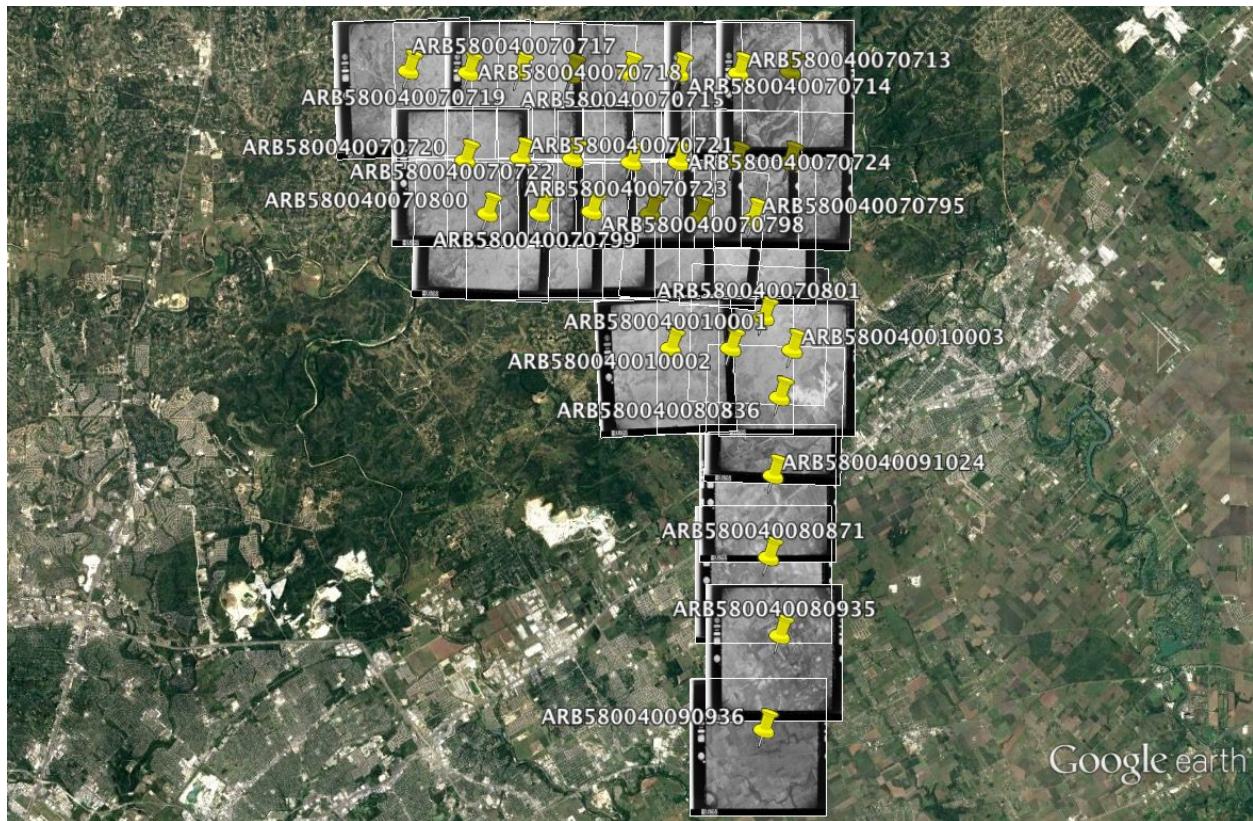
Visible ARB numbers include:

- ARB580040050452, ARB580040050455, ARB580040050459, ARB580040050461
- ARB580040050451, ARB580040050453, ARB580040050454, ARB580040050458
- ARB580040050516, ARB580040050506, ARB580040050502
- ARB580040050509, ARB580040050508, ARB580040050504, ARB580040050499
- ARB580040050536, ARB580040050540, ARB580040050544
- ARB580040050537, ARB580040050538, ARB580040050542, ARB580040050546
- ARB580040060663, ARB580040060660, ARB580040060656
- ARB580040060664, ARB580040060661, ARB580040060657, ARB580040060653
- ARB580040060662, ARB580040101084, ARB580040101080
- ARB580040101087, ARB580040101086, ARB580040101081, ARB580040101077
- ARB58004007070, ARB580040070701, ARB580040070697
- ARB580040070702, ARB580040070699, ARB580040070695
- ARB580040070700, ARB580040070696
- ARB580040070732, ARB580040070733, ARB580040070737
- ARB580040070734, ARB580040070738, ARB580040070739
- ARB580040070788, ARB580040070784, ARB580040070780
- ARB580040070787, ARB580040070783, ARB580040070779
- ARB580040070786, ARB580040070812
- ARB580040070816
- ARB580040010009, ARB580040010014, ARB580040010016
- ARB580040010015, ARB580040010017

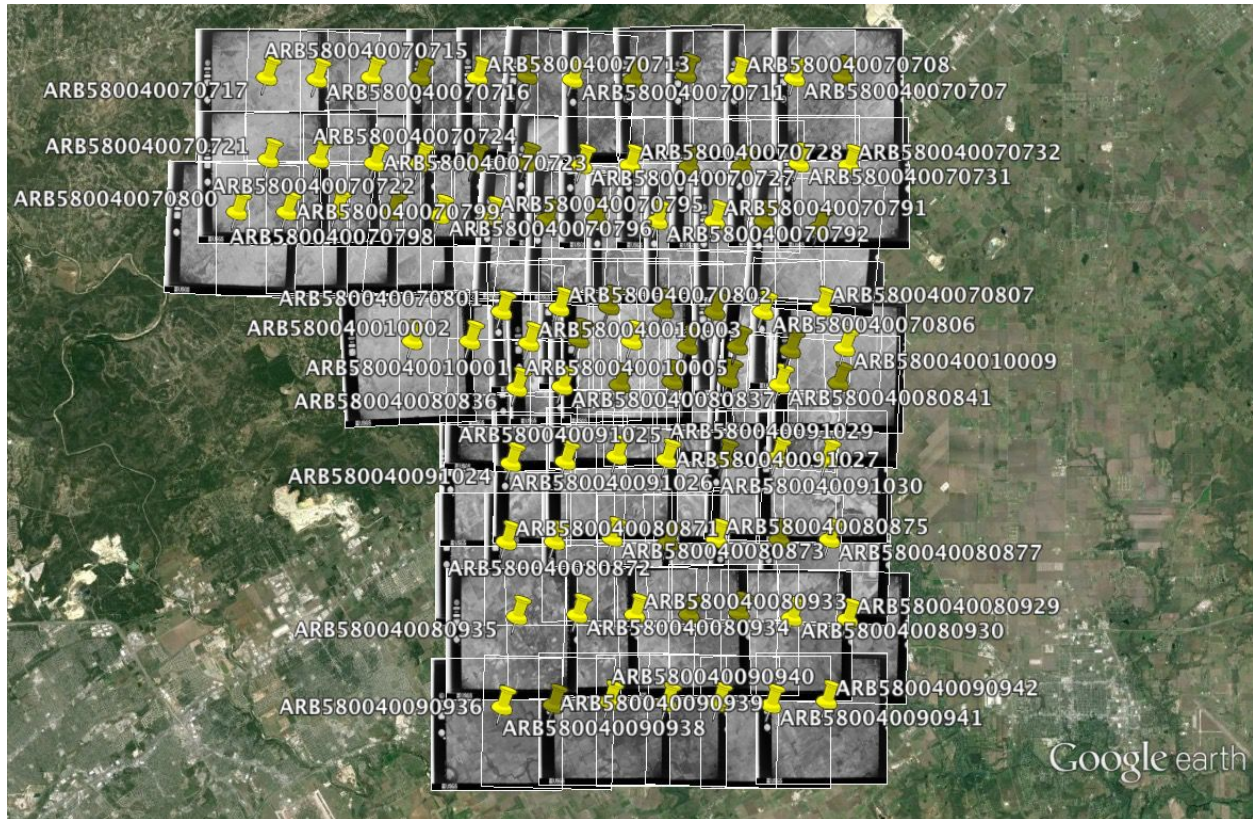
Martindale (Not Available)



## Bat Cave



## New Braunfels West





## New Braunfels East

