

August 14, 2017

MEMORANDUM

To: Brian Hunt
From: Tom Grimshaw
Subject: Proposed Geologic Field Trip to Northeast Corner of Mt City and Surrounding Quads

I look forward to our field trip to the northeast part of the Mountain City Quad this Thursday, August 17. If time permits, we may also make stops in nearby parts of the Buda and Signal Hill Quads.

The general map area is shown in a Google Map image in Attachment A. The preliminary geologic maps for the Mountain City, Buda, and Signal Quads are in Attachment B. These maps also show proposed field stops on numbered yellow circles. The 1958 air photos on which the mapping was accomplished are in Attachment C.

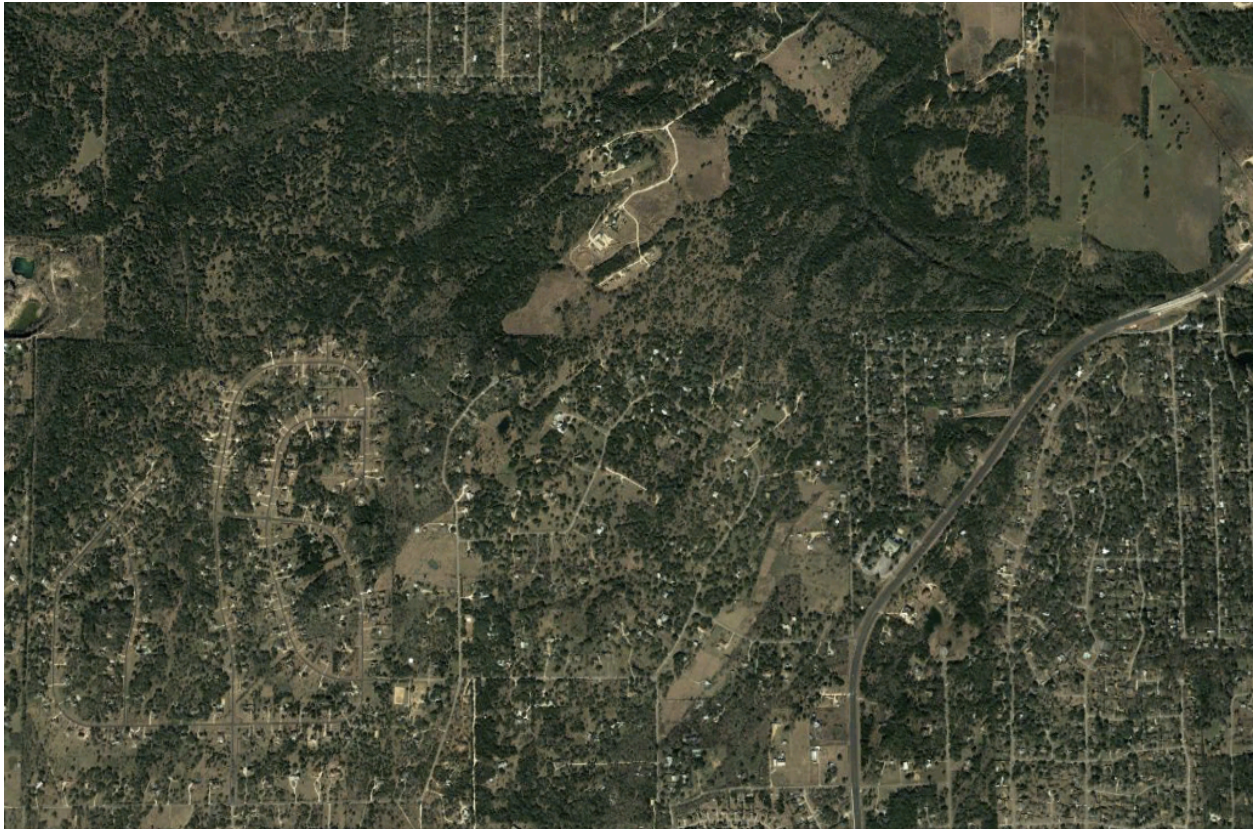
The main part of the trip will be in the Elliot Ranch gated community in the area of the “wedge graben” to check readily accessible outcrops. A few additional stops in the surrounding area may also be made if time permits. The numbered circles in Attachment B are described below.

<u>Stop</u>	<u>Description</u>
1	Confirm proposed Kdr-Kbu contact in flat area on Oak Grove Road
2	Observe outcrops of Kef on Oak Grove Road
3	Identify unknown fault block near Oak Grove Road
4	Observe Kdr-Kbu contact near fault near Oak Grove Road
5	Confirm Kdr-Kbu contact on near Little Bear Road and Elliot Ranch Road
6	Observe possible Kgt outcrop on Elliot Ranch Road
7	Confirm Kbu in fault block under Jerrys Lane
8	Observe Kdr-Kbu contact on 1826
9	Identify unknown fault block if time permits
10	Observe fault and identify subsurface units
11	Confirm Kbu near fault

Let me know if you have any questions or feedback on this proposed field trip.

Attachment A.

Google Earth Image of Area of Field Visit



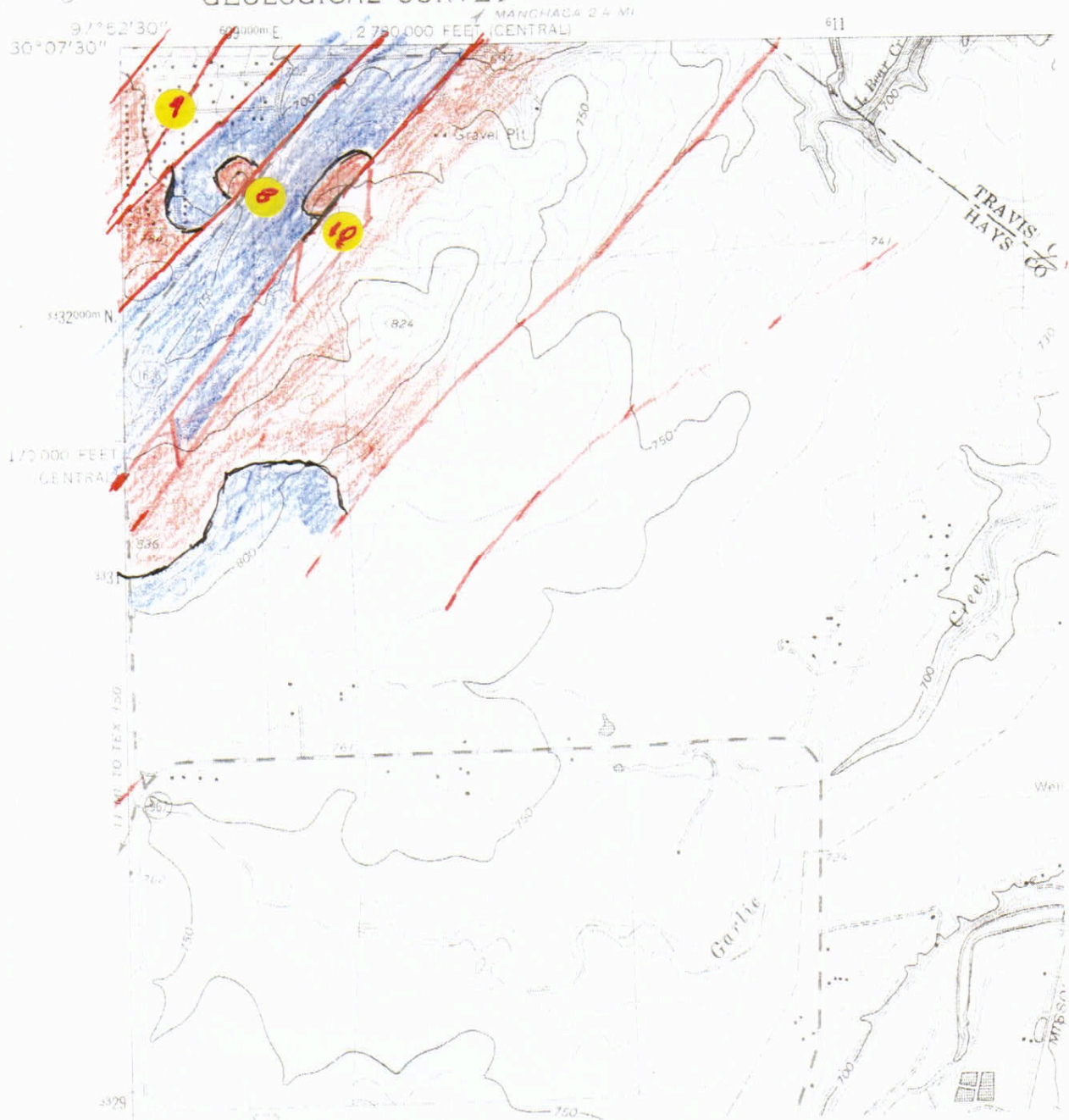
Attachment B.

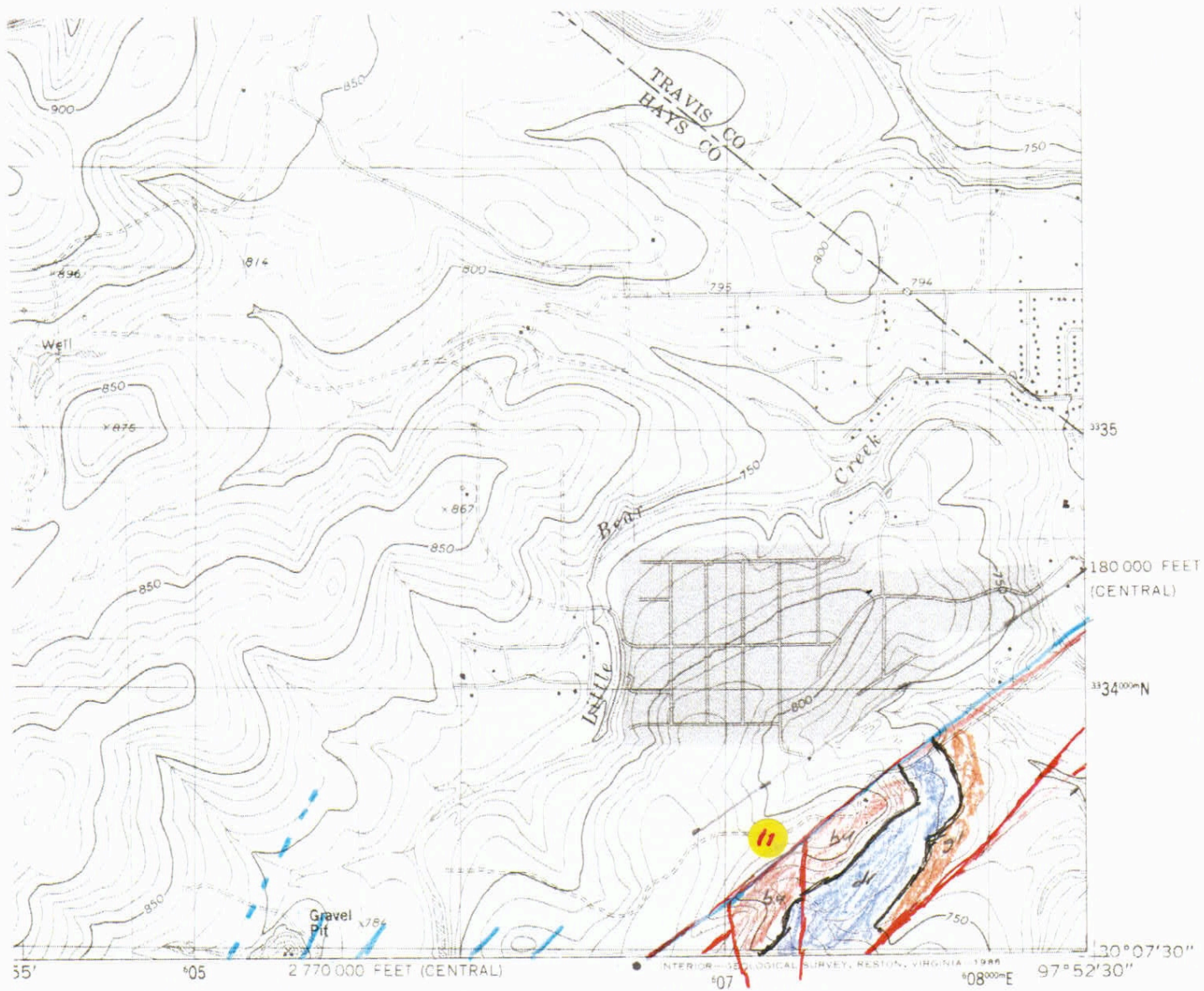
Preliminary Geologic Maps of Mountain City, Buda, and Signal Hill Quads with
Proposed Field Stops (Numbered Yellow Circles)

Buda (NW)

Signal Hill
(Signal Hill)

UNITED STATES
DEPARTMENT OF THE INTERIOR
GEOLOGICAL SURVEY



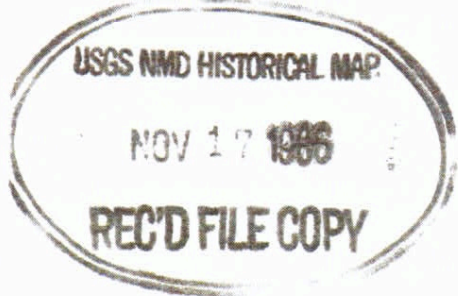


- ROAD CLASSIFICATION**
- Primary highway, hard surface
 - Secondary highway, hard surface
 - Light-duty road, hard or improved surface
 - Unimproved road
 - Interstate Route
 - U S Route
 - State Route



QUADRANGLE LOCATION

3097-223



SIGNAL HILL, TEX.

NW/4 BUDA 15' QUADRANGLE
30097-B8-TF-024

1986

DMA 6444 III NW-SERIES V882

Attachment C.

Geologic Mapping on 1958 Air Photo Stereo Pairs

215 1372MCS USAF 15APR58 1140FT AF-58-4 ROL-3

182

57004 R-3



20705

1201

9968

1201

215 1372MCS USAF 15APR58 1140FT AF-58-4 ROL 1-3

181

58004 2-3

SGS

0102
WM 96 83

215 1372MCS USAF 15APR58 11400FT AF-58-4 ROLL-3

180

58004

18-3



STUDY

6'1"

96 63

1 3 3

