

December 19, 2016

MEMORANDUM

To: Brian Hunt
From: Tom Grimshaw
Subject: Revision 2 of Geologic Map of Northern Part of Dahlstrom Ranch
Revision 2 of the Geologic Map of the Northern Part of Dahlstrom Ranch

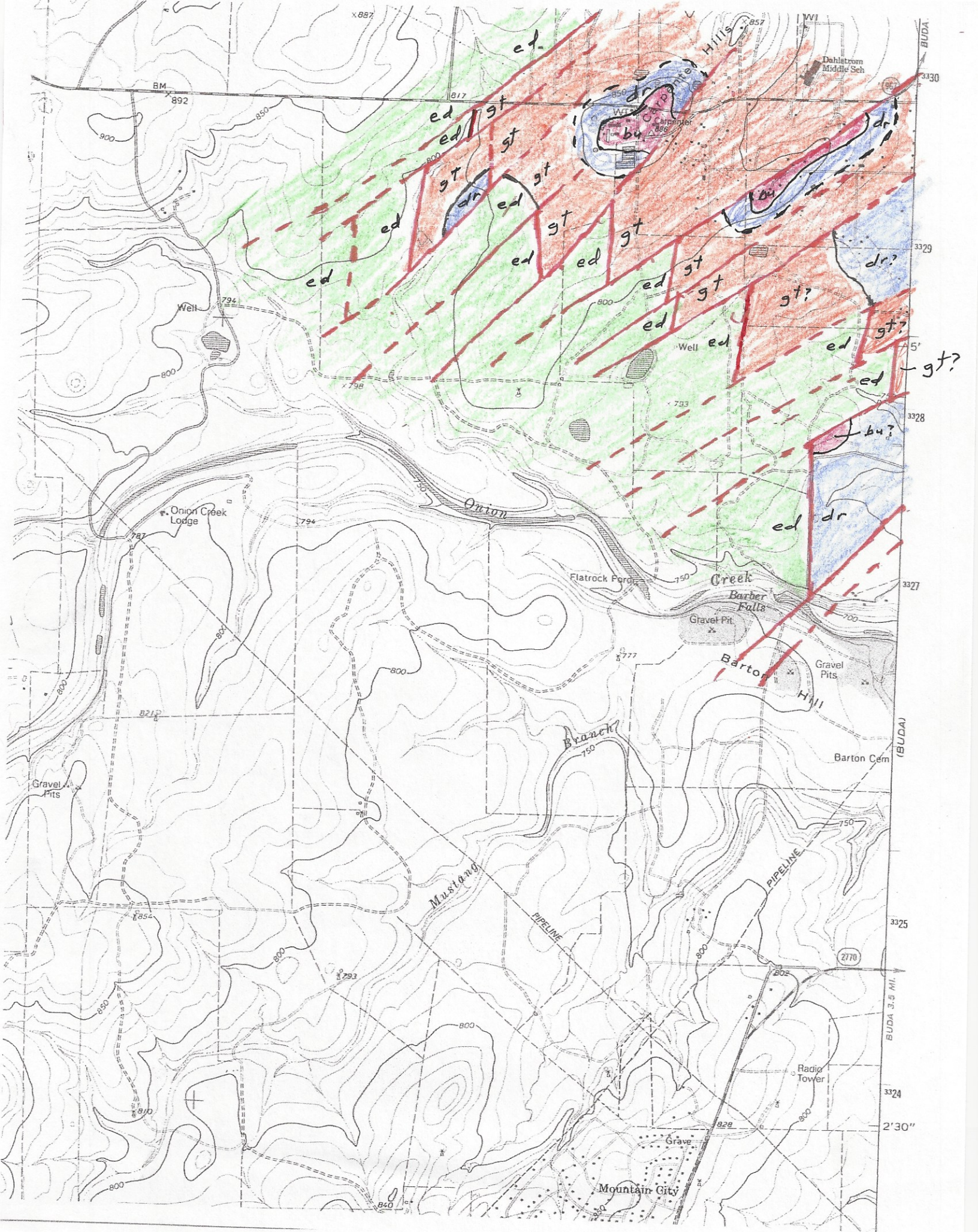
The geologic map of the northern part of the Dahlstrom Ranch (between FM 967 and Onion Creek) may be revised after our second field trip to review outcrops and other geologic features. The two field visits took place on September 16 (described in memos dated September 17 and December 4) and on December 15 (December 18 memo).

The revised geologic map is shown in Attachment A. The air photos on which the mapping was done (used with adjacent photos for stereoscopic views) are shown in Attachment B. The main change from the previous version of the map is a greater emphasis on the northeast trending faults and on north trending crossfaults.

I look forward to your feedback on this map and to continuing our mapping of the Mountain City Quadrangle.

Attachment A.

Geologic Map of the Northern Part of the Dahlstrom Ranch
Mountain City Quadrangle: Revision 2



Attachment B.

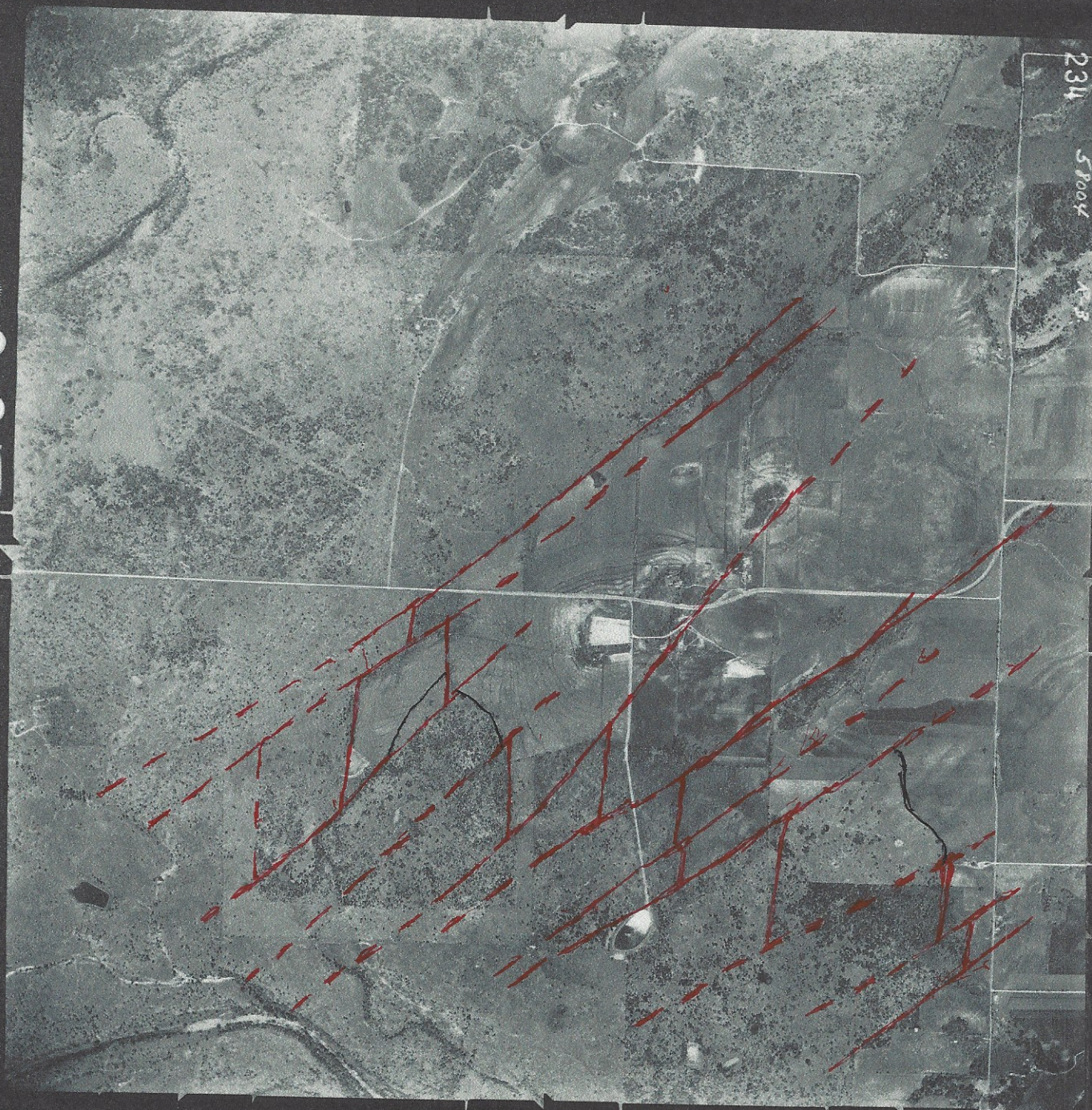
Photogeology of the Northern Part of the Dahlstrom Ranch: Revision 2
Two Air Photos of North and South Area of Geologic Map in Attachment A

215 1372MCS USAF 15APR68 11400FT AF-S9-4 ROLL-3

234

59004

4-3



CAL. P. L.

53.96 mm

267

50445

215 1372MCS USAF 15APR58 114.OFT AF-58-4 ROLL-3

58004

266

