

December 4, 2016

MEMORANDUM

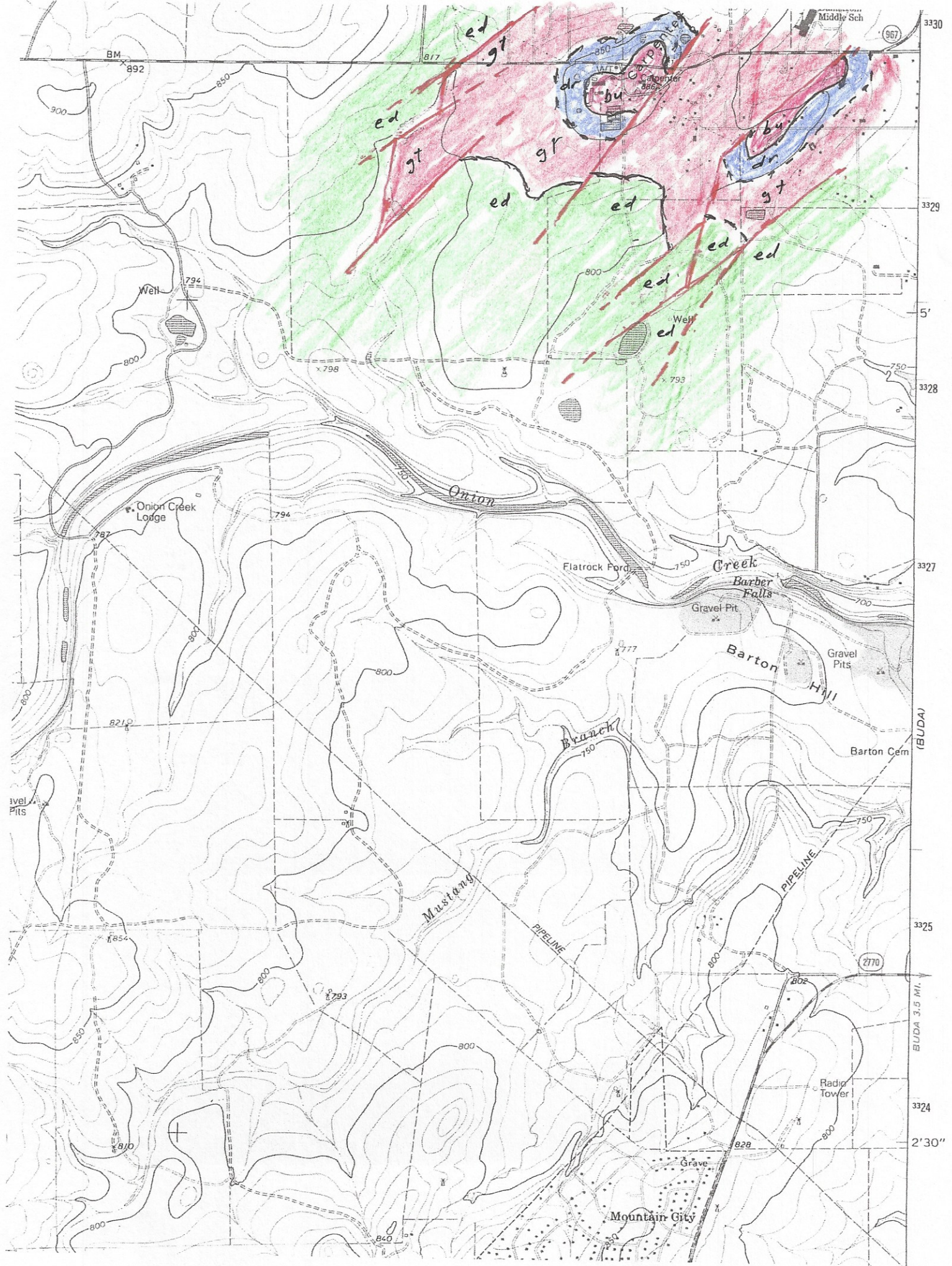
To: Brian Hunt
From: Tom Grimshaw
Subject: Update of Geologic Map of Northern Part of Dahlstrom Ranch

Based on our field trip to the northern part of Dahlstrom Ranch with Frank Davis on September 16 (see September 17 memo) and our subsequent discussions in your office, I have updated the geologic map of this portion of the Mountain City quadrangle. The updated map is included in Attachment A, and the photogeology is shown in Attachment B. The main changes from the last version are locations of faults of the Balcones system and stratigraphic contacts, particularly Ked-Kgt and Kgt-Kdr.

I look forward to your feedback, and to continuing our mapping of the Dahlstrom Ranch and elsewhere in the Mountain City Quad.

Attachment A.

Revised Geologic Map of the Northern Part of the Dahlstrom Ranch, Mountain City Quadrangle

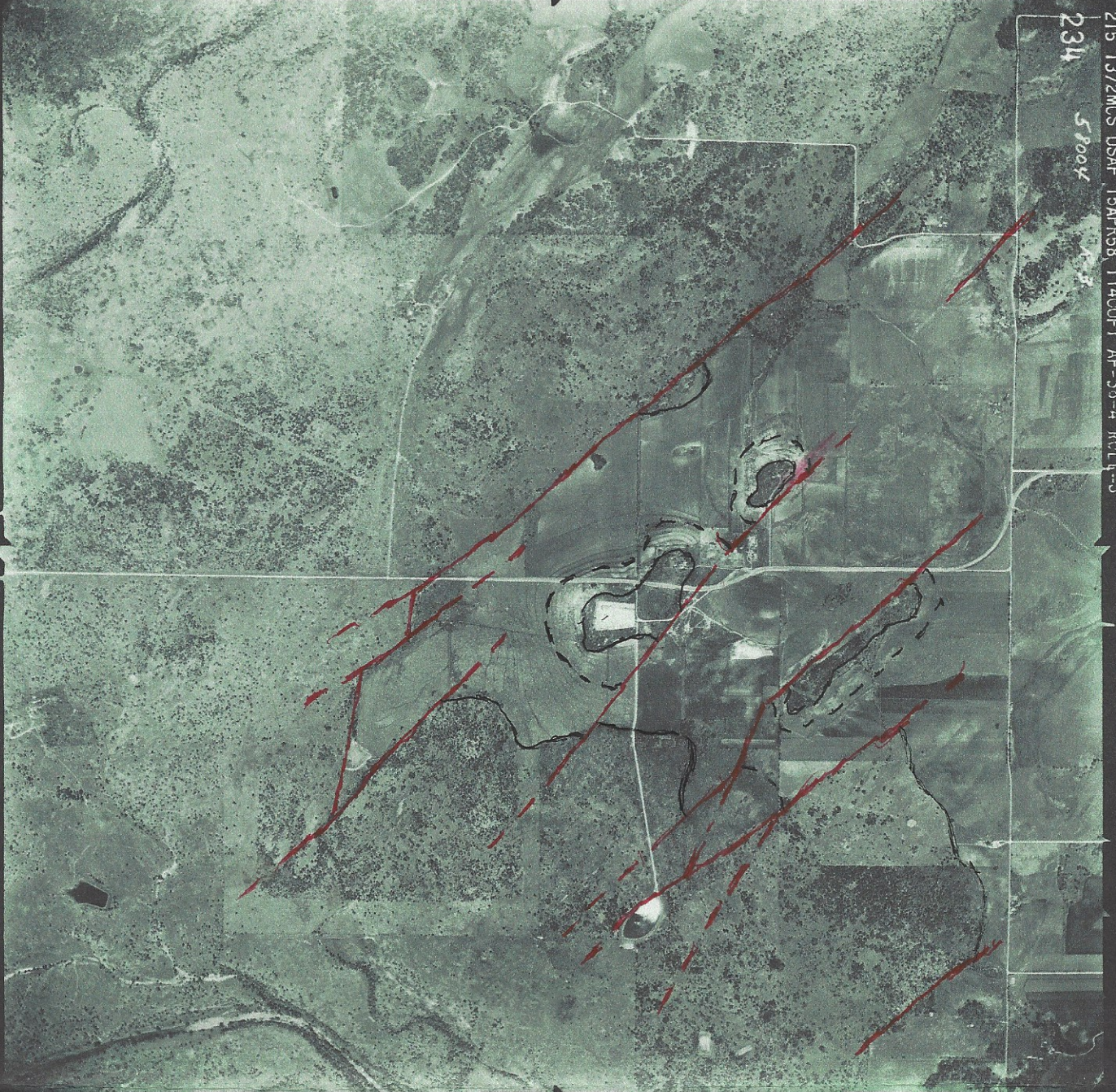


Attachment B.

Photogeology of the Northern Part of the Dahlstrom Ranch, Mountain City Quadrangle

215 1372MCS USAF 15APR58 11400FT AF-58-4 ROL 1-3

234 58004



53.96 mm

0.267

52445

Handwritten notes in the bottom left corner, including the word "where" and some illegible scribbles.

Handwritten red ink marks in the bottom right corner, including a wavy line and a small signature-like mark.