

September 16, 2016

MEMORANDUM

To: Brian Hunt
From: Tom Grimshaw
Subject: Proposed Field Stops for Dahlstrom Ranch Field Visit (Revision 1¹)

Based on our recent planning meeting for the Dahlstrom Ranch field trip, I have modified our proposed stops that were outlined in my August 16, 2016 memo. Please consider the following attachments to this memo:

- A. Shows a refined version of the photogeology hypothesis map that has been refined with further air photo study since our meeting.
- B. "Overprint" of the refined photogeology map on the previous geologic map
- C. Indicates revised proposed field trip stops in the Dahlstrom Ranch tract
- D. Shows mapping in the area north of Dahlstrom Ranch
- E. Shows mapping in the area south of Dahlstrom Ranch

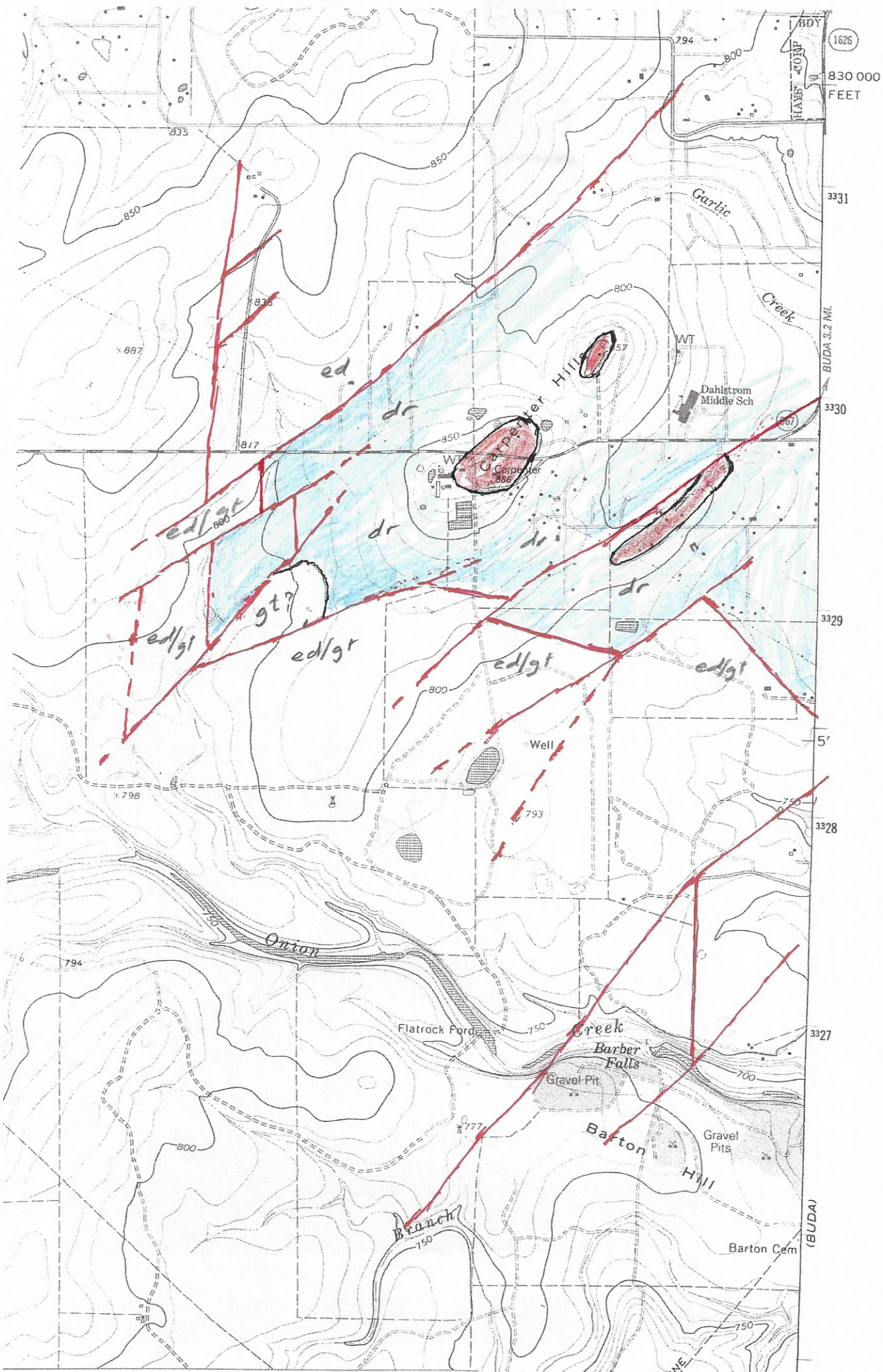
As noted in my August 16 memo, perhaps in a future field trip we can address the area south of Onion Creek to FM150.

Thank you (again) for your support and participation in this interesting mapping project!

¹ This memo replaces a hand-written version provided on September 15 and corrects a few errors.

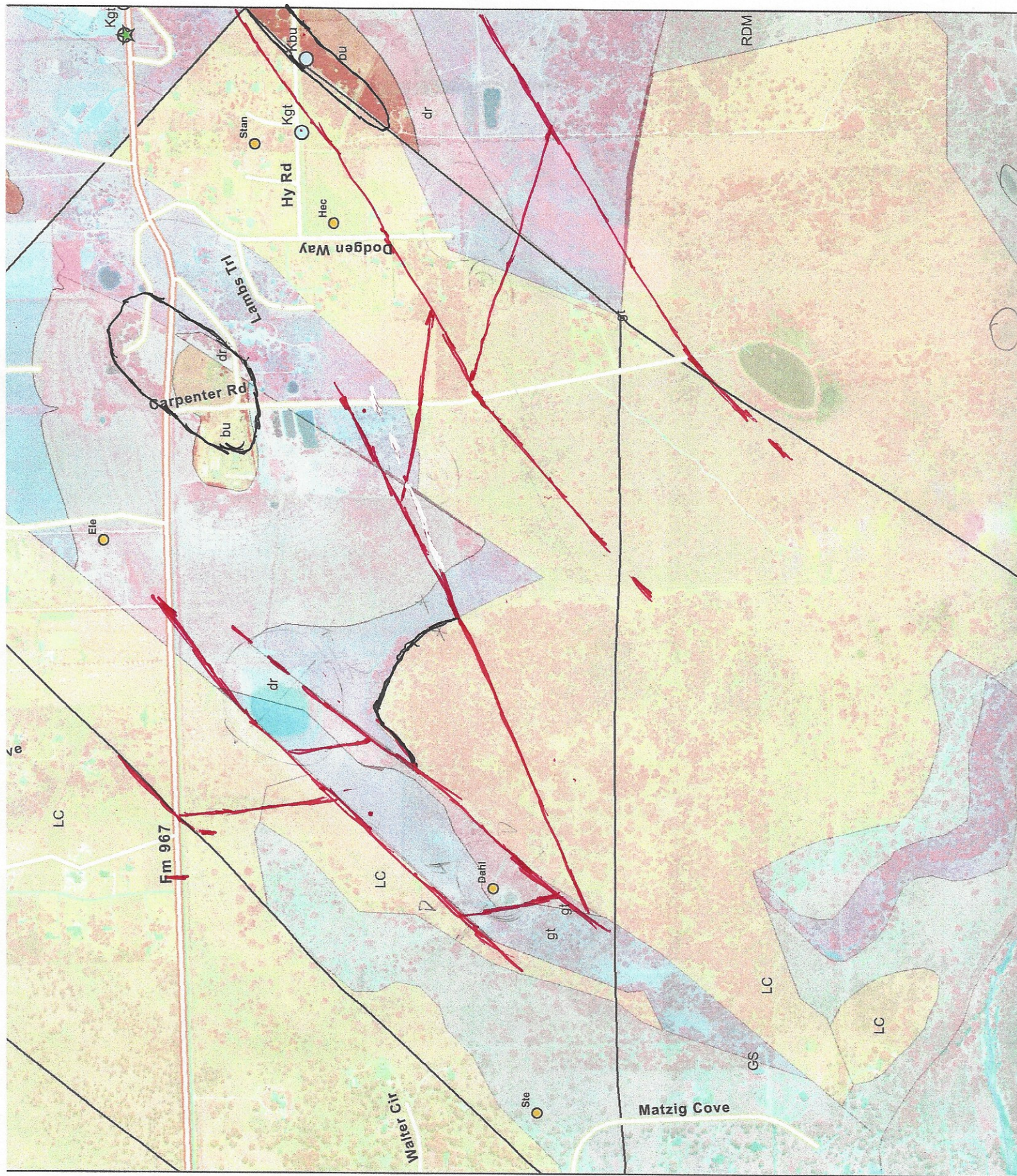
Attachment A.

Revised Photogeology Map of the Dahlstrom Ranch Tract



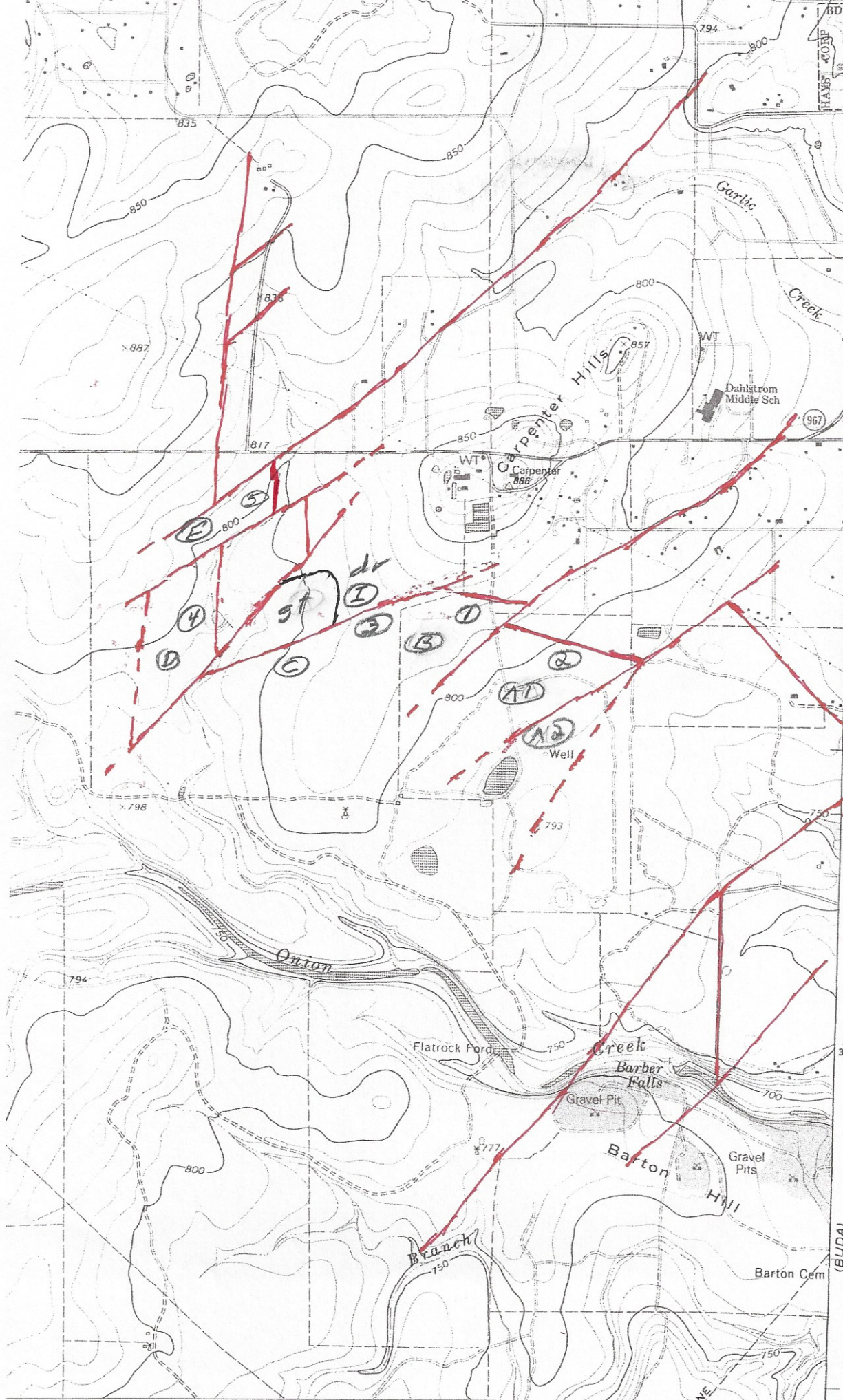
Attachment B.

Overprint of Photogeology Map on Previous Geologic Mapping



Attachment C.

Revised Proposed Field Stops on Dahlstrom Ranch



Fault
Contacts
(Med/Hgt - Hdr)

- ① ② ③
- ④ ⑤

Georgetown
Outcrops (and
Edwards
Contact
(upthrown
side of
faults)

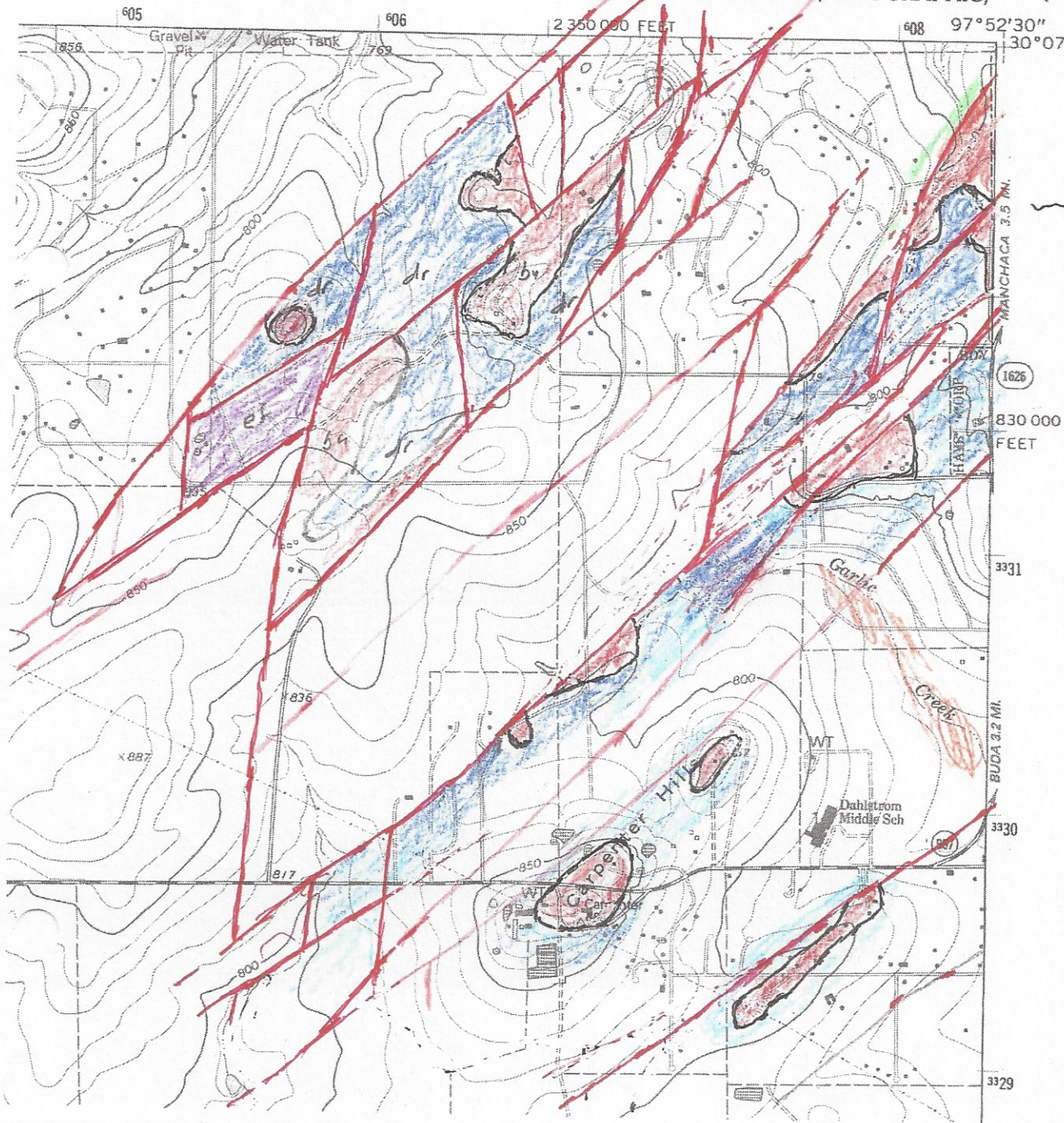
- A1 A2 B
- C D E F

Hgt - Hdr
Contact

- I

MOUNTAIN CITY QUADRANGLE
TEXAS-HAYS CO.
7.5 MINUTE SERIES (TOPOGRAPHIC)

OAK HILL



Attachment E.

Geologic Mapping in the Area South of Dahlstrom Ranch

