

July 7, 2016

DRAFT M E M O R A N D U M

To: Brian Hunt

From: Tom Grimshaw

Subject: Next Field Visit Proposal for the Mountain City Quad Mapping Project

Based on our recent conversation at lunch, I would like to propose the next area for our complementary mapping effort in the Mountain City Quadrangle. This would involve combining your field procedures and documenting in 11x17 format with my air photo stereo pair mapping. Both procedures involve field checks of outcrops and were well demonstrated in our work at the Rutherford Ranch tract.

I propose that we focus on the area between FM 967 and Onion Creek and from the eastern extent of Edwards outcrop to FM 1626. The proposed area is shown on two segments of the topo quad in Attachment A.

After we complete our work in this area, we can "fill in" as required with visits to the Sky Ranch tract and the Ruby Ranch development for details of mapping within the Edwards outcrop area.

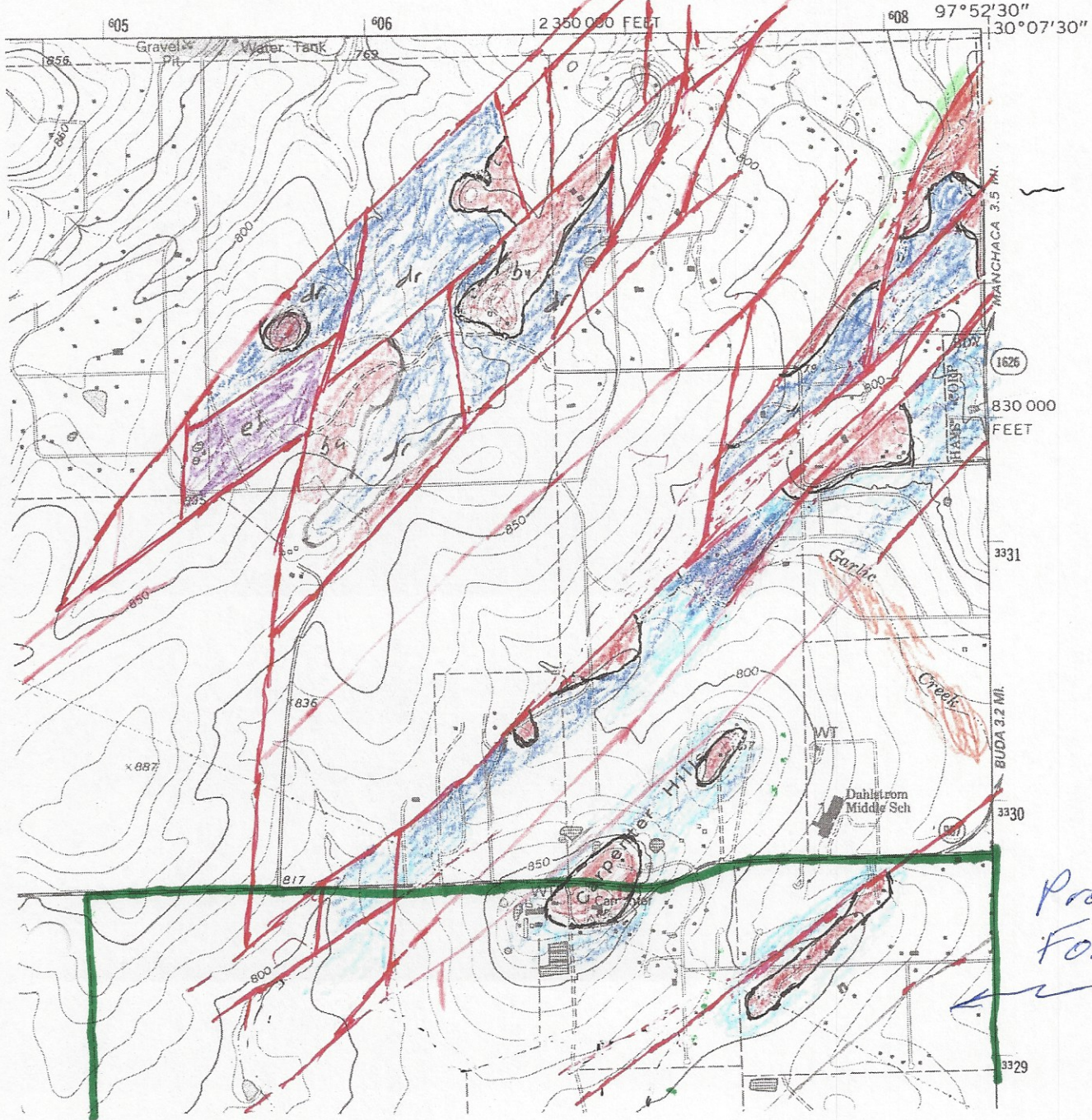
I look forward to working with you on this next "piece of the puzzle" for geologic mapping of the Mountain City quad.

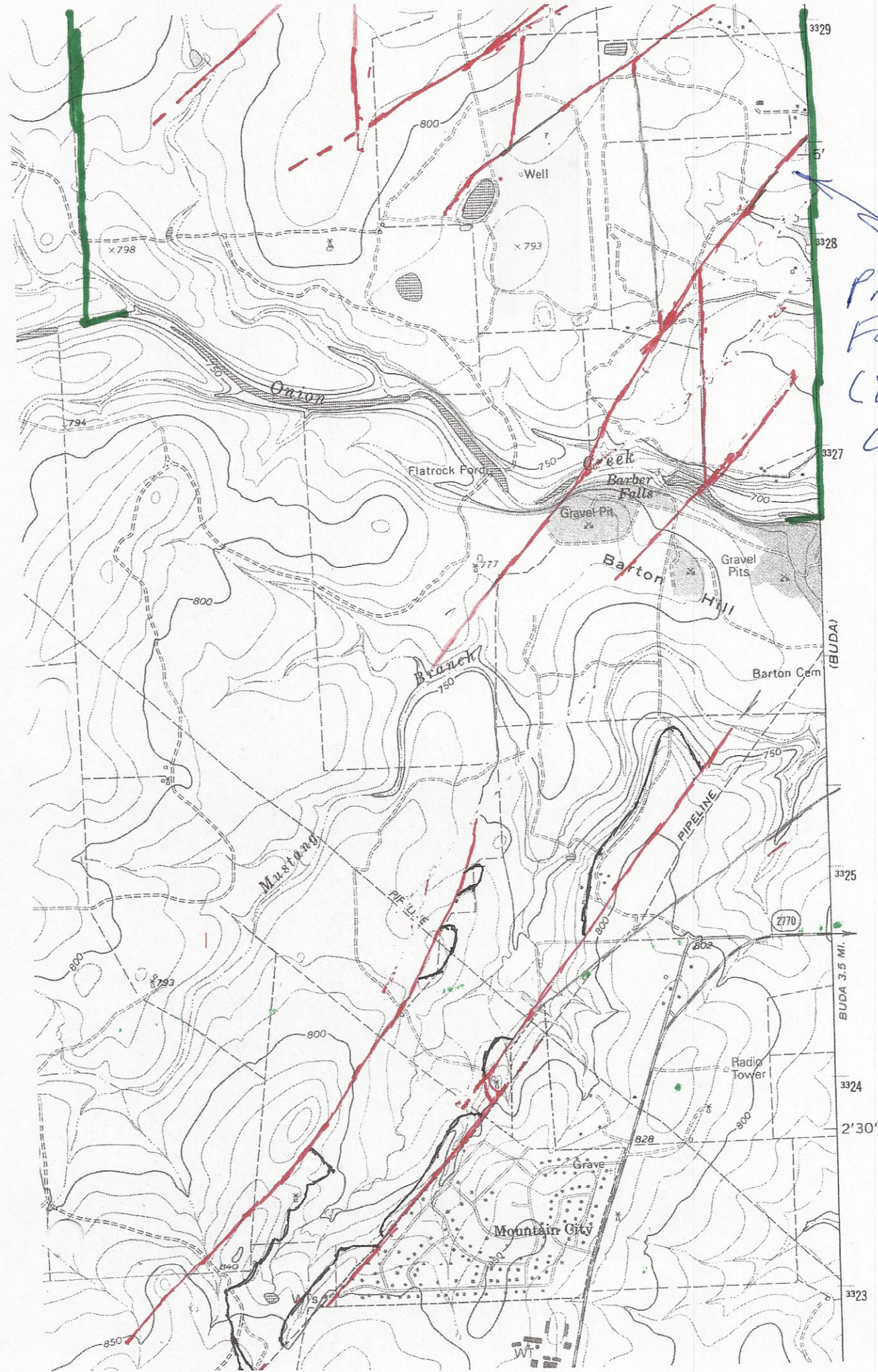
Attachment A.

Proposed Next Segment of Mapping Between FM 967 and Onion Creek

MOUNTAIN CITY QUADRANGLE
TEXAS-HAYS CO.
7.5 MINUTE SERIES (TOPOGRAPHIC)

OAK HILL





Proposed
Focus Area
(to Onion
Creek)