

April 1, 2019

## MEMORANDUM

To: Brian Hunt  
From: Tom Grimshaw  
Subject: Additional Geologic Mapping in and Around the Anthem Tract

In my December 4, 2018 memo to Chock Woodruff (copy to you), I noted uncertainties in a couple of fault blocks near the Anthem Tract just north of RR 150. Although the proposed field trip with Chock has not been accomplished, I have had the opportunity to make additional field visits to clear up the uncertainties. The revised geologic map of the area in question is in Attachment A. The relevant air photo with the mapping is in Attachment B.

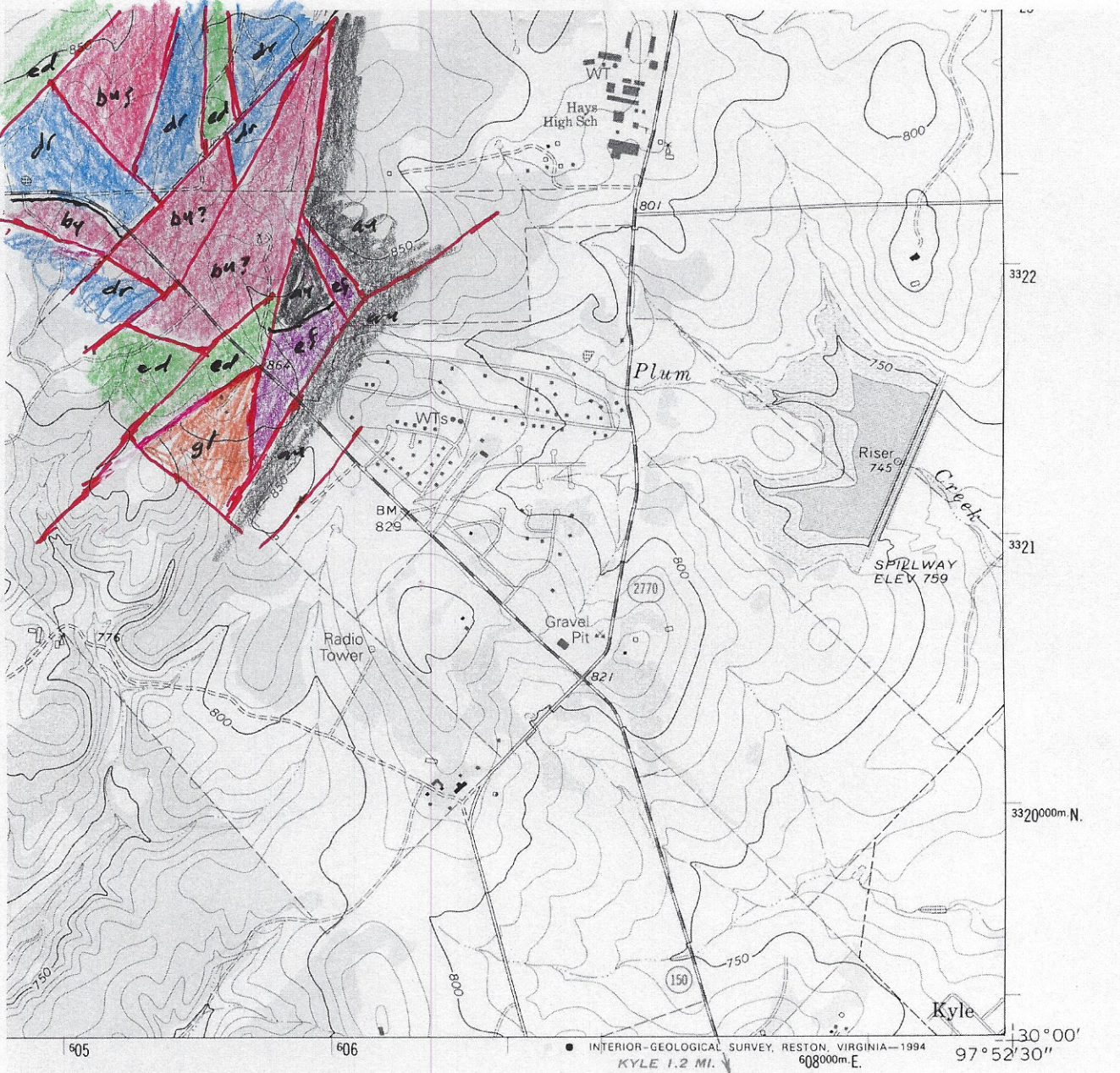
Please let me know if you have any comments or questions on this additional mapping around the Anthem Tract.



Attachment A.

Revised Geologic Map in and around the Anthem Tract





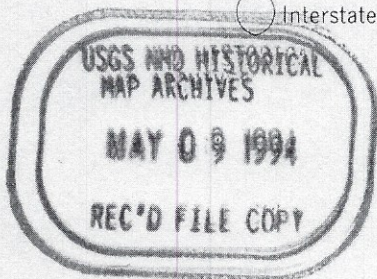
#### ROAD CLASSIFICATION

Primary highway, hard surface ————— Light-duty road, hard or improved surface —————  
 Secondary highway, hard surface ————— Unimproved road —————  
 Interstate Route U. S. Route State Route



QUADRANGLE LOCATION

3097-222



#### MOUNTAIN CITY, TEX.

30097-A8-TF-024

1968  
 REVISED 1994  
 DMA 6444 III SW-SERIES V882



Attachment B.

Air Photo Showing Geologic Mapping in and around the Anthem Tract



232 1372MCS USAF 4MAY58 11400FT AF-58-4 ROLL-6

581

5800X R-6



Handwritten marks in blue and red ink at the top right of the page.

