

February 6, 2019

MEMORANDUM

To: Brian Hunt
From: Tom Grimshaw
Subject: Mapping of Eagle Ford and Austin Units East of the Blanco River and South of Ranch Road 150

I recently had the opportunity to do additional air photo analysis and field checks to map the area of Eagle Ford and Austin exposures east of the Blanco River and south of Ranch Road 150.

The results of this mapping are shown on the air photo in Attachment A and on the geologic map in Attachment B. This mapping extends the area previously described in my memo to Chock Woodruff (with copy to you) of December 4, 2018. The map included in that memo is shown in Attachment C (where differences in the two maps are observed, Attachment B is more current than Attachment C).

Please let me know if you have any comments or questions on this latest round of mapping in the Mountain City Quadrangle.

8/3/2019

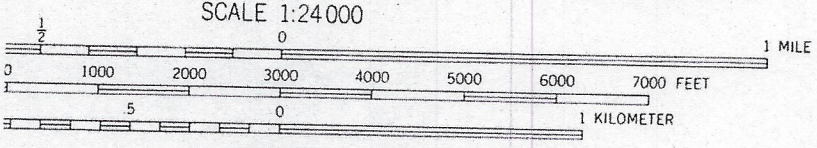
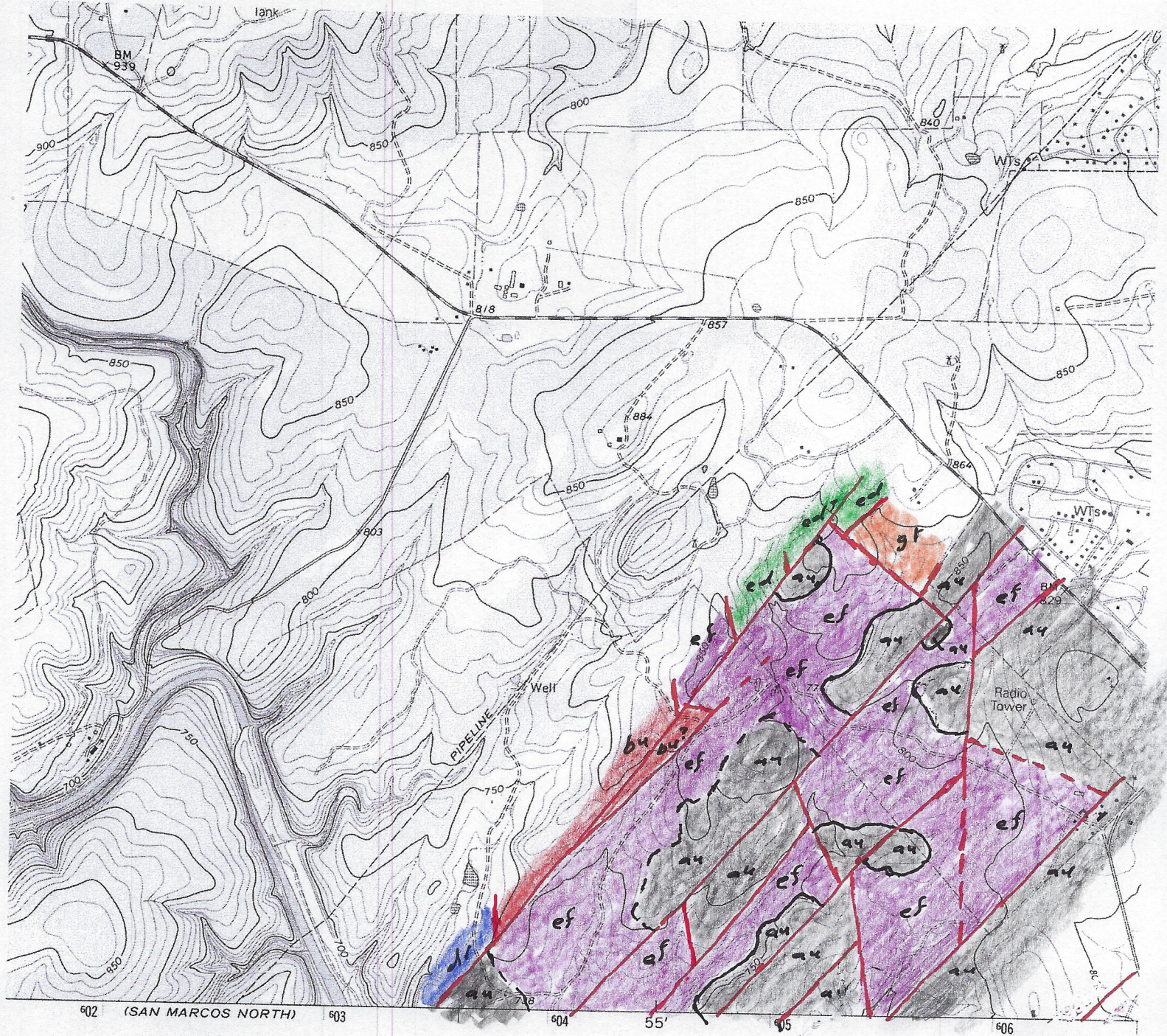
222 1372MCS USAF 22APR58 11400FT AF-58-4 R011-4

322

USGS
science for a changing world

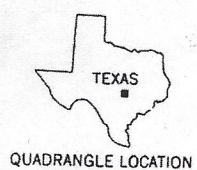
KODAK AEROGRAPHIC SAFETY FILM 1A

m Attachment A
Photogeology of the Area West of
the Blanco River and South of
RR 150



CONTOUR INTERVAL 10 FEET
NATIONAL GEODETIC VERTICAL DATUM OF 1929

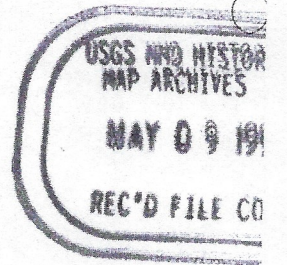
MAP COMPLIES WITH NATIONAL MAP ACCURACY STANDARDS
GEOLOGICAL SURVEY, DENVER, COLORADO 80225, OR RESTON, VIRGINIA 22092
DESCRIBING TOPOGRAPHIC MAPS AND SYMBOLS IS AVAILABLE ON REQUEST



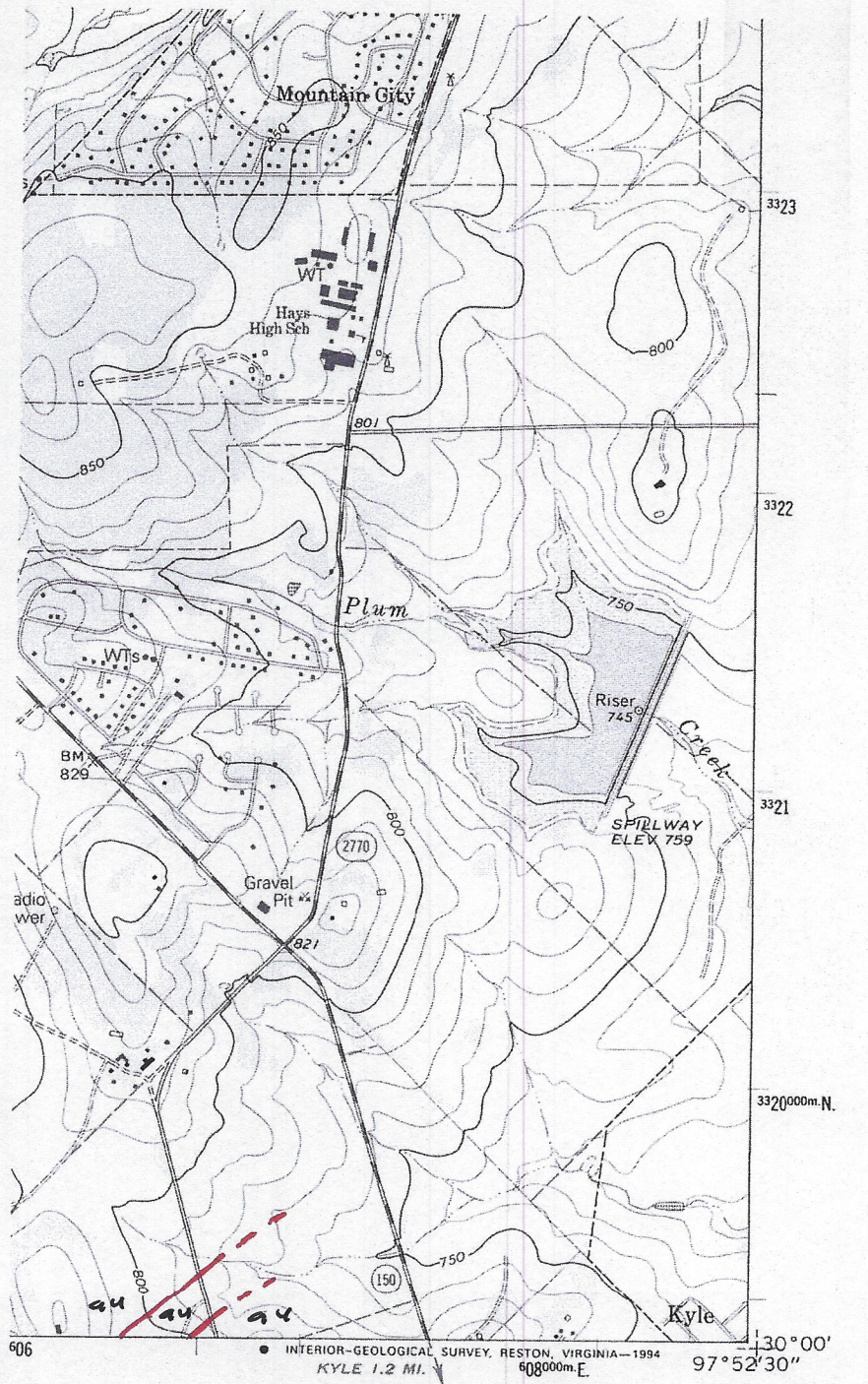
QUADRANGLE LOCATION

3097-222

Primar
hard st
Second
hard st



Attachment B1
Geologic Map of the Area
West of the Blanco River and
South of R R 150



ROAD CLASSIFICATION

Primary highway, hard surface	Light-duty road, hard or improved surface
Secondary highway, hard surface	Unimproved road
Interstate Route	U. S. Route
	State Route

USGS AND HISTORICAL MAP ARCHIVES
MAY 09 1994
REC'D FILE COPY

MOUNTAIN CITY, TEX.
30097-A8-TF-024
1968
REVISED 1994
DMA 6444 III SW-SERIES V882

Attachment B2
Faults in the Austin Chalk East of the Area in Attachment B1

