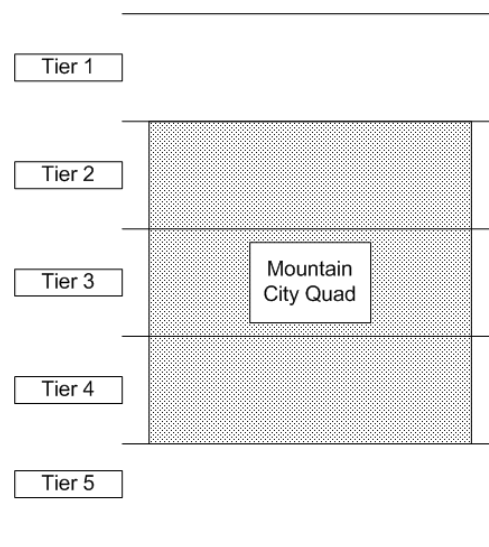


October 14, 2018

MEMORANDUM

To: Brian Hunt
From: Tom Grimshaw
Subject: Geologic Map Segments of the Mountain City Quadrangle: Posted on Dropbox for Digitizing for GIS

In my memo of September 30, 2018, I provided the geologic map segments of the Mountain City Quadrangle as shown below (Tiers 1 to 4; Tier 5 is not yet ready).



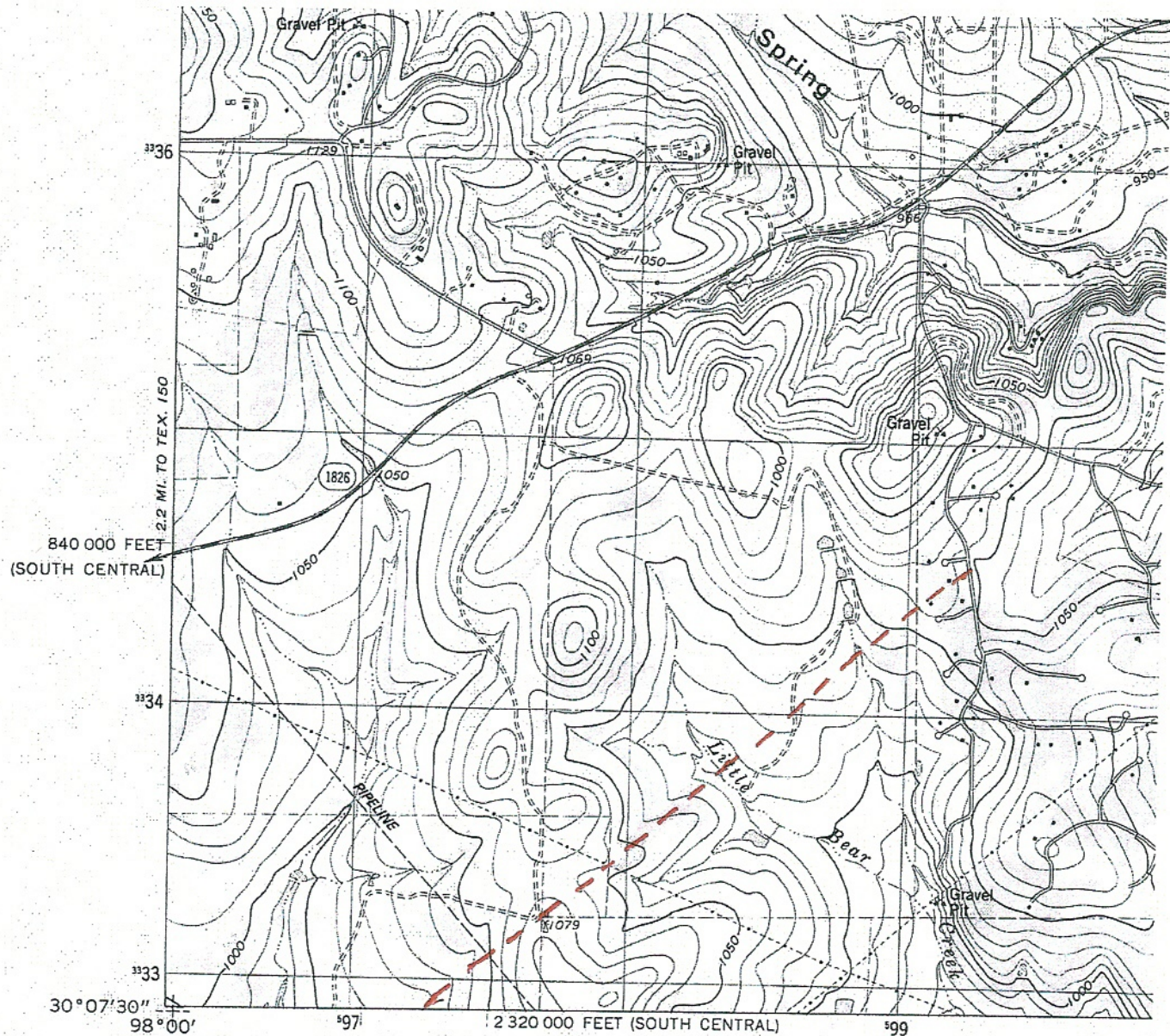
I have now had the opportunity to prepare a preliminary colored version of the map. The colored segments are provided in Attachment A1 to A4 (Tiers 1 to 4).

As expected, a few inconsistencies and needs for filling in were discovered as the maps were been colored. These additions and corrections are currently underway. When they are completed I will update the current versions of the map segments in our Dropbox folder. And I will add the colored map to the folder as well.

As always, please let me know if you have any questions or concerns.

Attachment A1.

Tier 1



(DRIFTWOOD)
6344 11 SE

Mapped, edited, and published by the Geological Survey

Control by USGS and NOS/NOAA

Topography by photogrammetric methods from aerial photographs taken 1967. Field checked 1968. Revised from aerial photographs taken 1985. Field checked 1986. Map edited 1986

Projection: Texas coordinate system, south central zone (Lambert conformal conic)

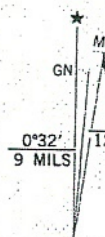
10,000-foot grid ticks based on Texas coordinate system, south central and central zones

1000-meter Universal Transverse Mercator grid, zone 14 1927 North American Datum

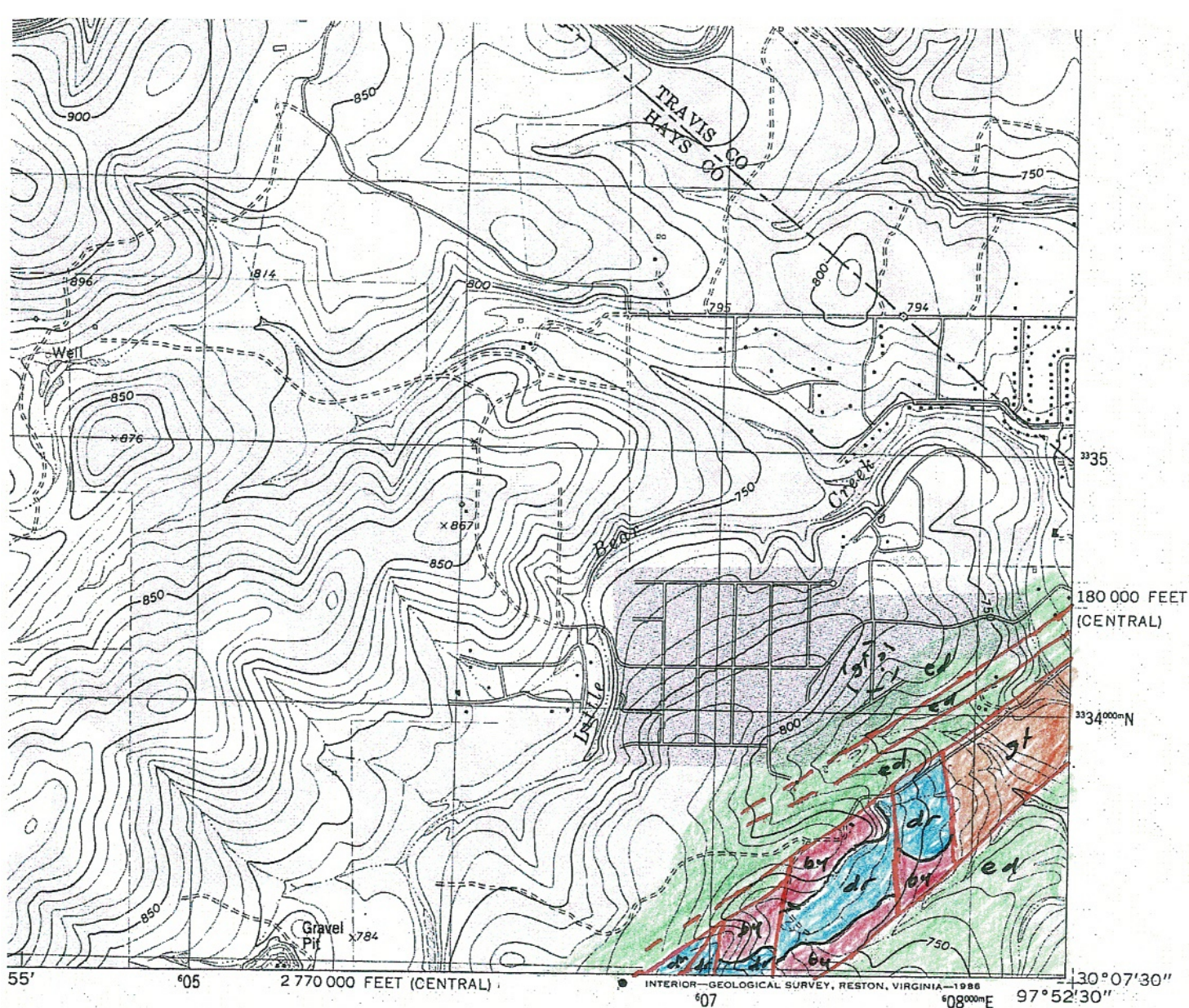
To place on the predicted North American Datum 1983 move the projection lines 18 meters south and 28 meters east as shown by dashed corner ticks

Fine red dashed lines indicate selected fence lines

Red tint indicates areas in which only landmark buildings are shown



UTM GRID AND 1986 N
DECLINATION AT CEN
DIAGRAM IS APP



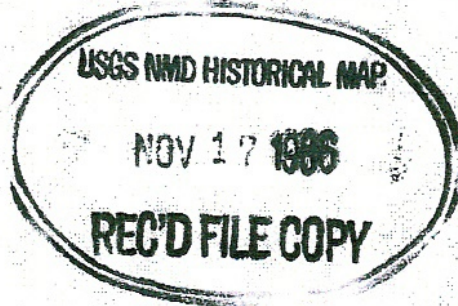
ROAD CLASSIFICATION

- | | |
|---|--|
| Primary highway,
hard surface..... | Light-duty road, hard or
improved surface |
| Secondary highway,
hard surface..... | Unimproved road |
| ○ Interstate Route | ○ U. S. Route ○ State Route |



QUADRANGLE LOCATION

3097-223



SIGNAL HILL, TEX.

NW/4: BUDA 15' QUADRANGLE
30097-B8-TF-024

1986

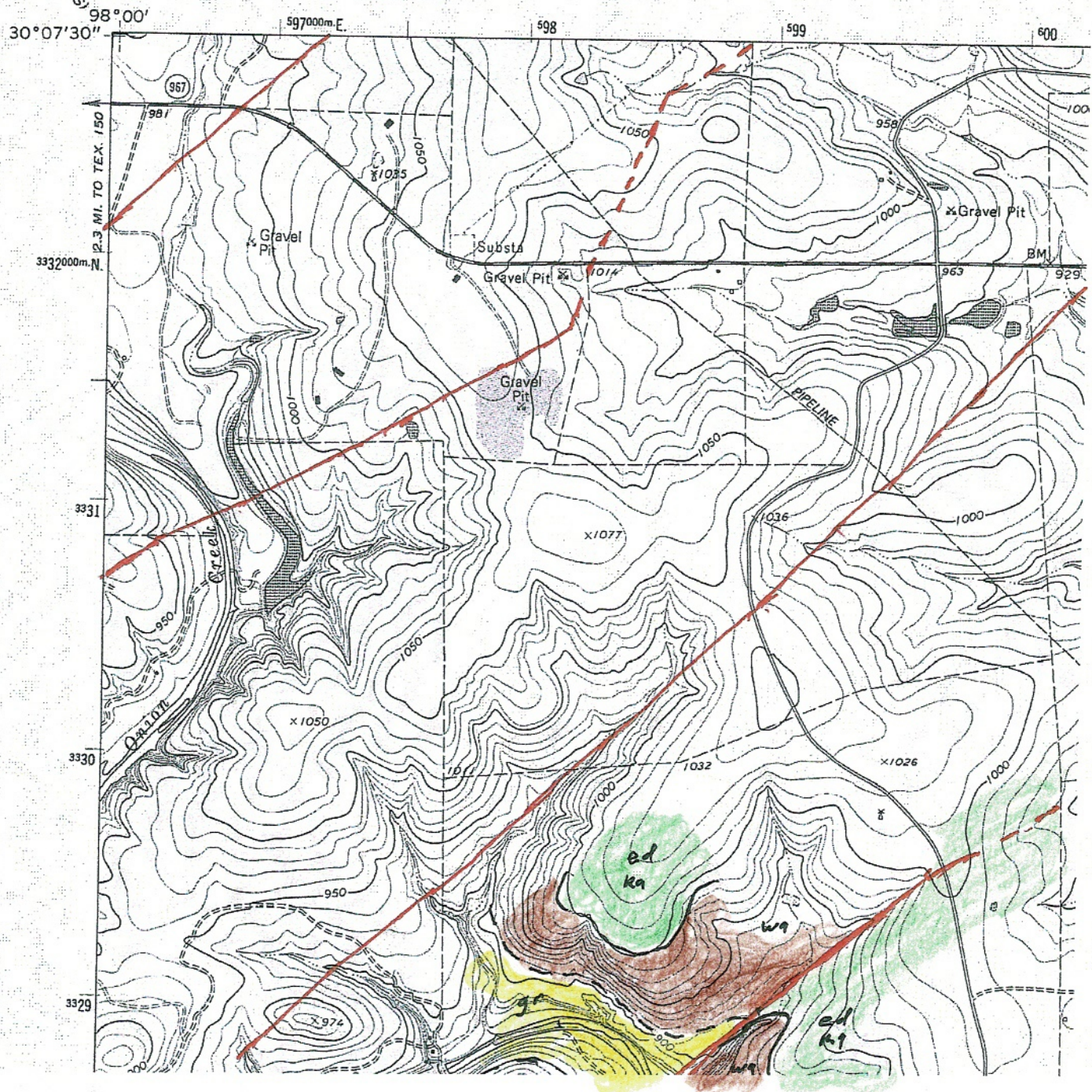
DMA 6444 III NW-SERIES V882

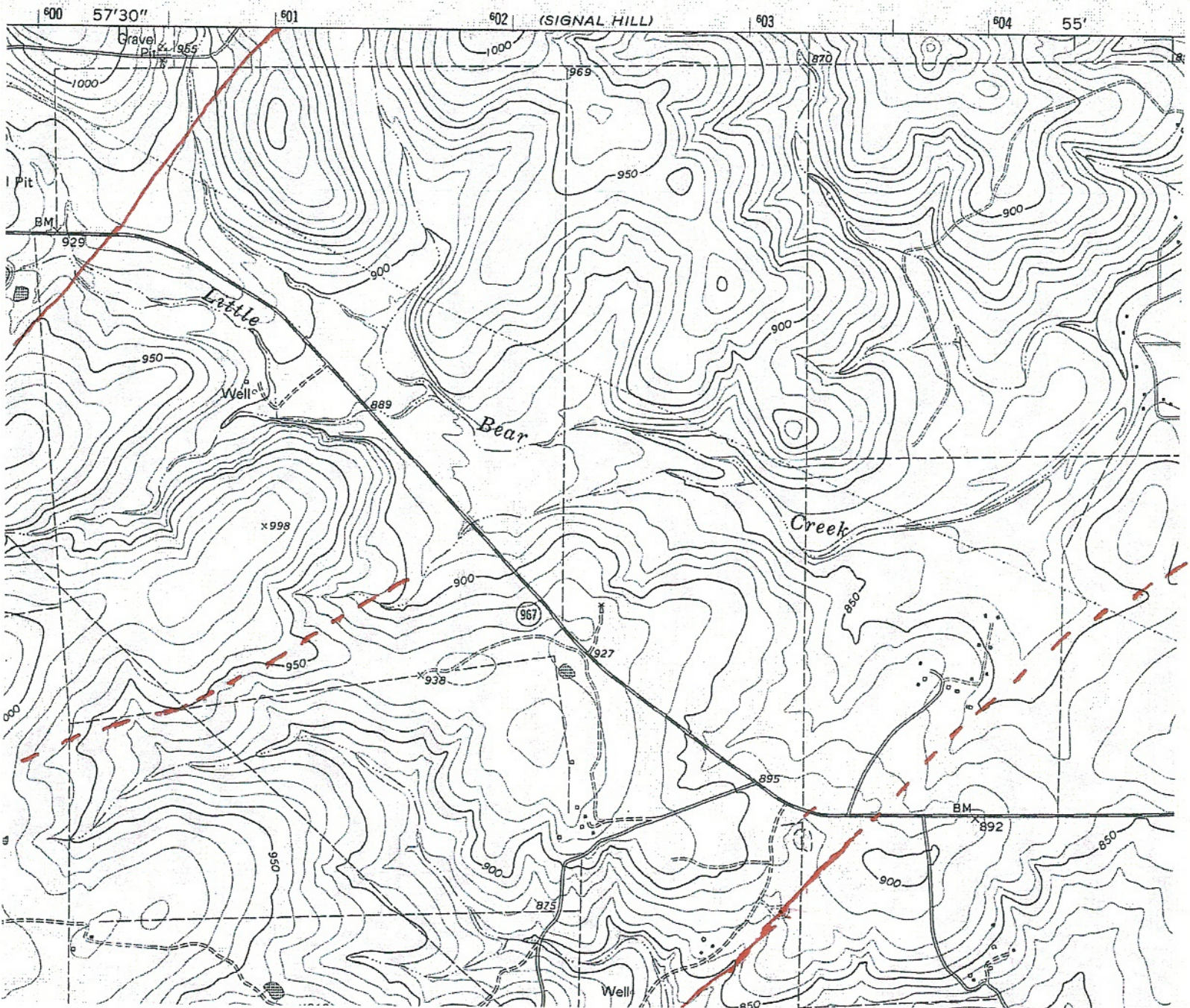
(BUDA)
6444 III SE

Attachment A2.

Tier 2

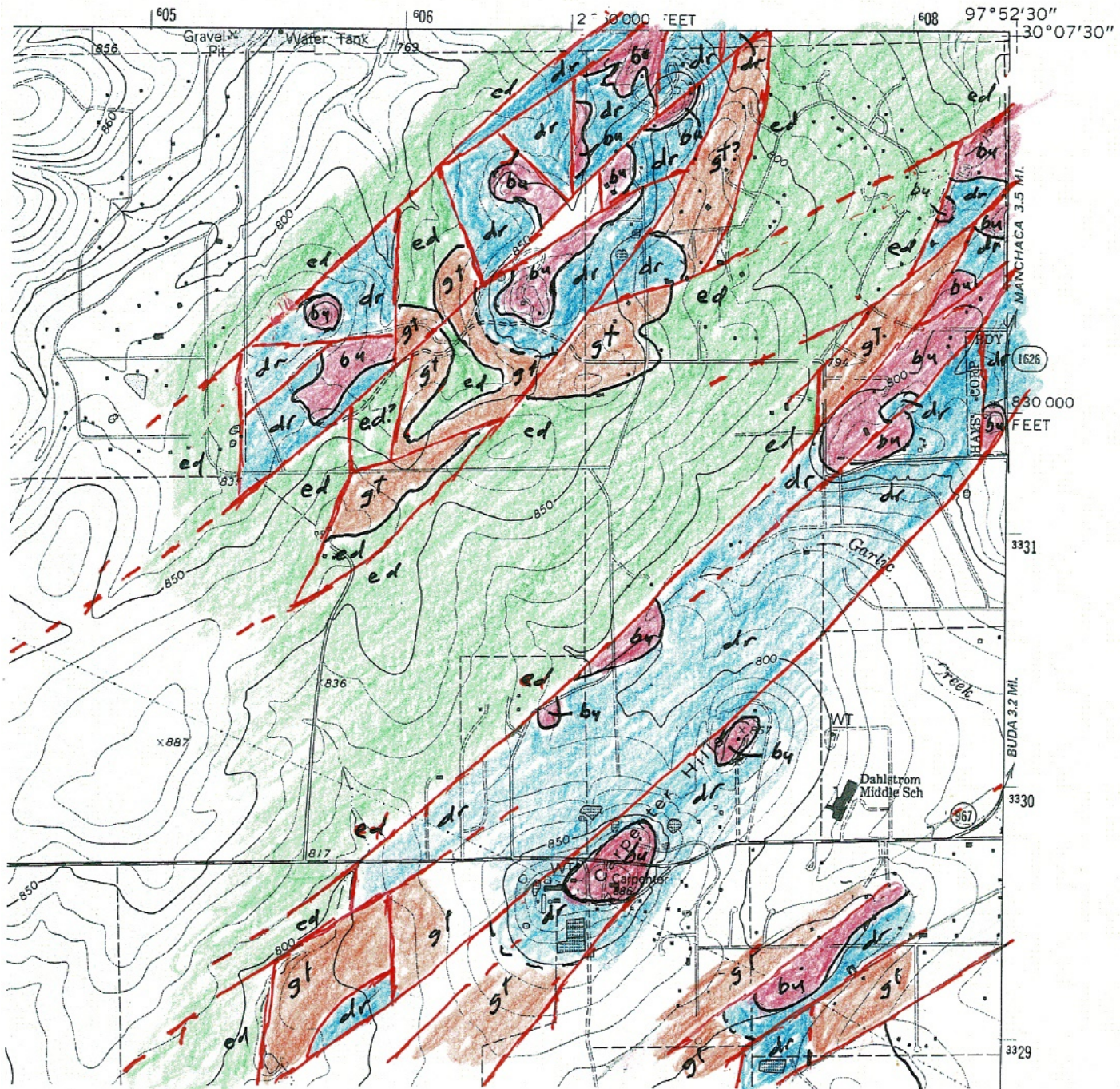
(DRIPPING SPRINGS)



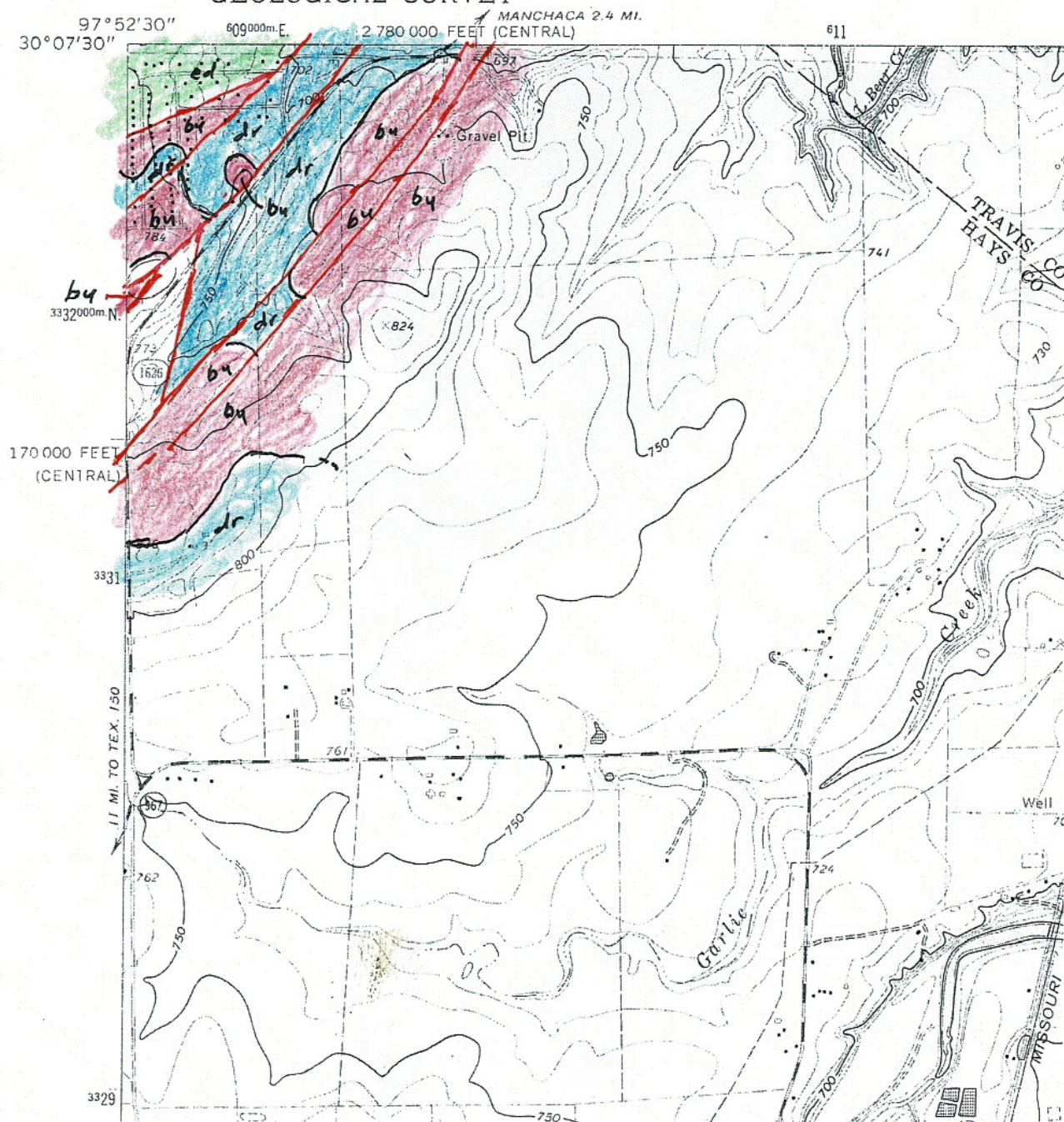


MOUNTAIN CITY QUADRANGLE
TEXAS-HAYS CO.
7.5 MINUTE SERIES (TOPOGRAPHIC)

(OAK HILL)

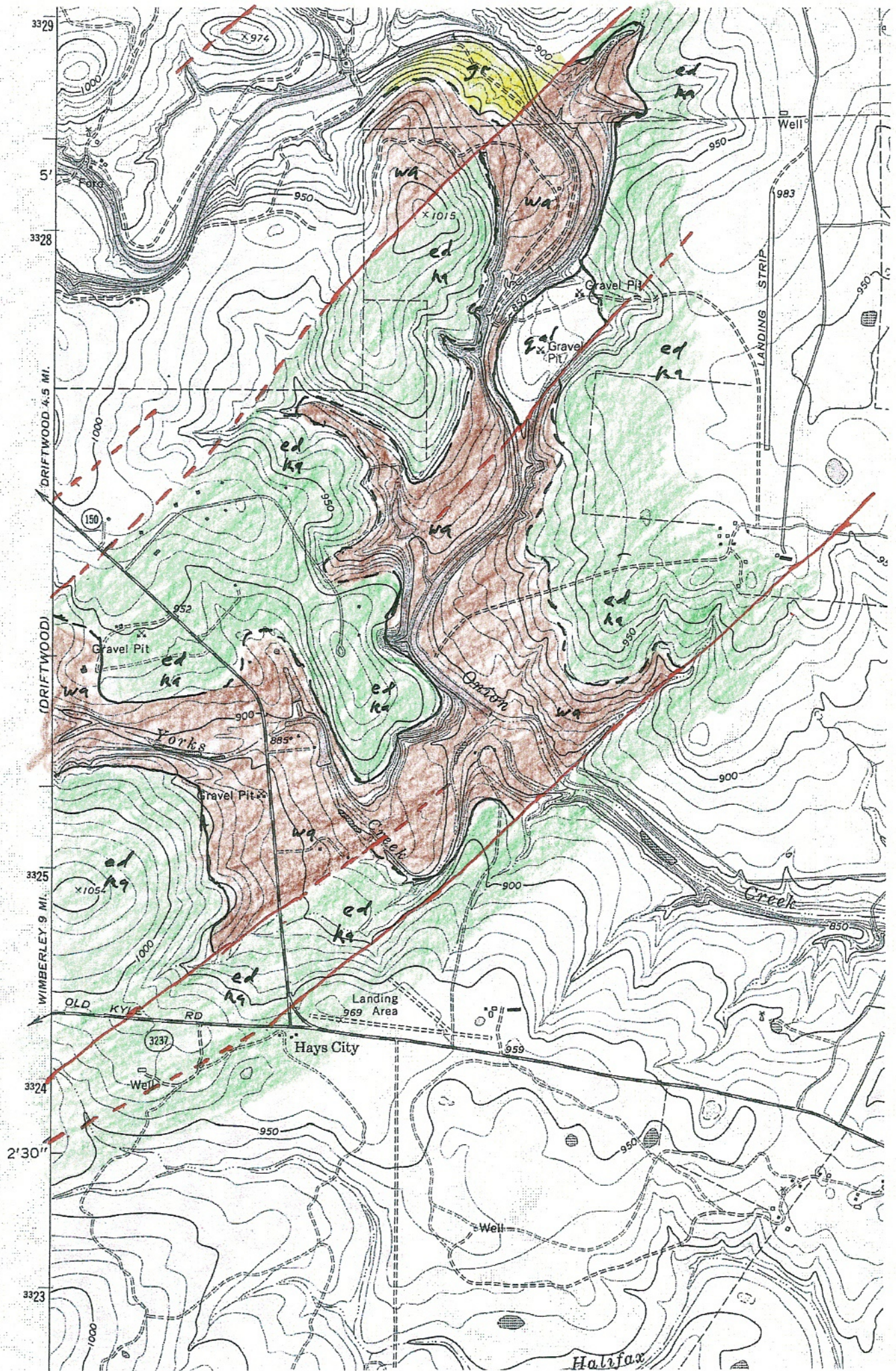


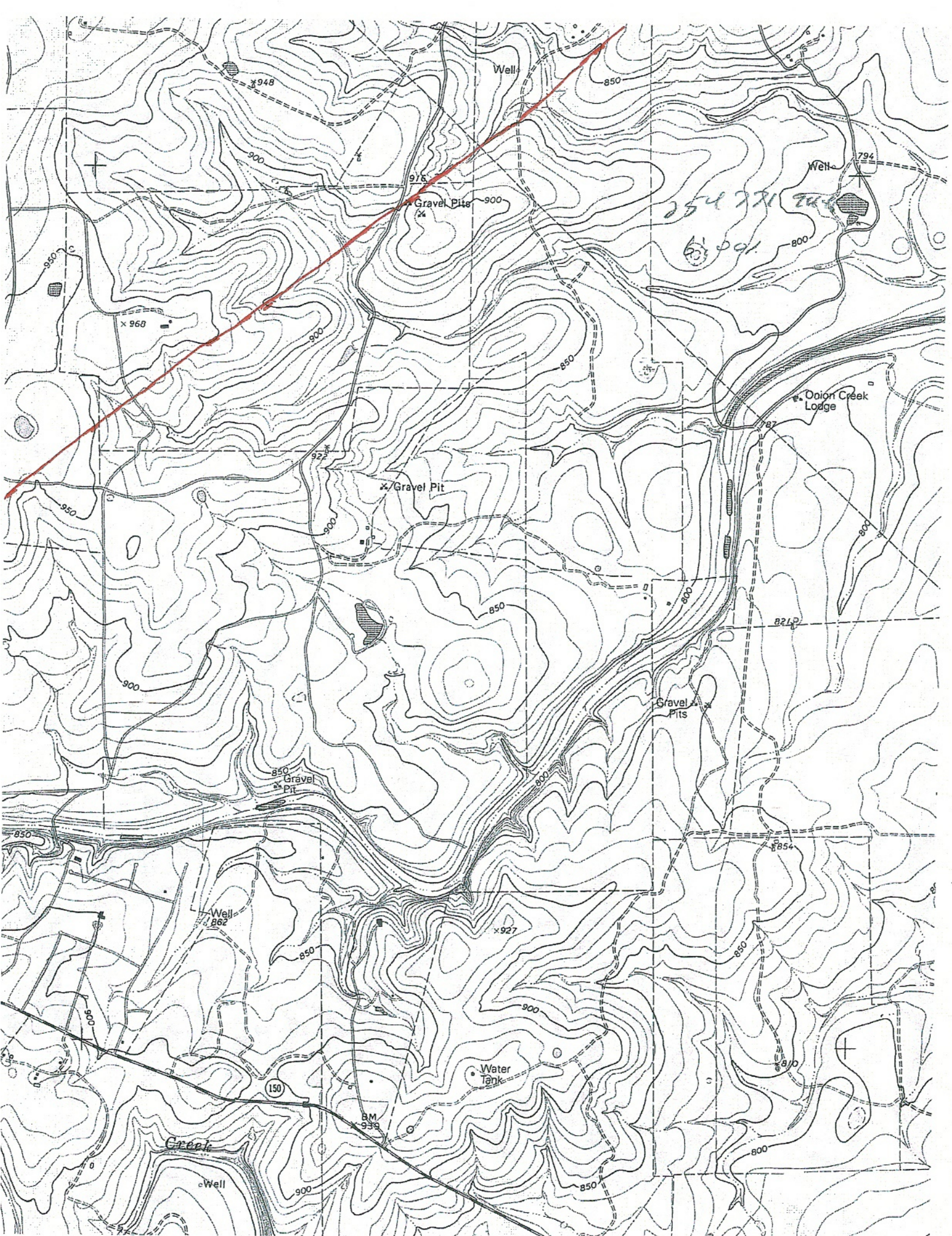
6444 III NW
(SIGNAL HILL)

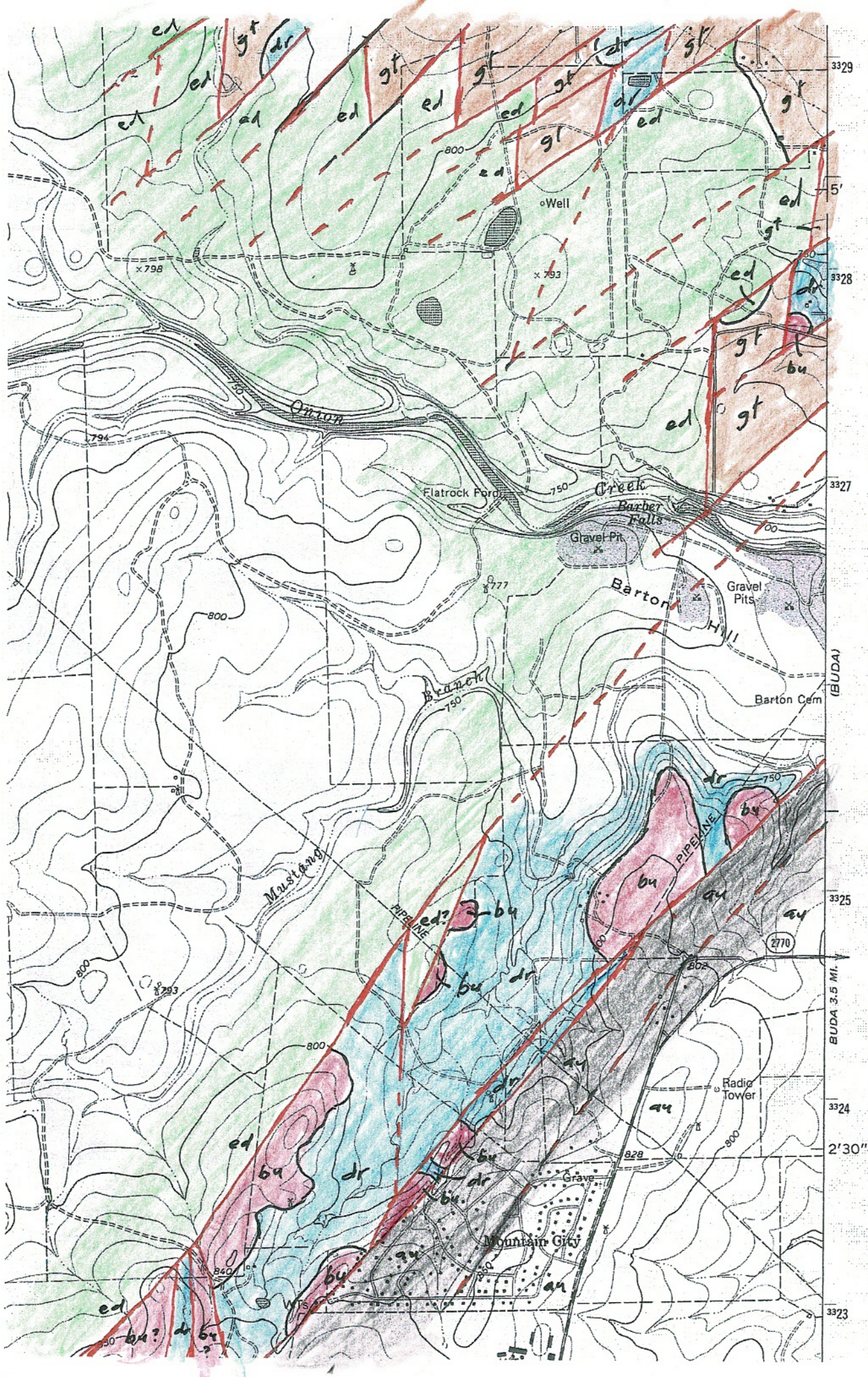


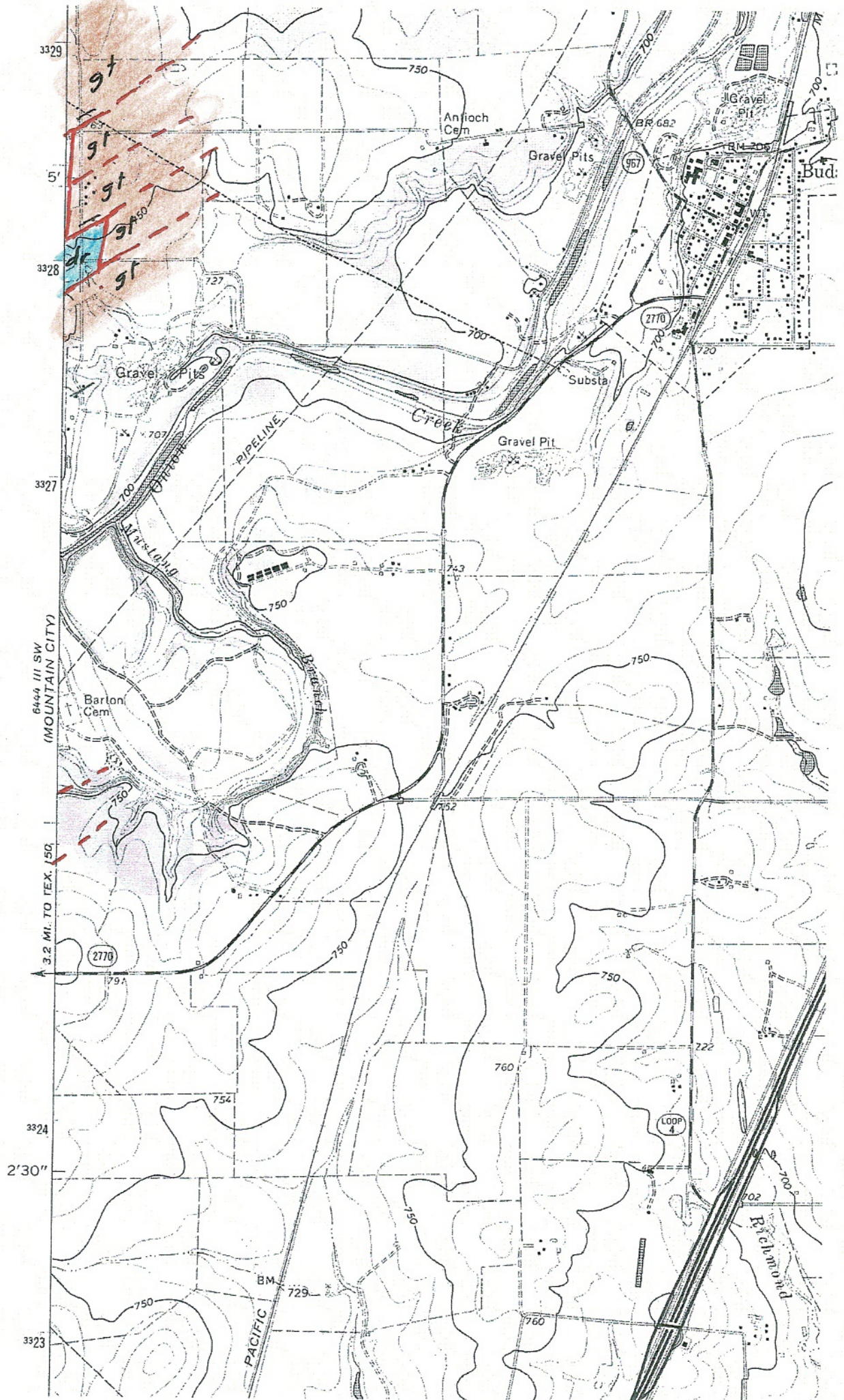
Attachment A3.

Tier 3



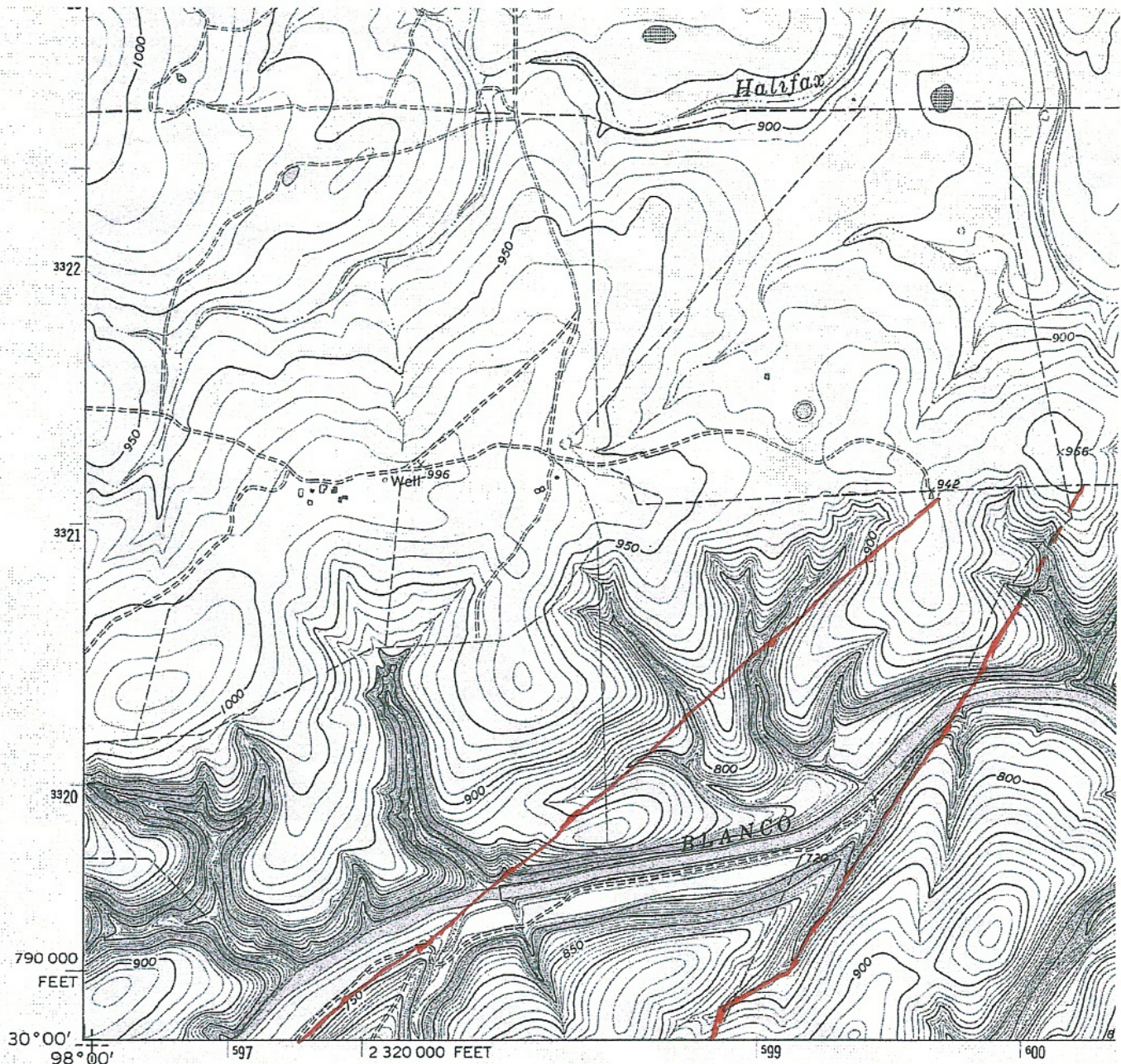






Attachment A4.

Tier 4



(WIMBERLEY)

Produced by the United States Geological Survey

Control by USGS and NOS/NOAA

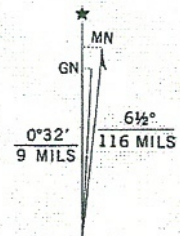
Compiled from aerial photographs taken 1967. Revisions shown in purple compiled from aerial photographs taken 1986 and other sources and have been field checked. Map edited 1994. Conflicts may exist between some updated features and previously mapped contours.

North American Datum of 1927 (NAD 27). Projection and 10 000-foot ticks : Texas Coordinate System, south central zone (Lambert Conformal Conic)

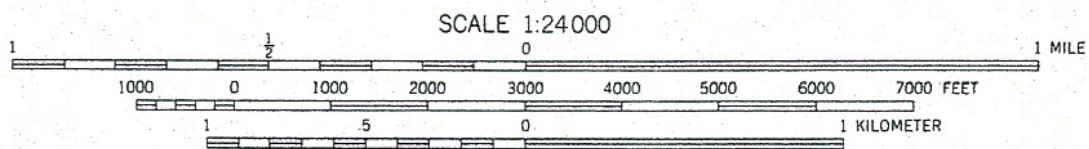
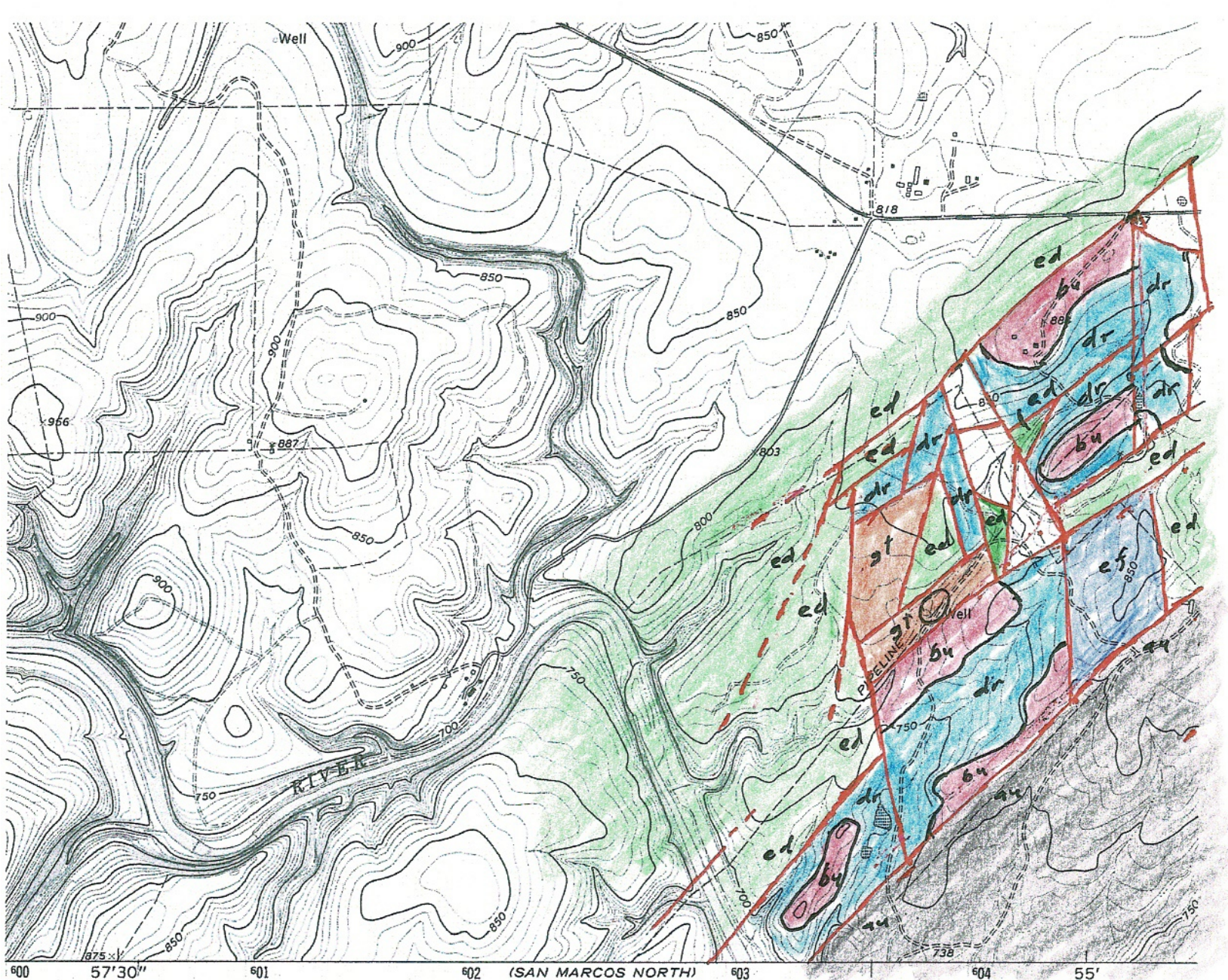
Blue 1000-meter Universal Transverse Mercator ticks, zone 14

North American Datum of 1983 (NAD 83) is shown by dashed corner ticks. The values of the shift between NAD 27 and NAD 83 for 7.5-minute intersections are obtainable from National Geodetic Survey NADCON software

Areas covered by dashed light blue pattern are subject to controlled inundation

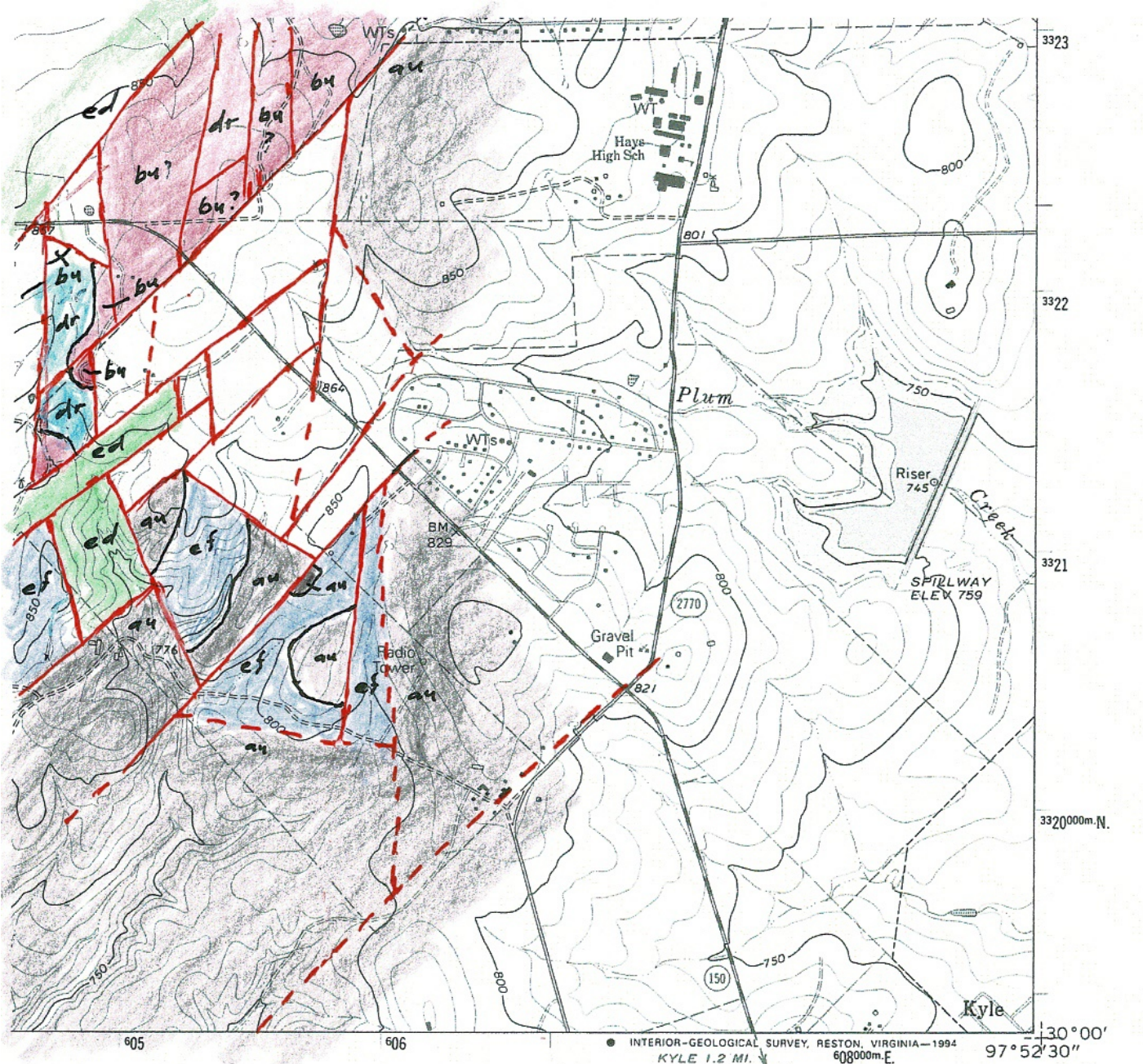


UTM GRID AND 1994 MAGNETIC NORTH DECLINATION AT CENTER OF SHEET



CONTOUR INTERVAL 10 FEET
NATIONAL GEODETIC VERTICAL DATUM OF 1929

THIS MAP COMPLIES WITH NATIONAL MAP ACCURACY STANDARDS
FOR SALE BY U. S. GEOLOGICAL SURVEY, DENVER, COLORADO 80225, OR RESTON, VIRGINIA 22092
A FOLDER DESCRIBING TOPOGRAPHIC MAPS AND SYMBOLS IS AVAILABLE ON REQUEST



INTERIOR-GEOLOGICAL SURVEY, RESTON, VIRGINIA-1994
KYLE 1.2 MI. 608000m.E.

ROAD CLASSIFICATION

Primary highway, hard surface ——— Light-duty road, hard or improved surface ———
Secondary highway, hard surface ——— Unimproved road ———
Interstate Route U. S. Route State Route



QUADRANGLE LOCATION

3097-222



MOUNTAIN CITY, TEX.

30097-A8-TF-024

1968
REVISED 1994
DMA 6444 III SW-SERIES V882