

May 19, 2018

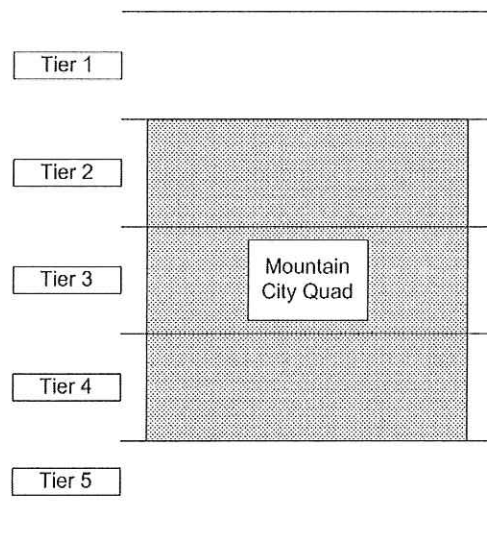
MEMORANDUM

To: Brian Hunt
From: Tom Grimshaw
Subject: Geologic Map of the Mountain City Quadrangle: Updated Segments for Digitizing for GIS

As we prepare to finalize our geologic map for the Mountain City Quadrangle (updated from previous mapping), we have agreed to digitize the map for GIS presentation. I previously provided by memo dated May 5, 2018 a set of a set of map segments with the geologic mapping. Then during our meeting on May 9, I noted that the map in the May 5 memo was not actually the most current.

The purpose of this memo is to provide map segments with up-to-date mapping. The nine 2.5-minute segments for the 7.5-minute Mountain City Quadrangle are presented in Attachment A. Although there will be additions to the map after more field visits, (such as for the Blanco River Ranch area), I don't anticipate substantial changes in the current mapping.

As noted in my May 5 memo, the geologic map of the quadrangle is documented in nine 2.5-minute segments and, in addition, portions of the 16 adjoining segments (to allow "mapping into" the surrounding quads). The 25 segments are in five "Tiers" from north to south as depicted below.



Each Tier consists of five segments. Attachment A contains the nine segments within the Mountain City Quadrangle and some of the segments surrounding the quad. The remaining surrounding segments will be provided in a future memo.

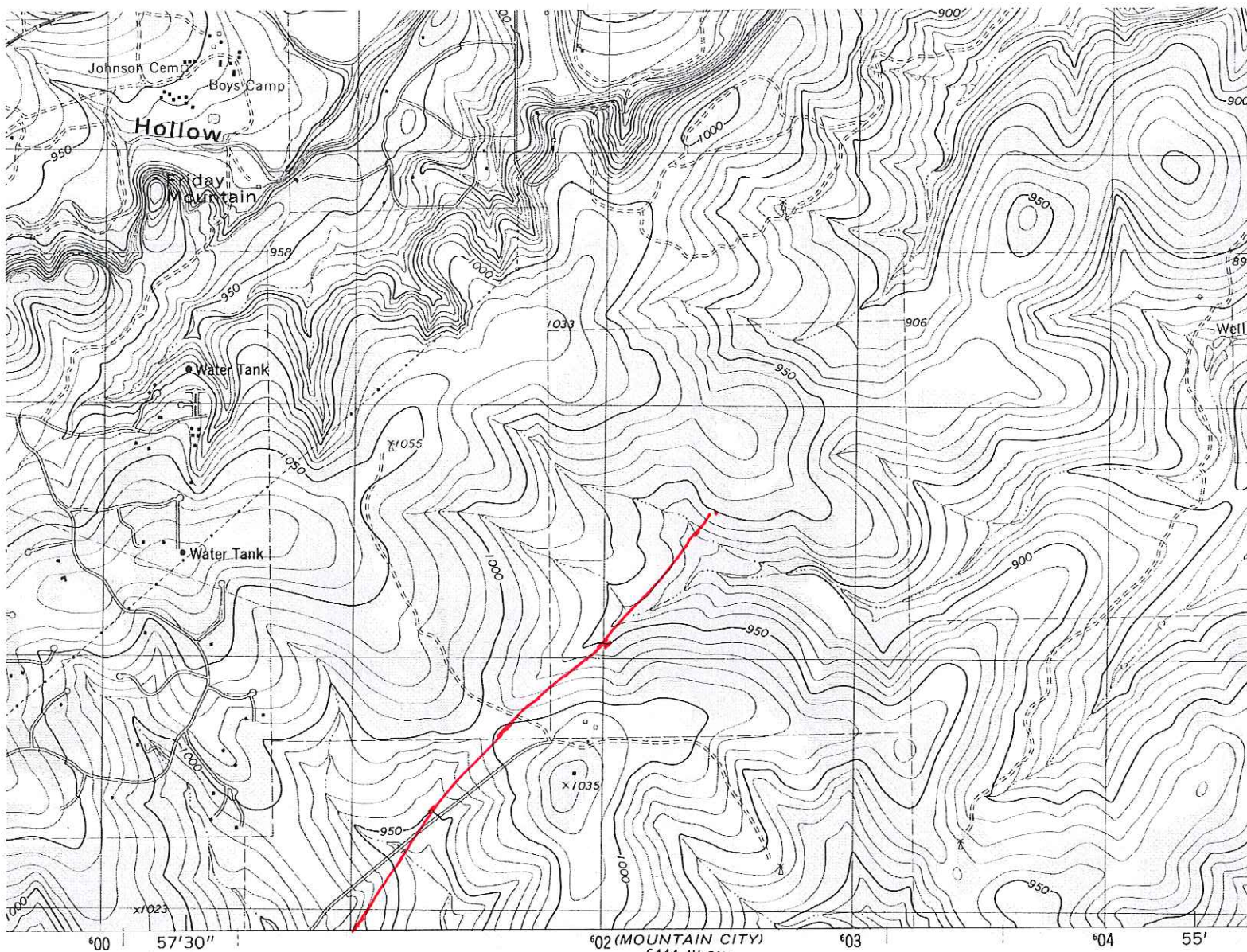
As always, please let me know if you have any questions.

Attachment A.

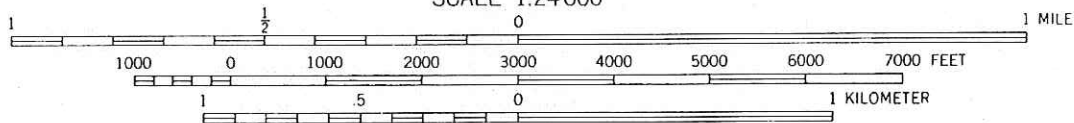
Updated Segments of Geologic Mapping of the Mountain City Quadrangle

Attachment A1.

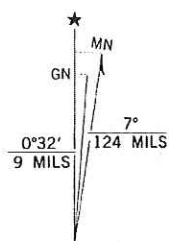
Tier 1



SCALE 1:24 000

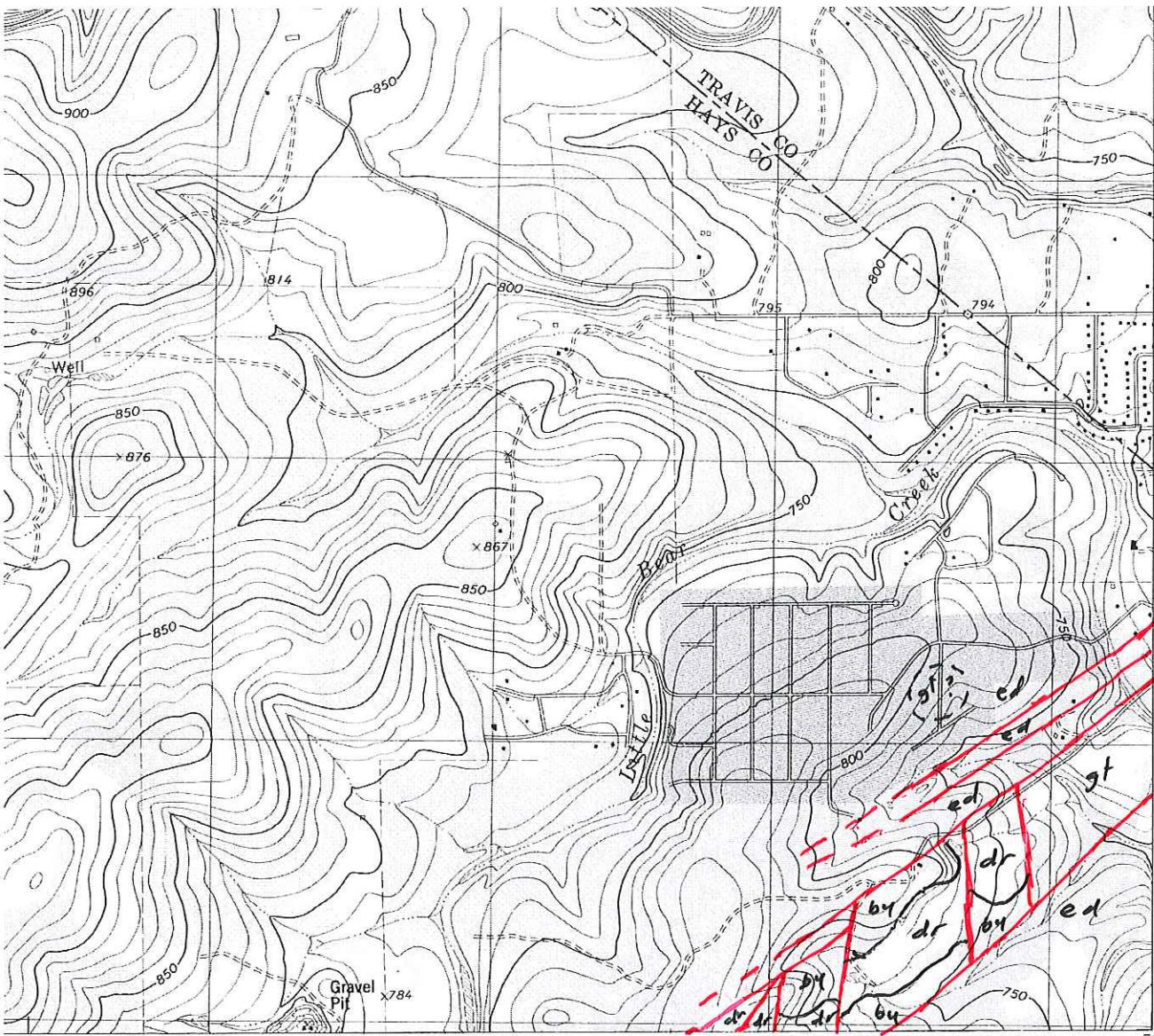


CONTOUR INTERVAL 10 FEET
NATIONAL GEODETIC VERTICAL DATUM OF 1929



AND 1986 MAGNETIC NORTH
TION AT CENTER OF MAP
RAM IS APPROXIMATE

THIS MAP COMPLIES WITH NATIONAL MAP ACCURACY STANDARDS
FOR SALE BY U. S. GEOLOGICAL SURVEY, DENVER, COLORADO 80225, OR RESTON, VIRGINIA 22092
A FOLDER DESCRIBING TOPOGRAPHIC MAPS AND SYMBOLS IS AVAILABLE ON REQUEST



3335

180 000 FEET
(CENTRAL)

334 000mN

30°07'30"
97°52'30"

(BUDA)
6444 III SE

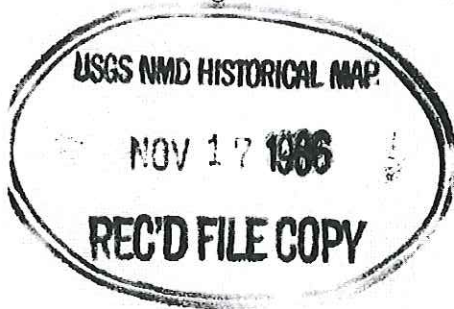
ROAD CLASSIFICATION

- | | |
|------------------------------------|--|
| Primary highway,
hard surface | Light-duty road, hard or
improved surface |
| Secondary highway,
hard surface | Unimproved road |
| Interstate Route | U. S. Route |
| | State Route |



QUADRANGLE LOCATION

3097-223



SIGNAL HILL, TEX.

NW/4 BUDA 15' QUADRANGLE
30097-B8-TF-024

1986

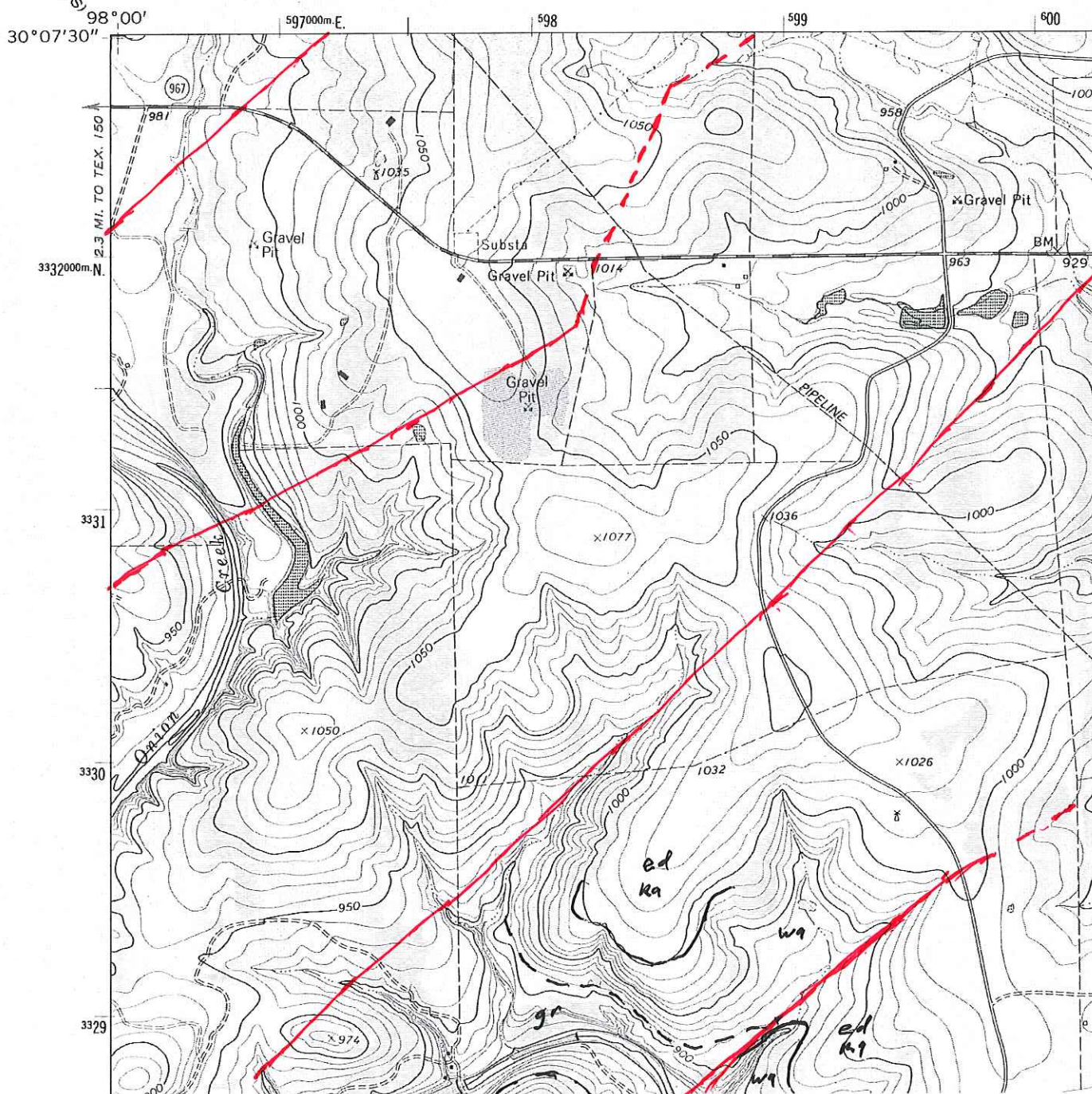
DMA 6444 III NW-SERIES V882

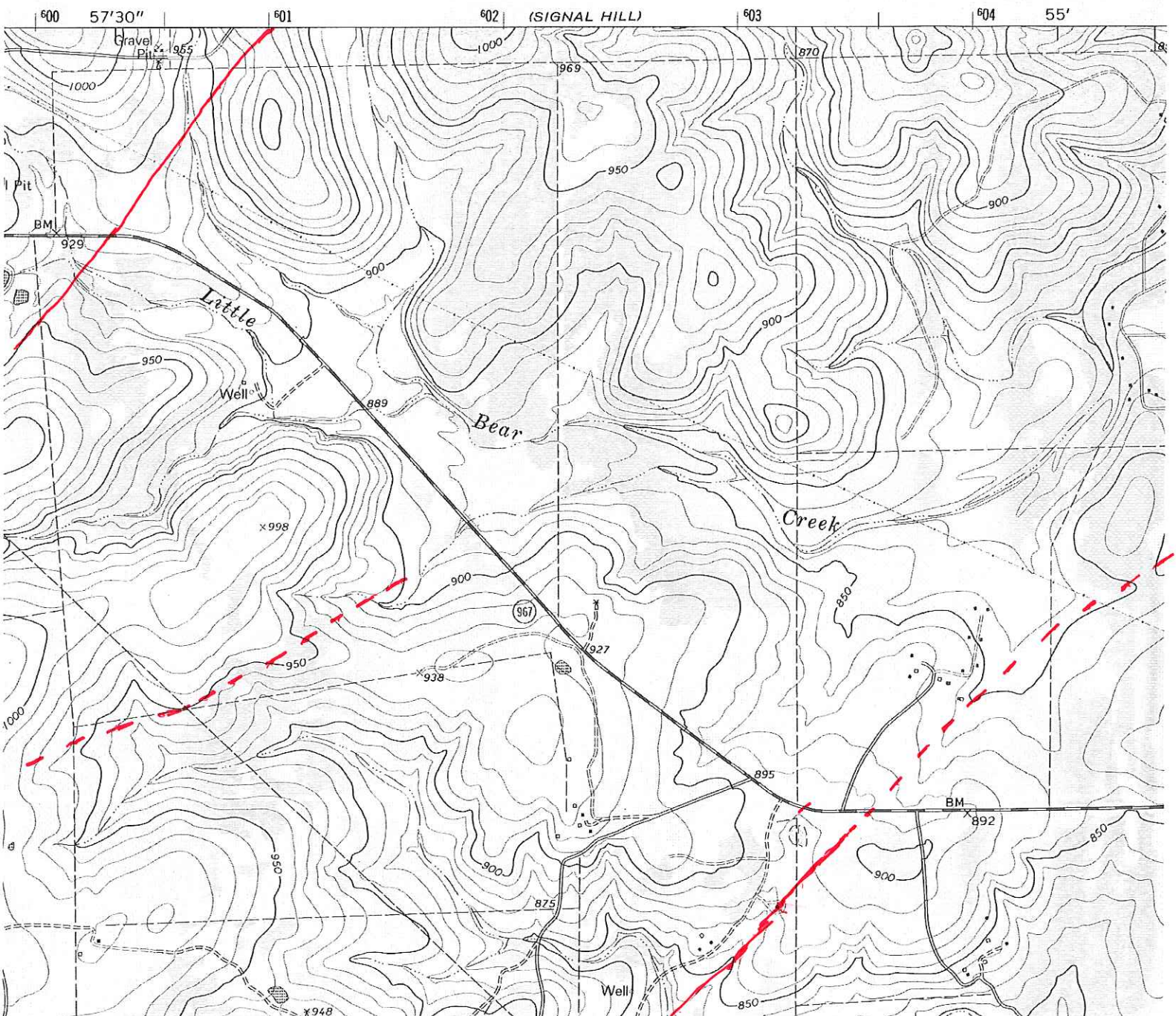
Attachment A2.

Tier 2

UNITED STATES
DEPARTMENT OF THE INTERIOR
GEOLOGICAL SURVEY

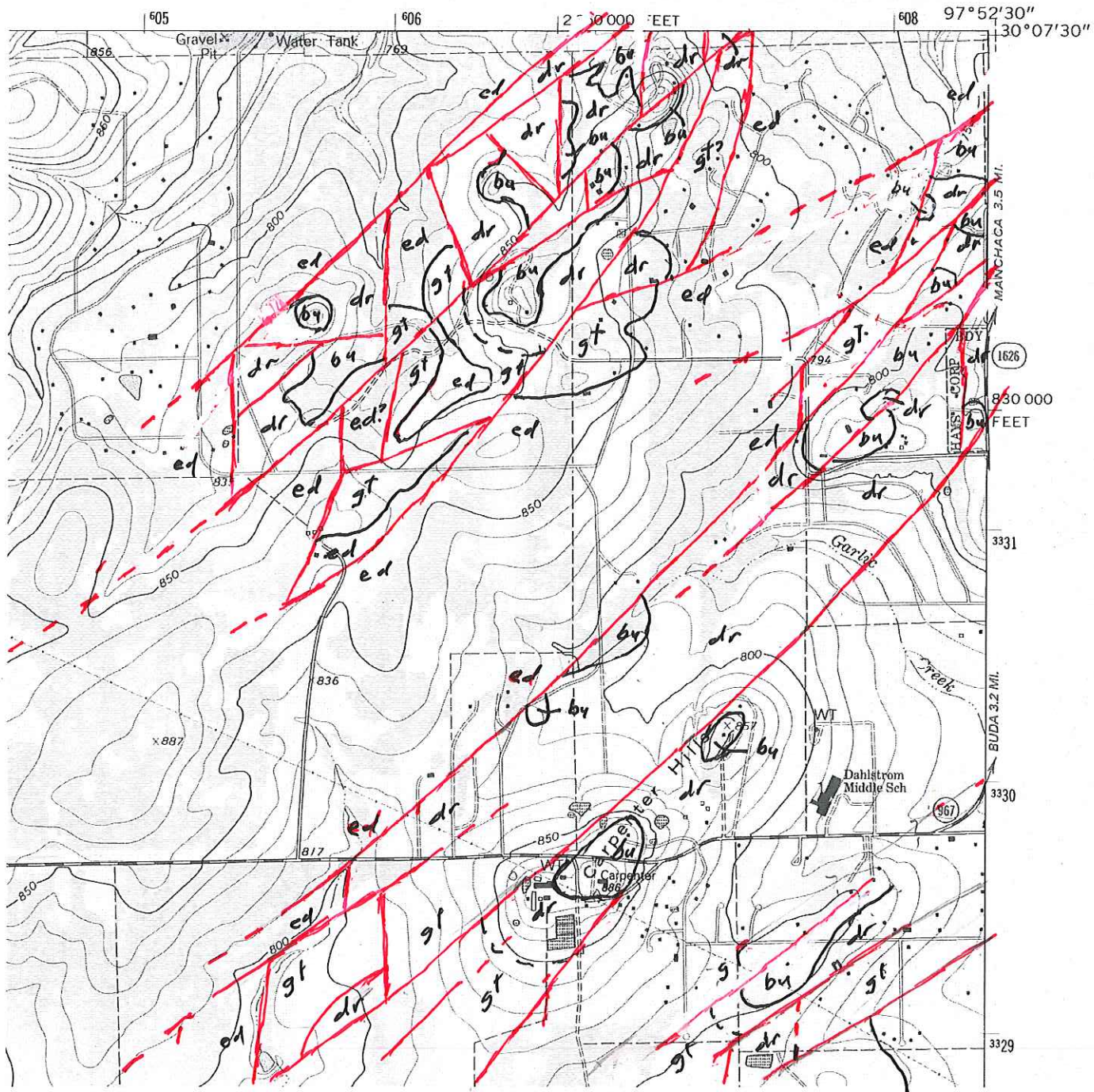
(DRIPPING SPRINGS)





MOUNTAIN CITY QUADRANGLE
TEXAS-HAYS CO.
7.5 MINUTE SERIES (TOPOGRAPHIC)

(OAK HILL)

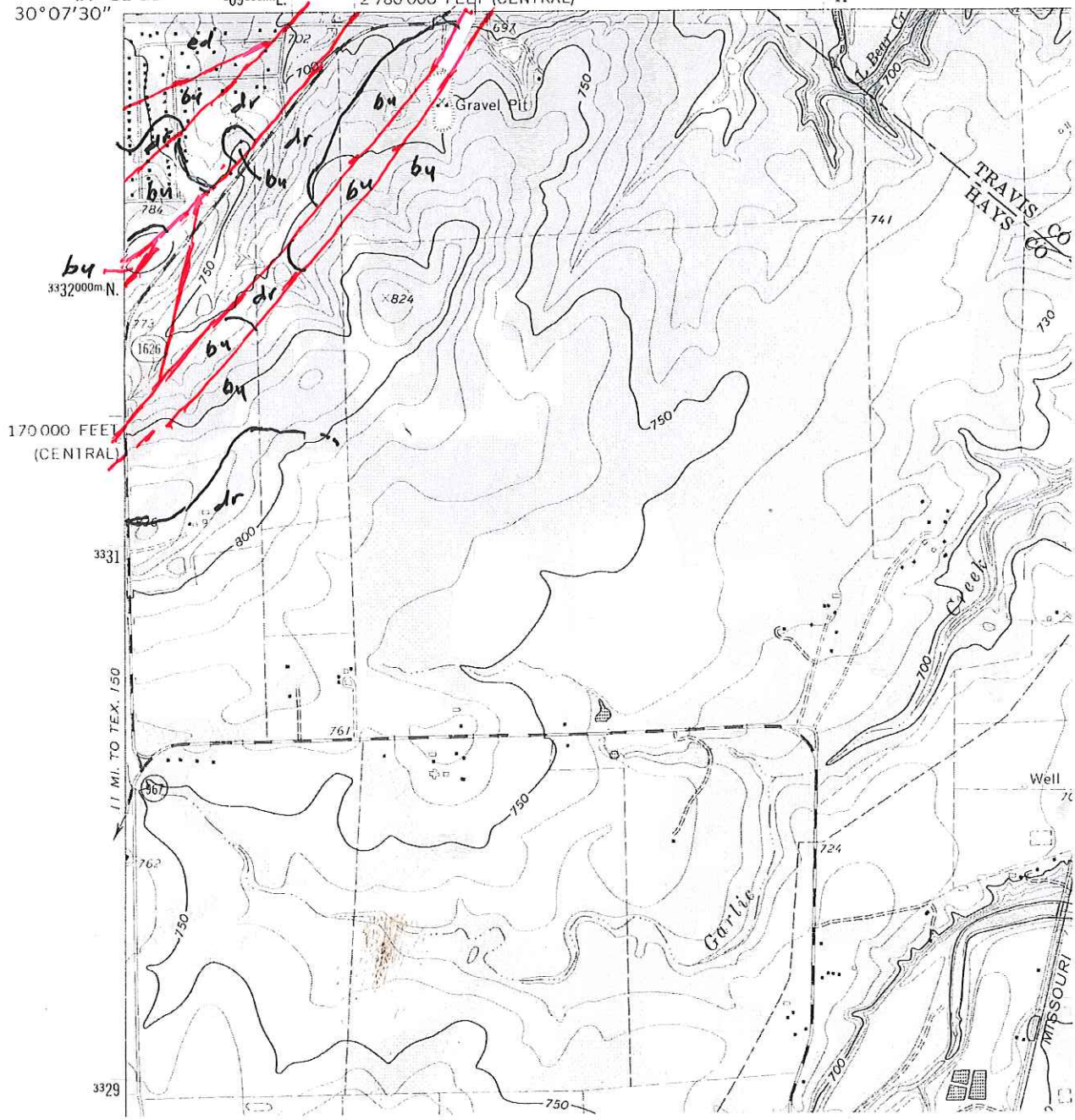


6442 11 NW
(SIGNAL HILL)

UNITED STATES
DEPARTMENT OF THE INTERIOR
GEOLOGICAL SURVEY

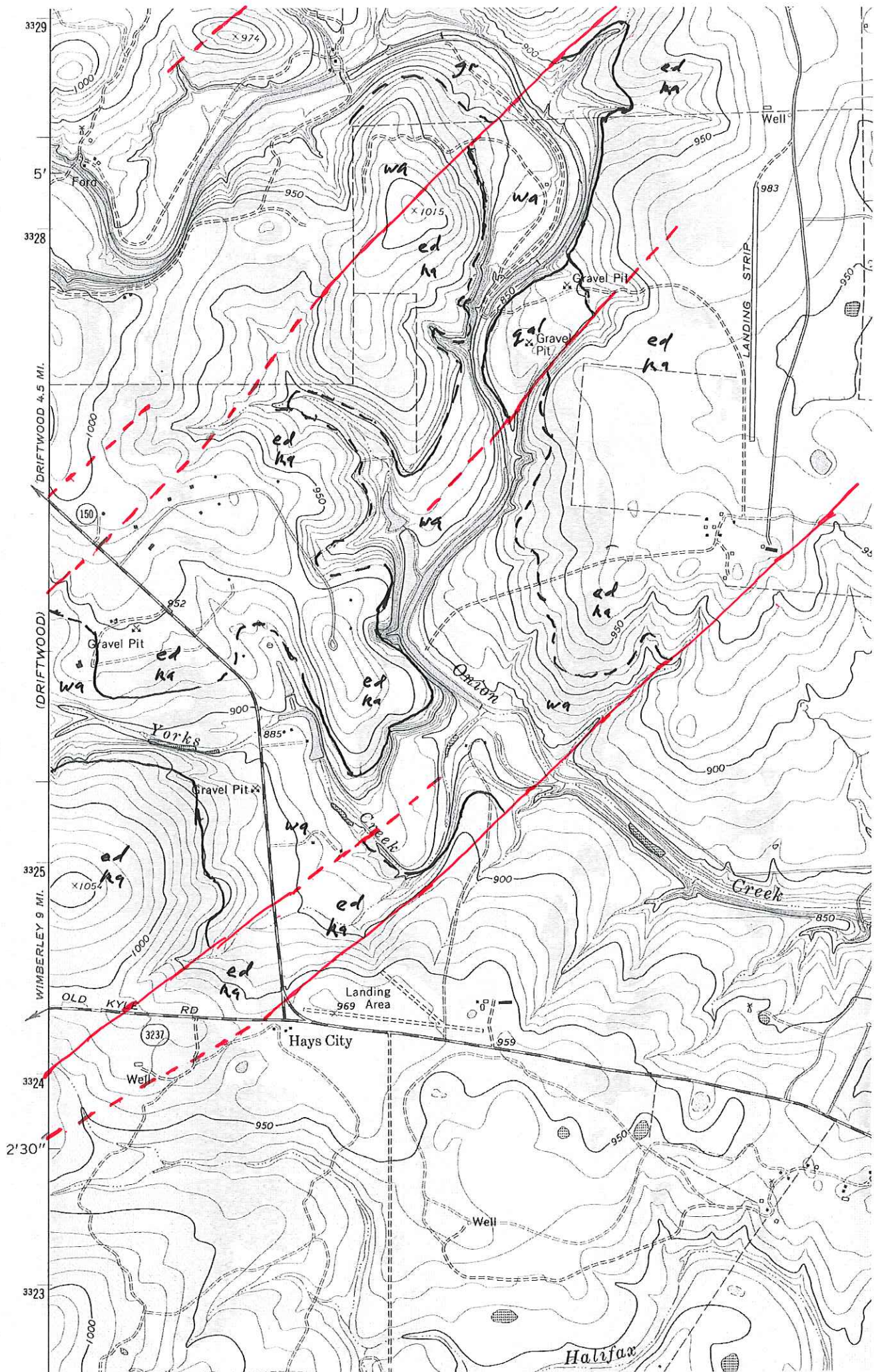
97°52'30" 609000m.E. 2 780 000 FEET (CENTRAL) MANCHACA 2.4 MI.

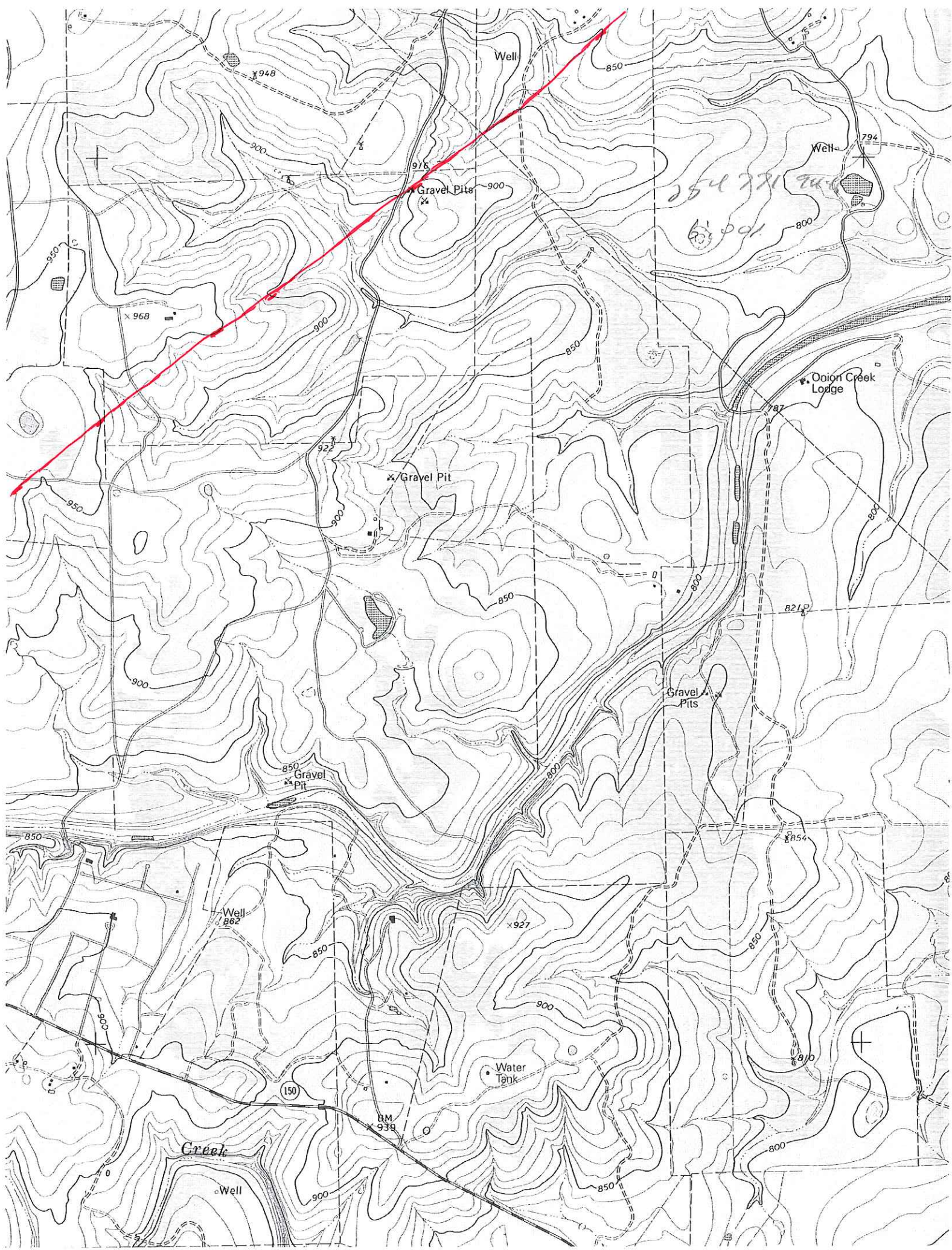
611

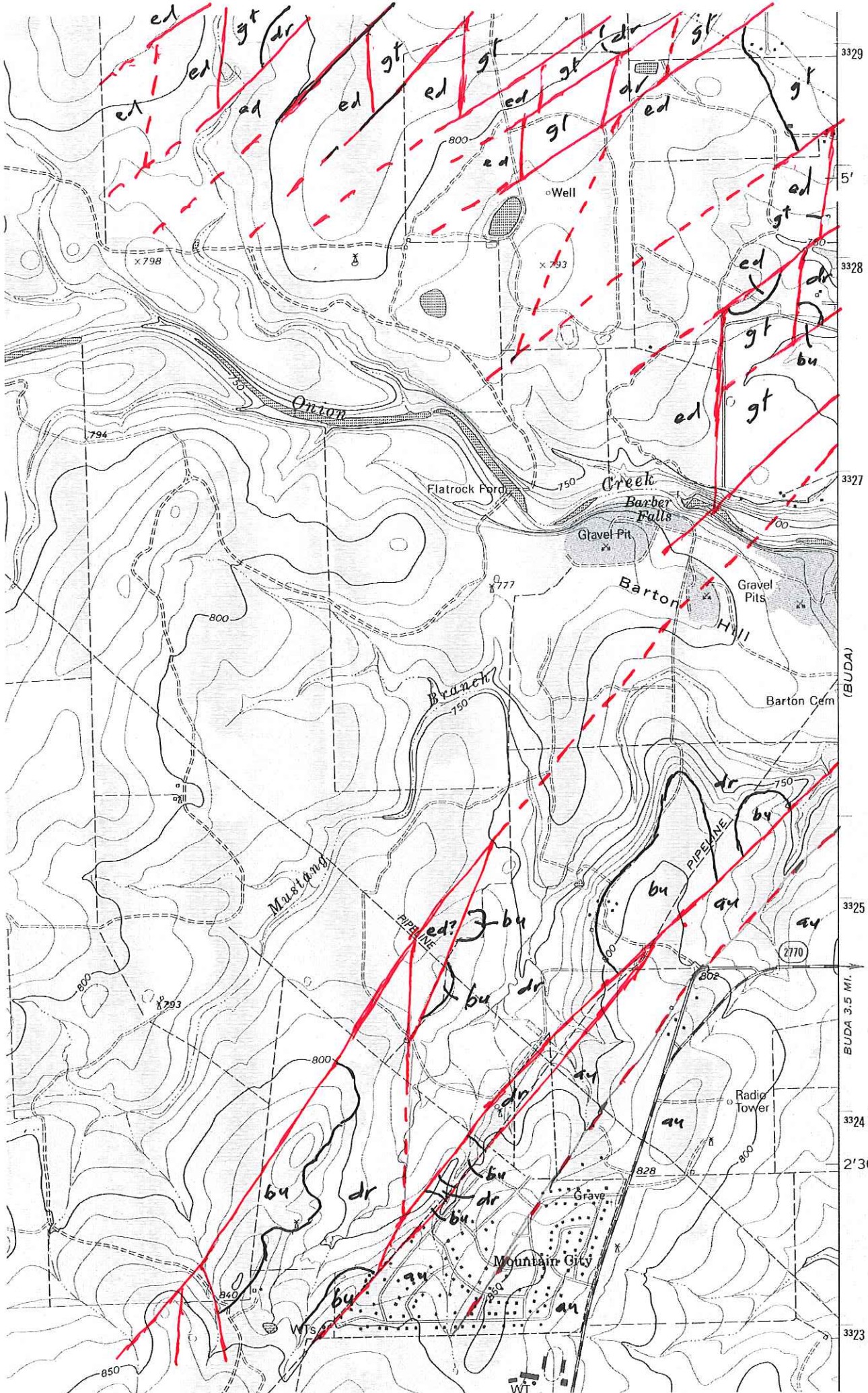


Attachment A3.

Tier 3



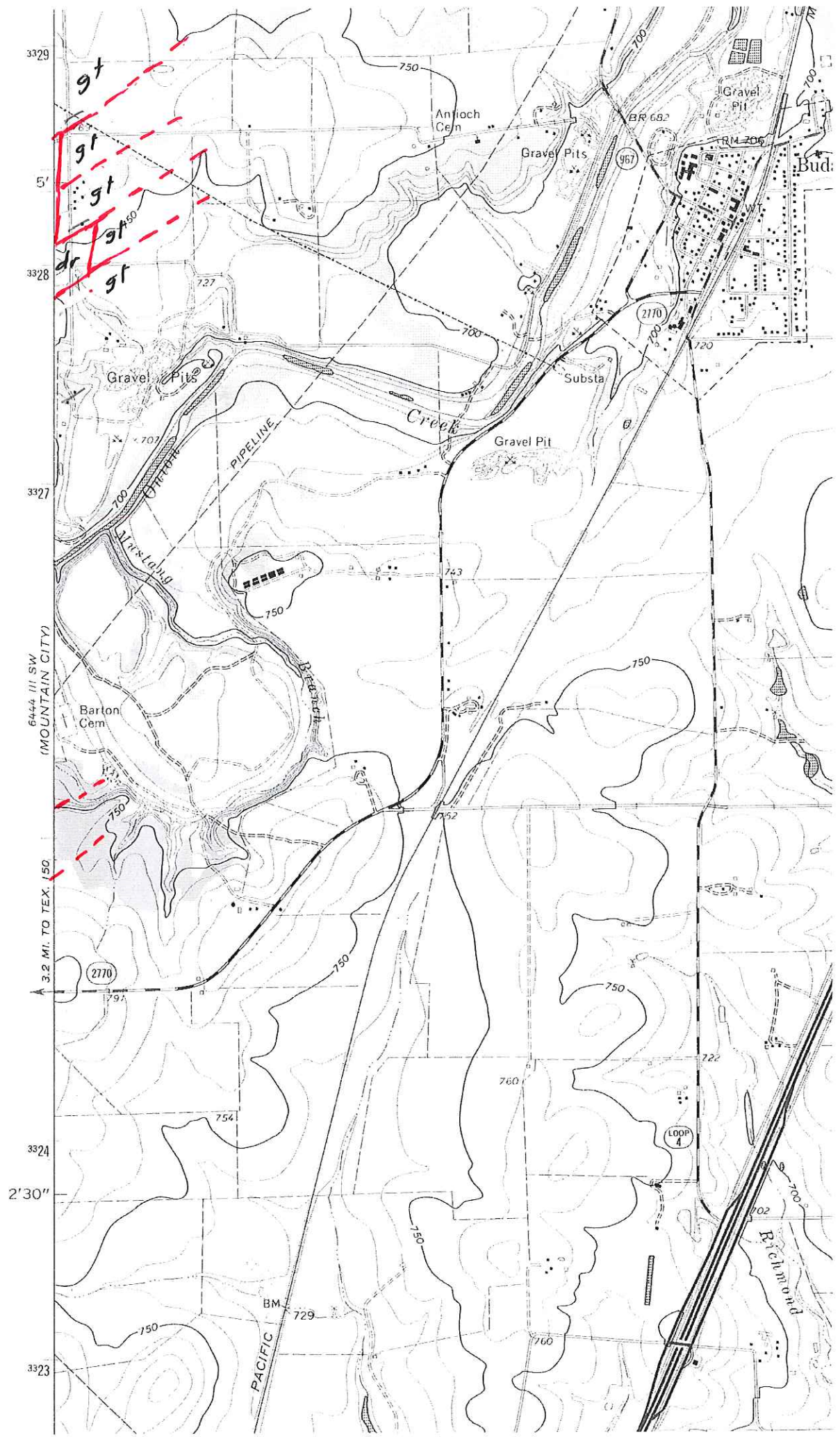




(BUDA)

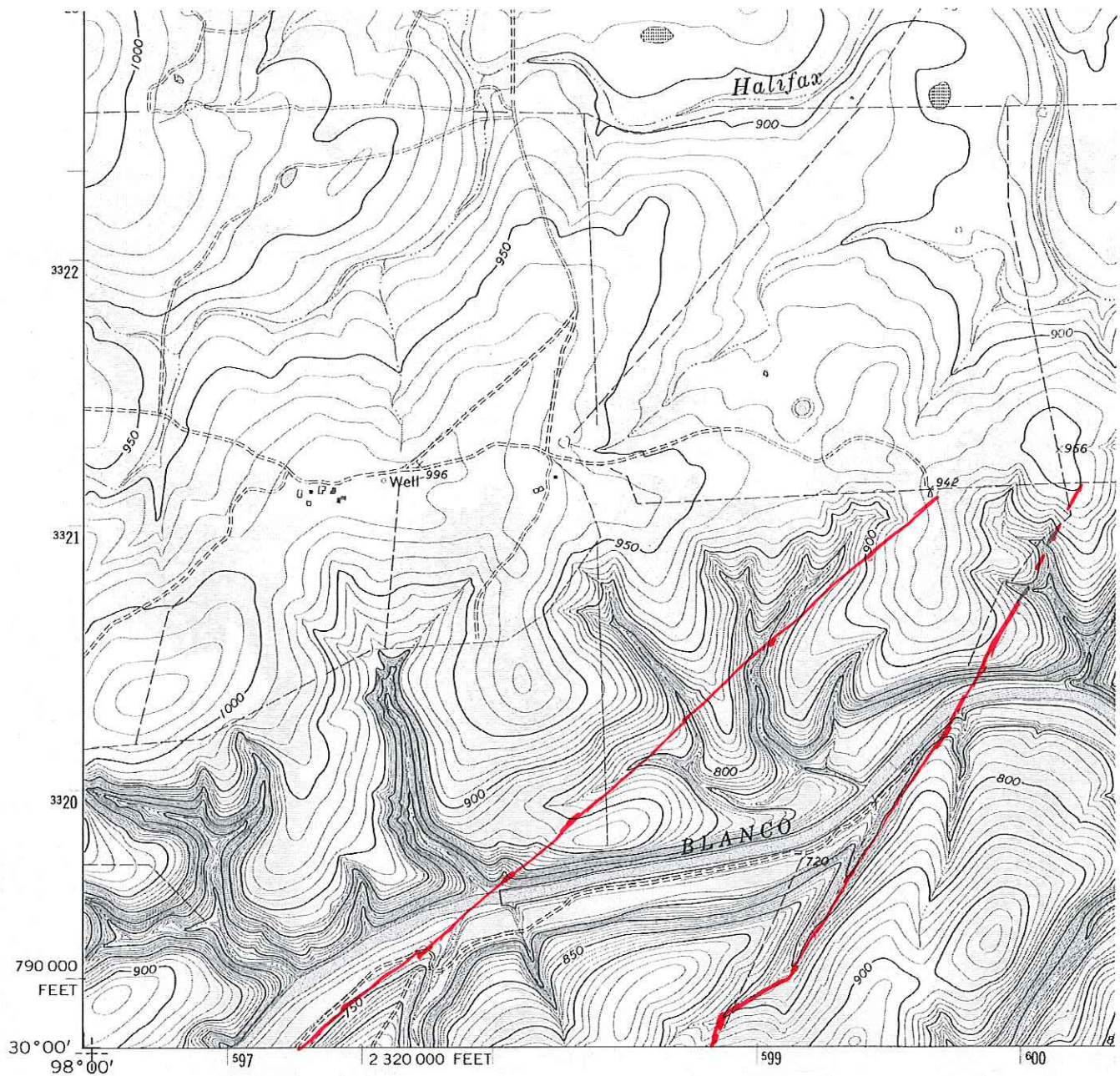
BUDA 3.5 MI.

2' 30"



Attachment A4.

Tier 4



(WIMBERLEY)

Produced by the United States Geological Survey

Control by USGS and NOS/NOAA

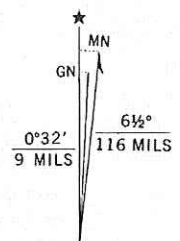
Compiled from aerial photographs taken 1967. Revisions shown in purple compiled from aerial photographs taken 1986 and other sources and have been field checked. Map edited 1994. Conflicts may exist between some updated features and previously mapped contours.

North American Datum of 1927 (NAD 27). Projection and 10 000-foot ticks: Texas Coordinate System, south central zone (Lambert Conformal Conic).

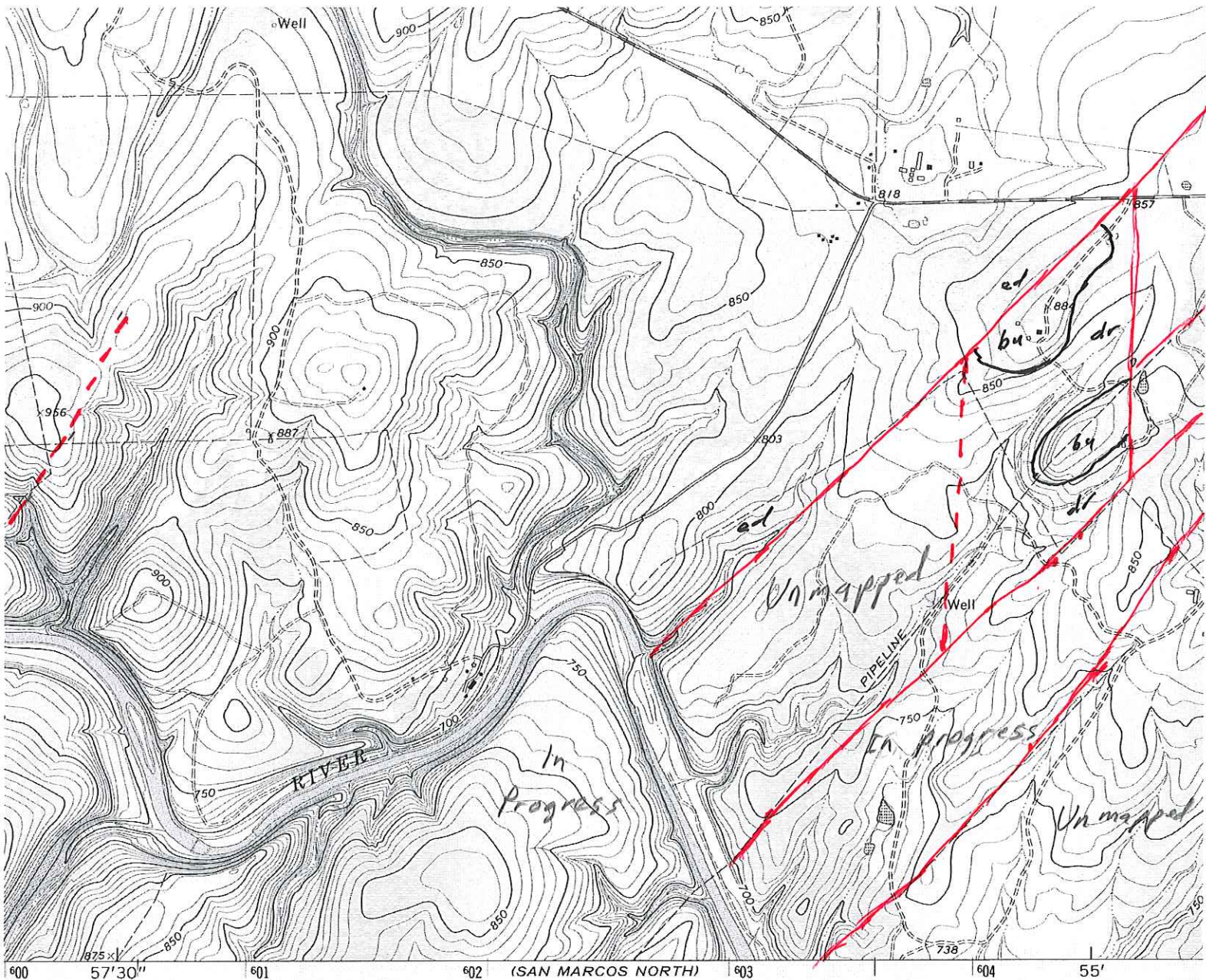
Blue 1000-meter Universal Transverse Mercator ticks, zone 14

North American Datum of 1983 (NAD 83) is shown by dashed corner ticks. The values of the shift between NAD 27 and NAD 83 for 7.5-minute intersections are obtainable from National Geodetic Survey NADCON software.

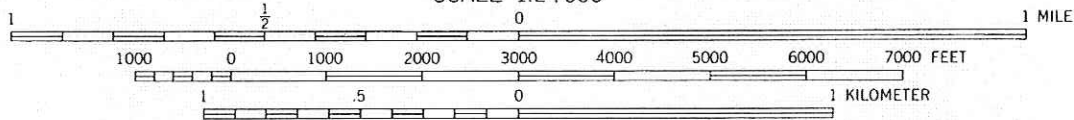
Areas covered by dashed light blue pattern are subject to controlled inundation.



UTM GRID AND 1994 MAGNETIC NORTH DECLINATION AT CENTER OF SHEET



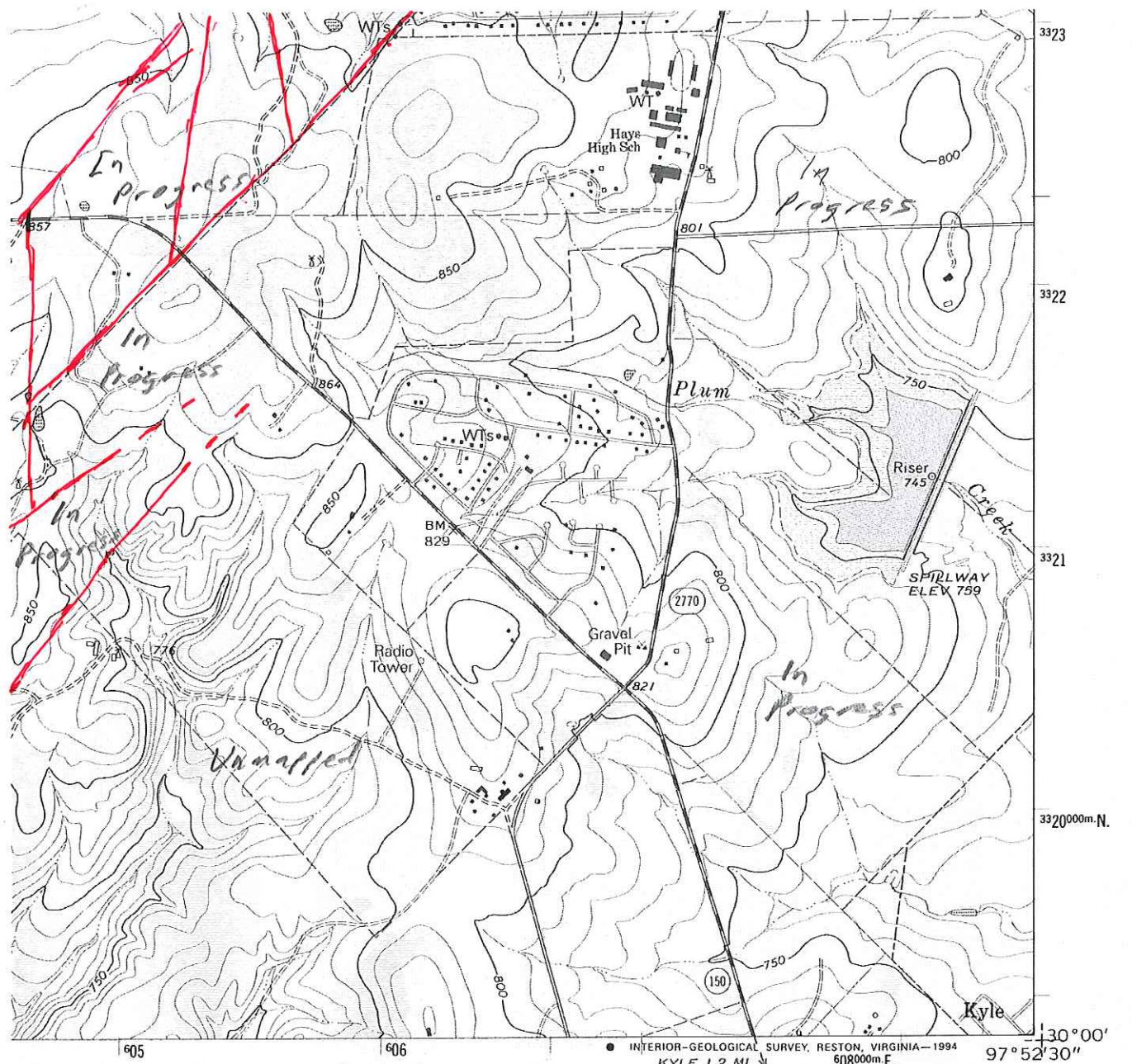
SCALE 1:24 000



CONTOUR INTERVAL 10 FEET
NATIONAL GEODETIC VERTICAL DATUM OF 1929

NORTH
UP

THIS MAP COMPLIES WITH NATIONAL MAP ACCURACY STANDARDS
FOR SALE BY U. S. GEOLOGICAL SURVEY, DENVER, COLORADO 80225, OR RESTON, VIRGINIA 22092
A FOLDER DESCRIBING TOPOGRAPHIC MAPS AND SYMBOLS IS AVAILABLE ON REQUEST



INTERIOR-GEOLOGICAL SURVEY, RESTON, VIRGINIA-1994
KYLE 1.2 MI. 608000m.E.

ROAD CLASSIFICATION

- | | |
|------------------------------------|--|
| Primary highway,
hard surface | Light-duty road, hard or
improved surface |
| Secondary highway,
hard surface | Unimproved road |
- Interstate Route
 U. S. Route
 State Route



3097-222



MOUNTAIN CITY, TEX.
30097-A8-TF-024

1968
REVISED 1994
DMA 6444 III SW-SERIES V882

(UPLAND)