

January 12, 2018

MEMORANDUM

To: Brian Hunt
From: Tom Grimshaw
Subject: BSEACD Observations in Centex Quarry, July 25, 2017

As part of our Mountain City Quadrangle mapping project, we have long planned on a field visit to the Centex Quarry, which is located just south of Onion Creek and west of FM 1626. On July 25, 2017, a visit was made to the quarry by you and others of the Barton Springs Edwards Aquifer Conservation District for the purpose of evaluating a cave on the quarry property.

One of the questions for our mapping project was whether any faults of the Balcones Fault Zone can be seen in the quarry walls. Three photos taken to the north and south are shown in Attachments A and B. The photo locations are shown on an image from Google Earth in Attachment C. The site of the cave is also depicted in Attachment C. Two views of the cave, one with you inside the cave, are shown in Attachments D and E.

These field examinations and photos show no signs of significant faults in the quarry walls, which is consistent with what we observed on the Sink Creek bluff just north of the quarry and on other bluffs upstream on the creek. These observations fulfill the need for a quarry visit for the Mountain City Quadrangle mapping project.

Please let me know if you have any questions.

Attachment A.



“Looking South from Bottom of Pit, Cave Near Tree”



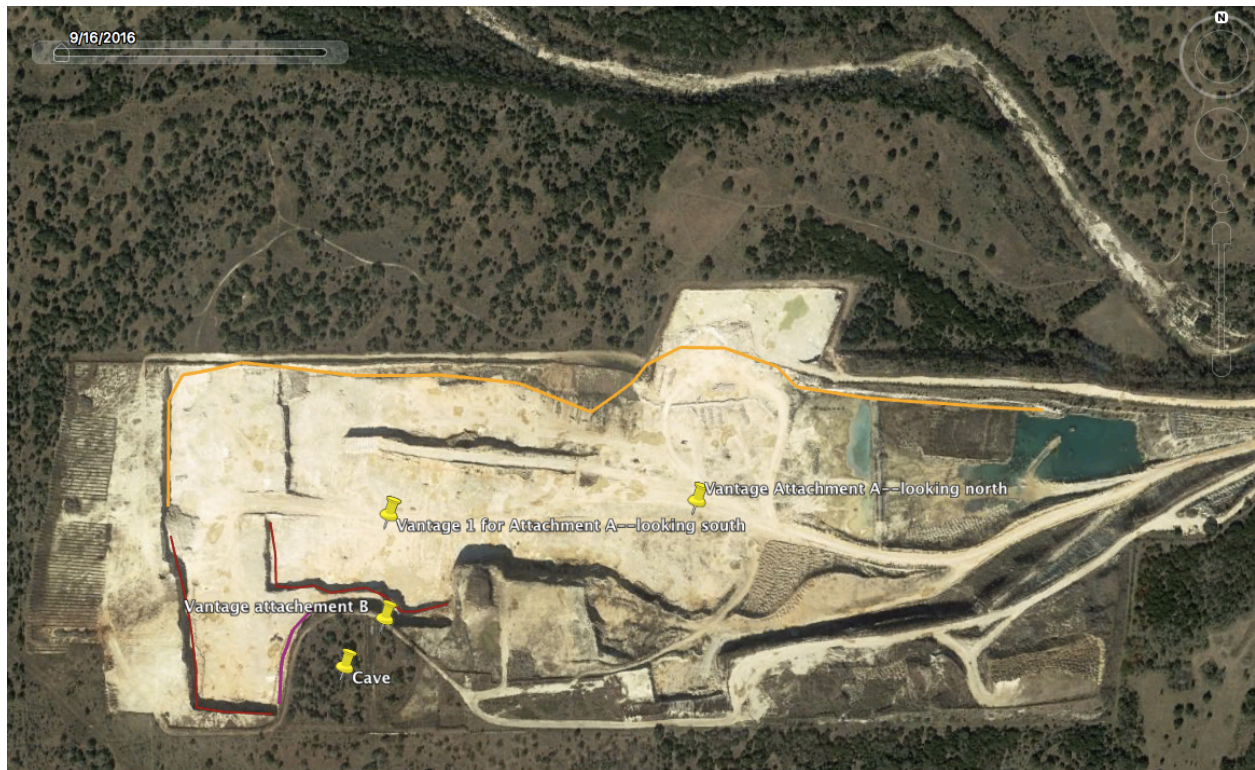
“Looking North from Bottom of Pit”

Attachment B.
“Looking North”



Attachment C.

Centex Quarry on Google Earth, Showing Photo Locations As Well as the Cave Location



Attachment D.

“Cave”



Attachment E.

“Cave Entrance Room”

